

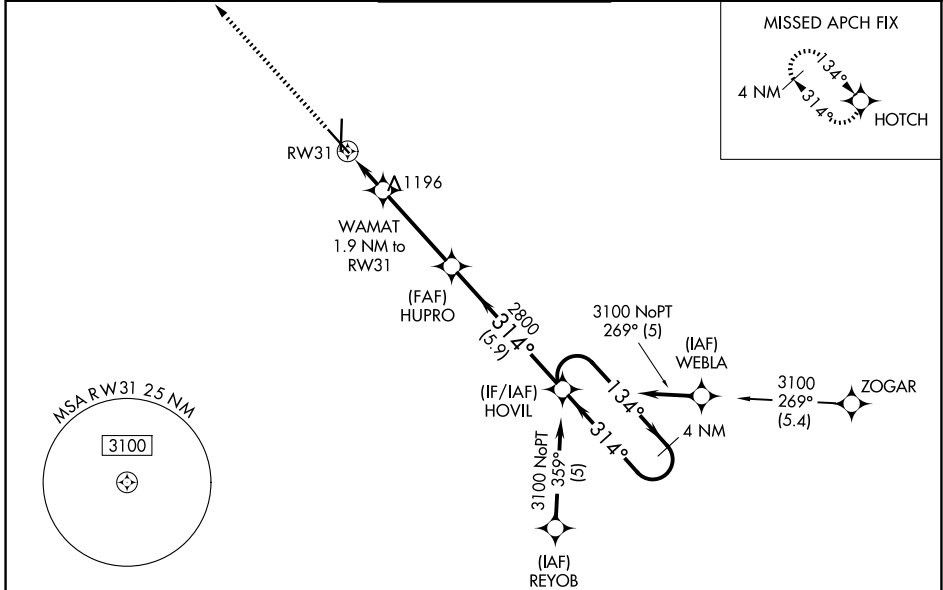
WAAS CH <b>69334</b> <b>W31A</b>	APP CRS <b>314°</b>	Rwy Ldg 5813 TDZE 978 Apt Elev 978
----------------------------------------	------------------------	---------------------------------------------------

# RNAV (GPS) RWY 31

JOPLIN RGNL (JLN)

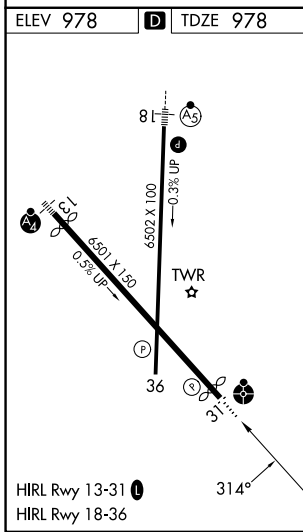
RNP APCH-GPS.	ODALS	MISSED APPROACH: Climb to 3100 direct HOTCH and hold.
<p><b>T</b> For uncompensated Baro-VNAV systems, LNAV/VNAV NA below -16°C or above 54°C. Inoperative table does not apply. Rwy 31 helicopter visibility reduction below ¾ SM NA.</p>		

ATIS <b>120.85</b>	KANSAS CITY CENTER <b>128.6 282.325</b>	JOPLIN TOWER* <b>119.8 (CTAF) 0</b>	GND CON <b>121.6</b>	UNICOM <b>122.95</b>
-----------------------	--------------------------------------------	----------------------------------------	-------------------------	-------------------------



NC-3, 14 MAY 2026 to 11 JUN 2026

NC-3, 14 MAY 2026 to 11 JUN 2026



ELEV 978	<b>D</b>	TDZE 978		
3100	HOTCH			
* LNAV only.				
WAMAT 1.9 NM to RWY 31	HUPRO 2800	HOVIL 4 NM Holding Pattern		
1620*	314°	3100		
1.9 NM	3.7 NM	5.9 NM		
GP 3.00°	TCH 47			
CATEGORY	A	B	C	D
LPV DA	1229-¾		251 (300-¾)	
LNAV/VNAV DA	1357-1¼		379 (400-1½)	
LNAV MDA	1500-1	522 (600-1)	1500-1½	522 (600-1½)
CIRCLING	1500-1	522 (600-1)	1540-1½ 562 (600-1½)	1600-2 622 (700-2)