

WAAS CH 86213 W18A	APP CRS 182°	Rwy Ldg 7094 TDZE 2130 Apt Elev 2132
--	------------------------	---

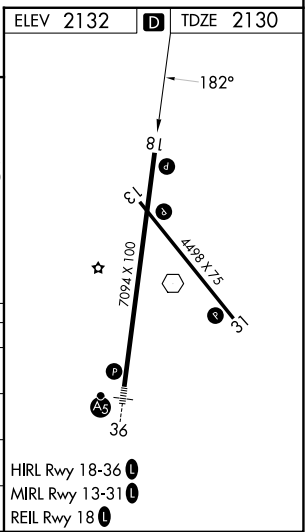
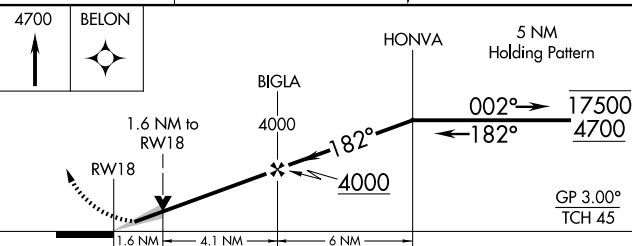
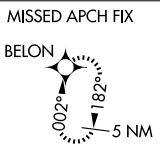
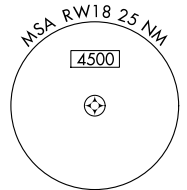
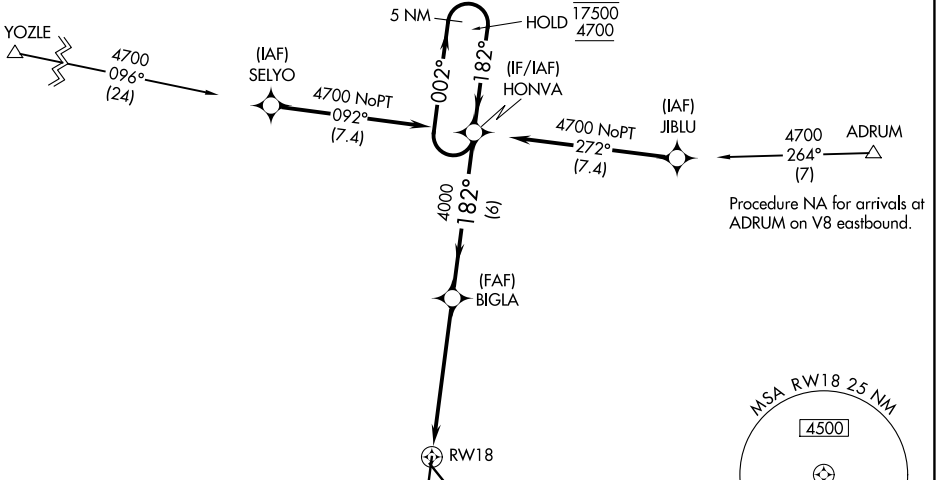
RNAV (GPS) RWY 18

KEARNEY RGNL (E.A.R.)

RNP APCH - GPS.	MISSED APPROACH: Climb to 4700 direct BELON and hold.
<p>▼ For uncompensated Baro-VNAV systems, LNAV/VNAV NA below -23°C or above 54°C.</p> <p>▲</p>	

AWOS-3PT 123.875	MINNEAPOLIS CENTER 119.4 278.8	UNICOM 123.0 (CTAF) ①
----------------------------	--	---------------------------------

Procedure NA for arrivals at YOZLE on V6 westbound.



CATEGORY	A	B	C	D
LPV DA		2330-3/4	200 (200-3/4)	
LNAV/VNAV DA		2393-7/8	263 (300-7/8)	
LNAV MDA	2680-1	550 (600-1)	2680-1 5/8	550 (600-1 5/8)
CIRCLING	2680-1	548 (600-1)	2680-1 5/8	2840-2 1/4
			548 (600-1 5/8)	708 (800-2 1/4)

NC-2, 14 MAY 2026 to 11 JUN 2026

NC-2, 14 MAY 2026 to 11 JUN 2026