

APP CRS **270°**  
 Rwy ldg **5005**  
 TDZE **956**  
 Apt Elev **983**

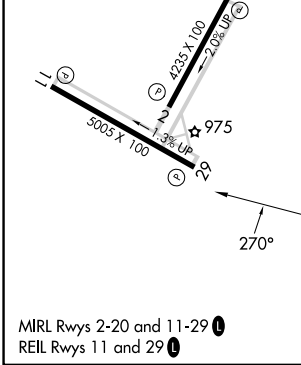
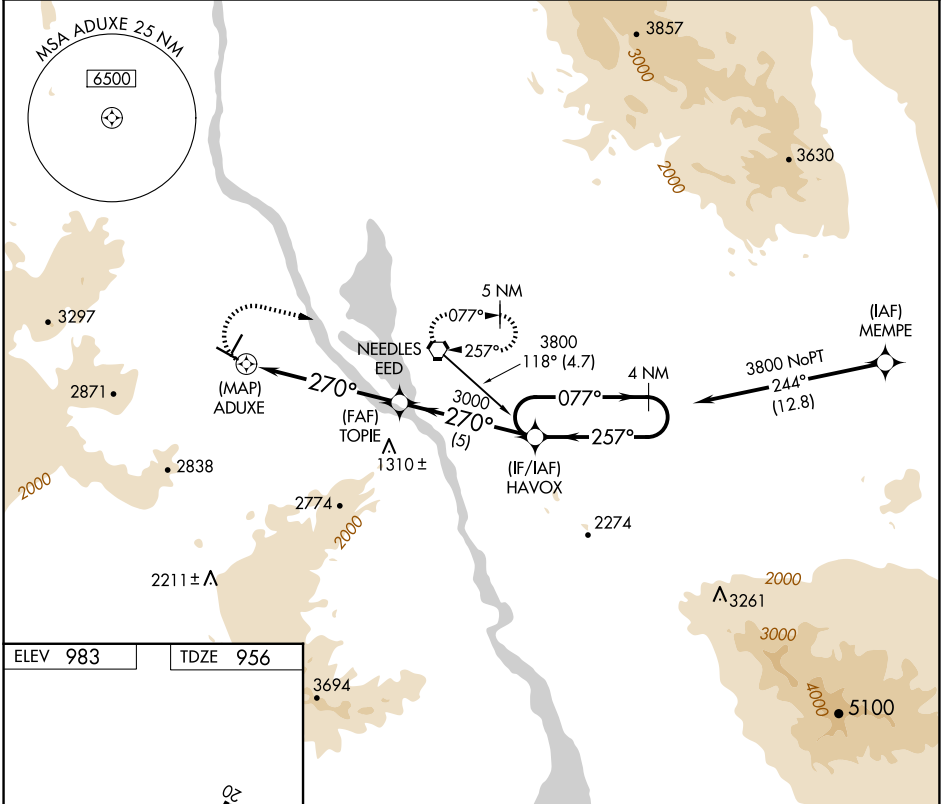
# RNAV (GPS) RWY 29

NEEDLES (EED)

⚠ Straight-in minimums not authorized at night.  
 GPS or RNP-0.3 required. DME/DME RNP-0.3 NA.  
 Circling NA for Cats C and D south of Rwy 11-29.

⚠ MISSED APPROACH: Climbing right turn to 6000 direct to EED  
 VORTAC and hold.

ASOS <b>128.325</b>	LOS ANGELES CENTER <b>134.65 360.65</b>	UNICOM <b>123.0 (CTAF) ①</b>
------------------------	--	---------------------------------



6000	EED	VGSIs and descent angle not coincident (VGSIs Angle 3.00/TCH 40).	
		TOPIE	HAVOX 4 NM Holding Pattern
		ADUXE	3800
		0.6 NM to ADUXE	077°
		3.20° TCH 45	← 257°
		5 NM	5 NM
CATEGORY	A	B	C
LNAV MDA	1300-1 344 (400-1)		1300-1¼ 344 (400-1¼)
CIRCLING	1560-1	1680-1	1680-2
	577 (600-1)	697 (700-1)	697 (700-2)
			1960-3 977 (1000-3)

SW-3, 14 MAY 2026 to 11 JUN 2026

SW-3, 14 MAY 2026 to 11 JUN 2026