

HI-ILS or LOC Z RWY 31

LOC I-OFF 109.5	APCH CRS 307°	Rwy ldg 10,612 TDZE 991 Arprt Elev 1048	[USAF]	OFFUTT AFB (KOFF)
---------------------------	-------------------------	--	--------	-------------------

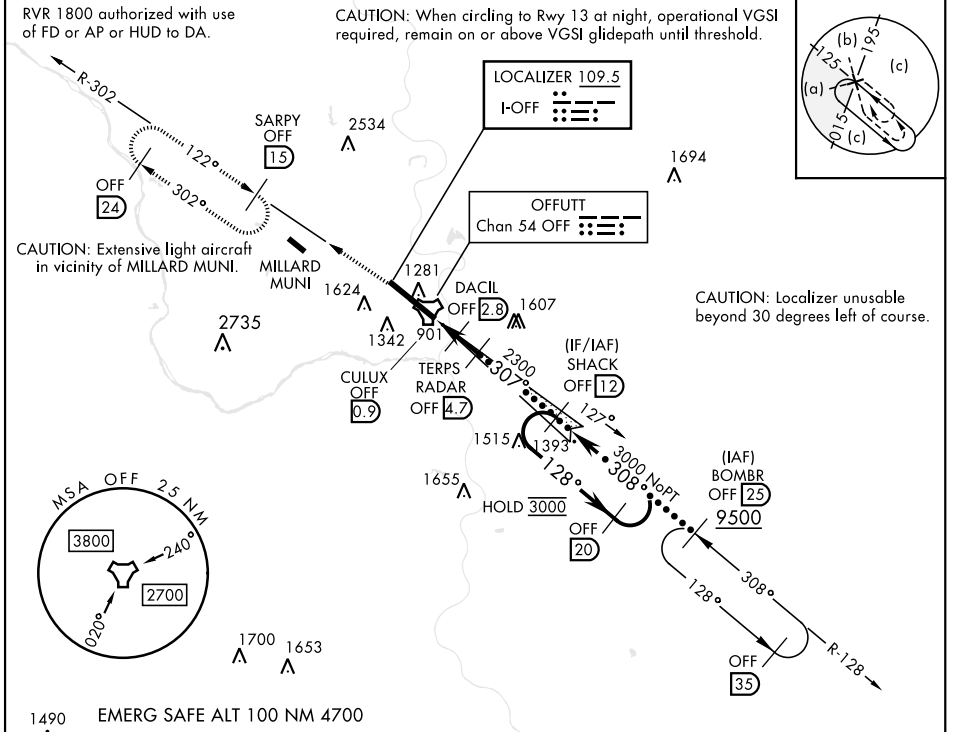
RADAR or DME required

▼ * When ALS inop, increase CAT CDE RVR to 40 and vis to 3/4 mile.
 ** When ALS inop, increase CAT CDE RVR to 55 and vis to 1 mile.
 *** Circling not authorized N of Rwy 13-31.

ALSF-1 (A1)

MISSED APPROACH: Climb to 3000 via OFF TACAN R-302 to SARPY and hold.

ATIS 126.025 273.5	OMAHA APP CON 124.5 263.0 (E) 135.875 354.05 (W)	TOWER 123.7 279.625	GND CON 121.7 289.4
------------------------------	--	-------------------------------	-------------------------------



3000 OFF R-302	SARPY OFF (15)	SHACK OFF (12)	OFF (20)
OFF TACAN	CULUX OFF (0.9)	DACIL OFF (2.8) RADAR	TERPS OFF (4.7)
1720	2300	3000	3000
0.5	1.9 NM	1.9 NM	
CATEGORY	C	D	E
S-ILS 31*	1192/24	200	(200-1/2)
S-LOC 31**	1360/35	368	(400-3/4)
CIRCLING ***	1660-13/4 612 (700-13/4)	1940-3	892 (900-3)

ELEV 1048 TDZE 991

Rwy 13 ldg 10,695'
Rwy 31 ldg 10,612'

GS 2.80° TCH 58

HIRL Rwy 13-31
Rwy 13-31 ALS nstd

FAF to MAP 3.8 NM

Knots	120	140	160	180	200
Min:Sec	1:54	1:38	1:26	1:16	1:08

HI-ILS or LOC Z RWY 31

NC-2, 14 MAY 2026 to 11 JUN 2026

NC-2, 14 MAY 2026 to 11 JUN 2026