

# HI-TACAN Z RWY 13

TACAN OFF Chan <b>54</b>	APCH CRS <b>122°</b>	Rwy ldg <b>10,695</b> TDZE <b>1048</b> Arpt Elev <b>1048</b>
-----------------------------	-------------------------	--

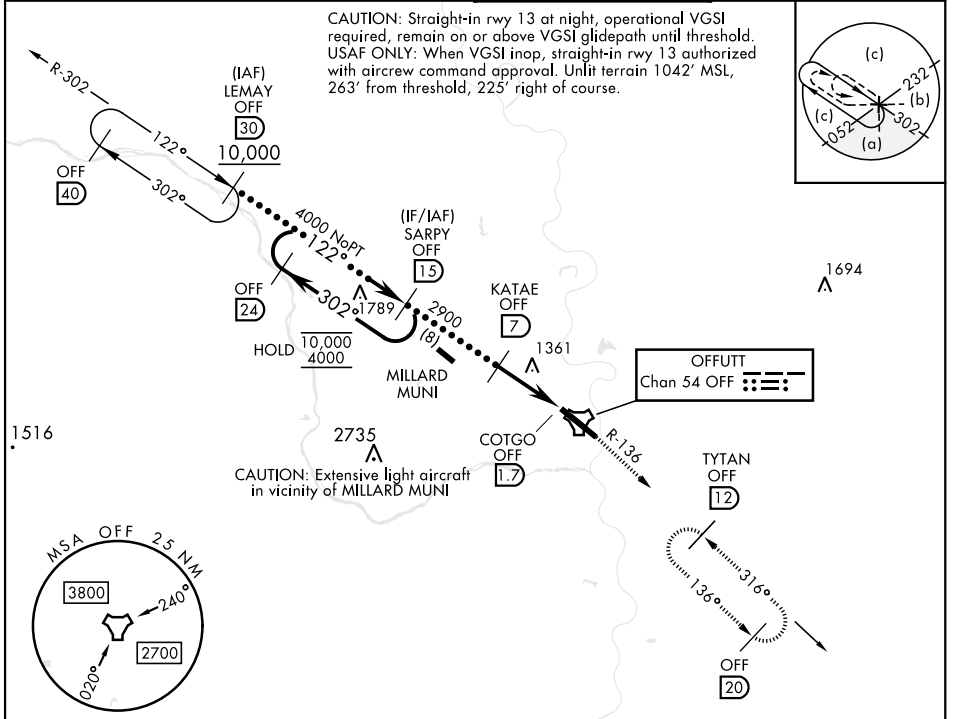
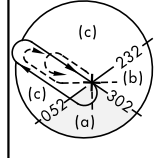
[USAF]

OFFUTT AFB (KOFF)

<p><b>▼</b> * When ALS inop, increase vis to 1½ miles. ** Circling not authorized N of Rwy 13-31.</p>	<p>ALSIF-1 <b>(A1)</b></p>	<p>MISSED APPROACH: Climb to 3000 via OFF TACAN R-136 to TYTAN and hold.</p>
---	--------------------------------	--

<p>ATIS <b>126.025 273.5</b></p>	<p>OMAHA APP CON <b>124.5 263.0 (E)</b> <b>135.875 354.05 (W)</b></p>	<p>TOWER <b>123.7 279.625</b></p>	<p>GND CON <b>121.7 289.4</b></p>
--------------------------------------	---	---------------------------------------	---------------------------------------

CAUTION: Straight-in rwy 13 at night, operational VGSi required, remain on or above VGSi glidepath until threshold. USAF ONLY: When VGSi inop, straight-in rwy 13 authorized with aircrew command approval. Unlit terrain 1042' MSL, 263' from threshold, 225' right of course.



EMERG SAFE ALT 100 NM 4700

<p>VGSi and descent angles not coincident (VGSi Angle 3.00/TCH 55).</p>			<p>3000 OFF R-136</p>	<p>TYTAN OFF 12</p>	
CATEGORY	C	D	E		
S-13 *	1620-1¼	572	(600-1¼)		
<b>C</b> CIRCLING**	1660-1¼ 612 (700-1¼)	1940-3	892	(900-3)	
<p>OMAHA, NEBRASKA</p>			<p>OFFUTT AFB (KOFF)</p>		

# HI-TACAN Z RWY 13

NC-2, 14 MAY 2026 to 11 JUN 2026

NC-2, 14 MAY 2026 to 11 JUN 2026