

# HI-TACAN Z RWY 31

TACAN OFF Chan <b>54</b>	APCH CRS <b>316°</b>	Rwy ldg <b>10,612</b> TDZE <b>991</b> Arprt Elev <b>1048</b>
-----------------------------	-------------------------	--

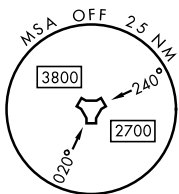
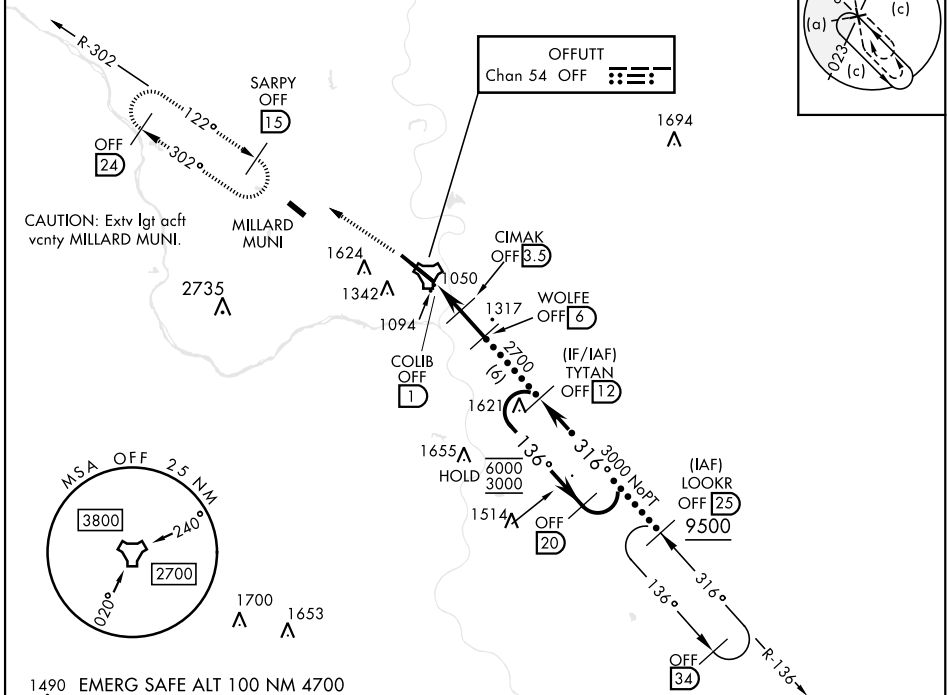
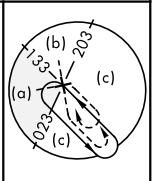
[USAF]

OFFUTT AFB (KOFF)

<p>▼ *When ALS inop, increase CAT CDE RVR to 55, vis to 1 mile. **Circling not authorized N of Rwy 13-31.</p>	<p>ALSF-1 </p>	<p>MISSED APPROACH: Climb to 3000 via OFF TACAN R-302 to SARPY and hold.</p>
---	--------------------	--

<p>ATIS <b>126.025 273.5</b></p>	<p>OMAHA APP CON <b>124.5 263.0</b> (E) <b>135.875 354.05</b> (W)</p>	<p>TOWER <b>123.7 279.625</b></p>	<p>GND CON <b>121.7 289.4</b></p>
--------------------------------------	---	---------------------------------------	---------------------------------------

CAUTION: When circling to Rwy 13 at night, operational VGSI required, remain on or above VGSI glidepath until threshold.



1490 EMERG SAFE ALT 100 NM 4700

<p>3000 OFF R-302</p> <p>SARPY OFF 15</p>	<p>TYTAN OFF 12</p> <p>OFF 20</p>	<p>ELEV 1048</p> <p>TDZE 991</p> <p>Rwy 13 ldg 10,695' Rwy 31 ldg 10,612'</p>												
<p>OFF TACAN</p> <p>COLIB OFF 1</p> <p>CIMAK OFF 3.5</p> <p>WOLFE OFF 6</p> <p>2700</p> <p>1940</p> <p>2.82° TCH 56</p> <p>0.6 2.5 NM 2.5 NM</p>	<p>6000 3000</p> <p>133°</p> <p>316°</p> <p>316°</p>	<p></p>												
<table border="1"> <tr> <th>CATEGORY</th> <th>C</th> <th>D</th> <th>E</th> </tr> <tr> <td>S-31*</td> <td>1360/40</td> <td>368</td> <td>(400-¾)</td> </tr> <tr> <td>CIRCLING**</td> <td>1660-¾ 612 (700-1¾)</td> <td>1940-3</td> <td>892 (900-3)</td> </tr> </table>	CATEGORY	C	D	E	S-31*	1360/40	368	(400-¾)	CIRCLING**	1660-¾ 612 (700-1¾)	1940-3	892 (900-3)	<p>HIRL Rwy 13-31 Rwy 13-31 ALS nstd</p>	
CATEGORY	C	D	E											
S-31*	1360/40	368	(400-¾)											
CIRCLING**	1660-¾ 612 (700-1¾)	1940-3	892 (900-3)											

# HI-TACAN Z RWY 31

NC-2, 14 MAY 2026 to 11 JUN 2026

NC-2, 14 MAY 2026 to 11 JUN 2026