

OMAHA, NEBRASKA

# ILS or LOC Y RWY 31

LOC I-OFF <b>109.5</b>	APCH CRS <b>307°</b>	Rwy Idg <b>10,612</b> TDZE <b>991</b> Arprt Elev <b>1048</b>	[USAF]	OFFUTT AFB (KOFF)
---------------------------	-------------------------	--	--------	-------------------

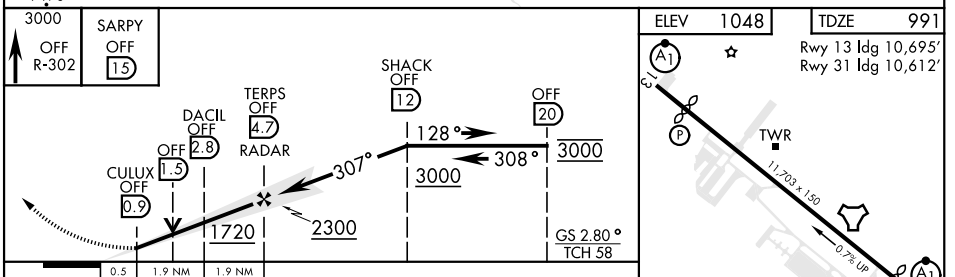
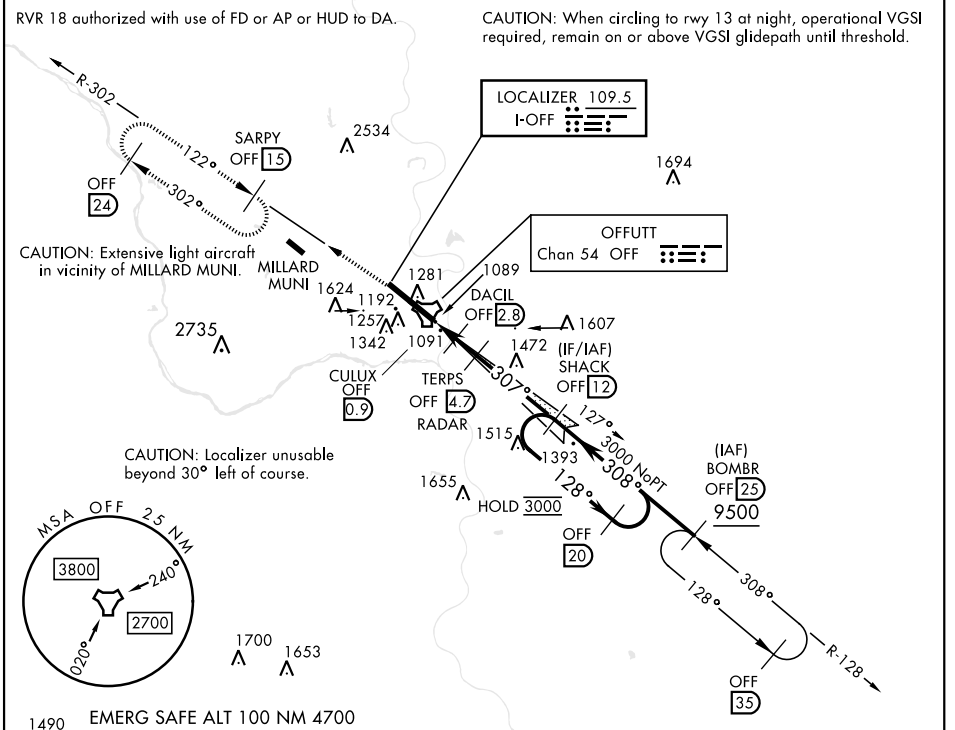
RADAR or DME required.

ALSF-1

MISSED APPROACH: Climb to 3000 via OFF TACAN R-302 to SARPY and hold.

\*\*\*When ALS inop, increase RVR to 40 and vis to 3/4 mile.  
 \*\*\*When ALS inop, increase RVR to 55 and vis to 1 mile.  
 \*\*\*Circling not authorized N of Rwy 13-31.

ATIS <b>126.025 273.5</b>	OMAHA APP CON <b>124.5 263.0 (E)</b> <b>135.875 354.0 (W)</b>	TOWER <b>123.7 279.625</b>	GND CON <b>121.7 289.4</b>
------------------------------	---	-------------------------------	-------------------------------



ELEV 1048	TDZE 991
Rwy 13 Idg 10,695' Rwy 31 Idg 10,612'	
HIRL Rwy 13-31 Rwy 13-31 ALS nstd	
FAF to MAP 3.8 NM	
Knots	60 90 120 150 180
Min:Sec	3:48 2:32 1:54 1:31 1:16

OMAHA, NEBRASKA 41°07'N-95°54'W OFFUTT AFB (KOFF)

Amdt 1 22FEB24

# ILS or LOC Y RWY 31

NC-2, 14 MAY 2026 to 11 JUN 2026

NC-2, 14 MAY 2026 to 11 JUN 2026