

OMAHA, NEBRASKA

RNAV (GPS) RWY 13

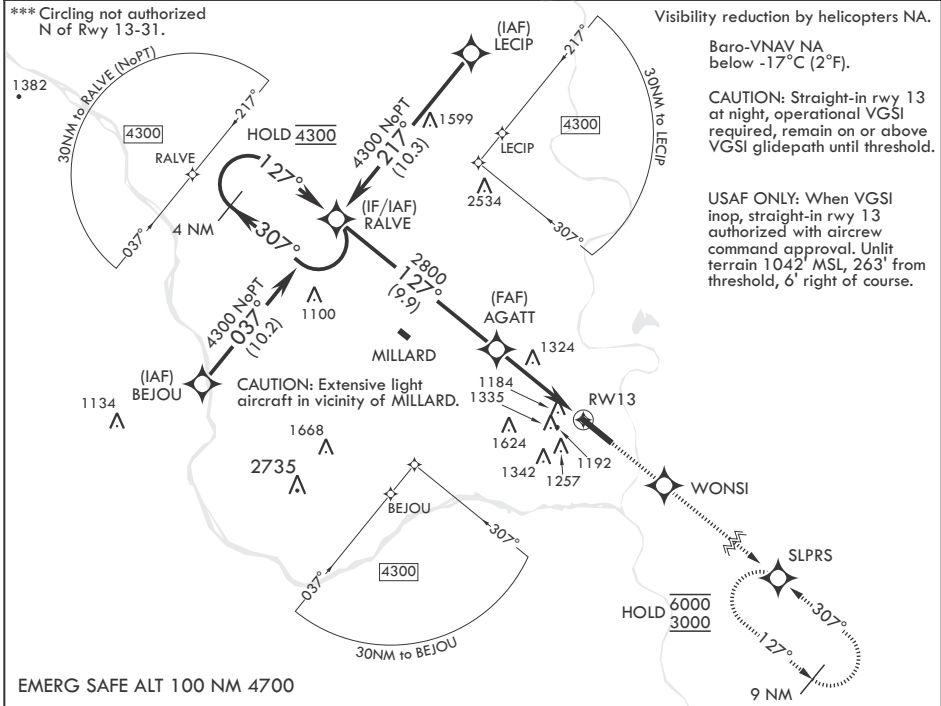
WAAS CH 91358 W13A	APCH CRS 127°	Rwy ldg 10,695	TDZE 1048
		Arprt Elev 1048	

-(USAF)

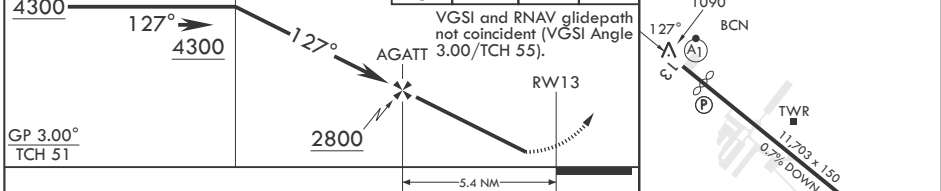
OFFUTT AFB (KOFF)

RNP APCH-GPS	ALSF-1	MISSED APPROACH: Climb to 3000 direct WONSI, track 127° to SLPRS and hold.
<p>▼ * When ALS inop, increase vis to 1 1/4 miles. ** When ALS inop, increase CAT AB RVR to 55, vis to 1 mile; CAT CDE vis to 1 1/2 miles.</p>		

<p>ATIS 126.025 273.5</p>	<p>OMAHA APP CON/DEP CON 124.5 263.0 E 135.875 354.05 W</p>	<p>TOWER 123.7 279.625</p>	<p>GND CON 121.7 289.4</p>
--------------------------------------	-----------------------------------------------------------------------------------	---------------------------------------	---------------------------------------



4 NM Holding Pattern	3000	WONSI	tr 127°	SLPRS	ELEV 1048	TDZE 1048
<p>4300 ← 307°</p> <p>4300 → 127°</p> <p>4300 → 127°</p>	<p>3000</p> <p>WONSI</p> <p>tr 127°</p>		<p>SLPRS</p>	<p>ELEV 1048</p>	<p>TDZE 1048</p>	<p>Rwy 13 ldg 10,695'</p> <p>Rwy 31 ldg 10,612'</p>



CATEGORY	A	B	C	D	E
LPV DA	1298/50		250	(300-1)	
LNAV/VNAV DA*	1479/50		431	(500-1)	
LNAV MDA**	1580/50	532 (600-1)	1580/55	532	(600-1)
C CIRCLING***	1580-1	532 (600-1)	1660-1 1/4 612 (700-1 1/4)	1940-3	892 (900-3)

HIRL all Rwys
Rwy 13-31 ALS nstd

OMAHA, NEBRASKA

41°07'N - 95°55'W

OFFUTT AFB (KOFF)

Amdt 1 22FEB24

RNAV (GPS) RWY 13

NC-2, 14 MAY 2026 to 11 JUN 2026

NC-2, 14 MAY 2026 to 11 JUN 2026