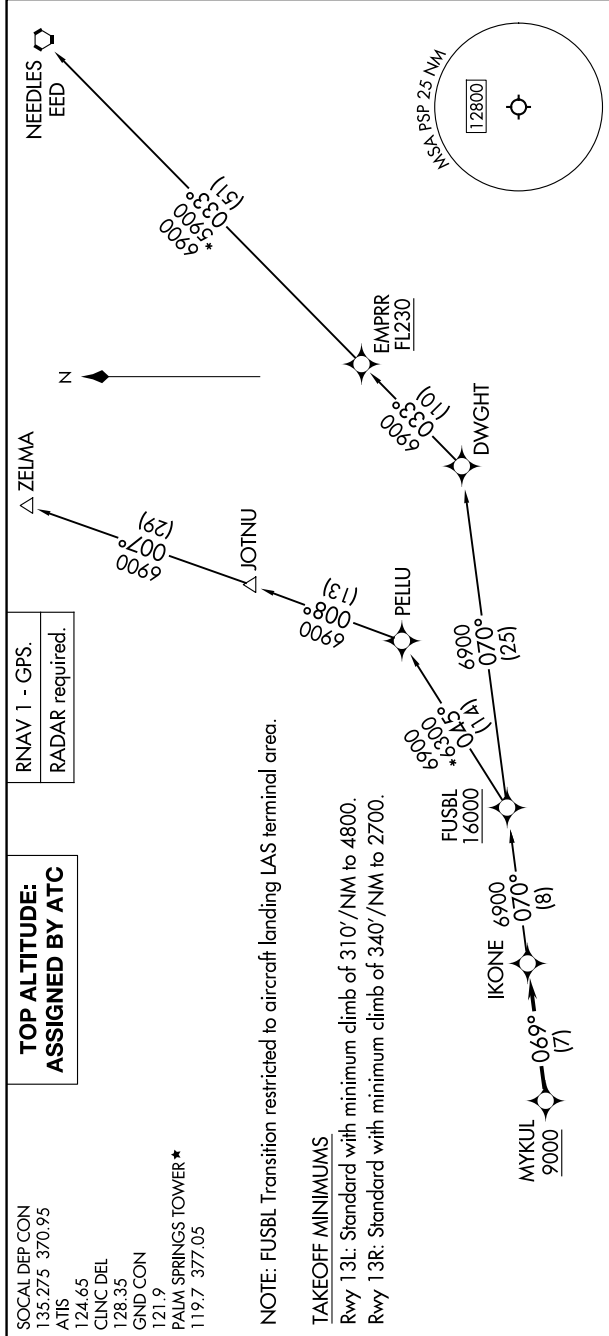


IKONE ONE DEPARTURE (RNAV)

AL-545 (FAA)

PALM SPRINGS INTL (PSP)
PALM SPRINGS, CALIFORNIA

SW-3, 14 MAY 2026 to 11 JUN 2026



**TOP ALTITUDE:
ASSIGNED BY ATC**

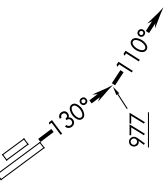
RNAV 1 - GPS.
RADAR required.

SOCAL DEP CON
135.275 370.95
ATIS
124.65
CLNC DEL
128.35
GND CON
121.9
PALM SPRINGS TOWER*
119.7 377.05

NOTE: FUSBL Transition restricted to aircraft landing LAS terminal area.

TAKEOFF MINIMUMS

Rwy 13L: Standard with minimum climb of 310'/NM to 4800.
Rwy 13R: Standard with minimum climb of 340'/NM to 2700.



NOTE: Chart not to scale.

DEPARTURE ROUTE DESCRIPTION

TAKEOFF RUNWAYS 13L/R: Climb on heading 130° to 977, then on heading 110° or as assigned by ATC, for vectors to cross MYKUL at or above 9000, thence on track 069° to IKONE, then on transition. Maintain ATC assigned altitude, expect filed altitude 10 minutes after departure.

- FUSBL TRANSITION (IKONE1.FUSBL)
- NEEDLES TRANSITION (IKONE1.EED)
- ZELMA TRANSITION (IKONE1.ZELMA)

SW-3, 14 MAY 2026 to 11 JUN 2026