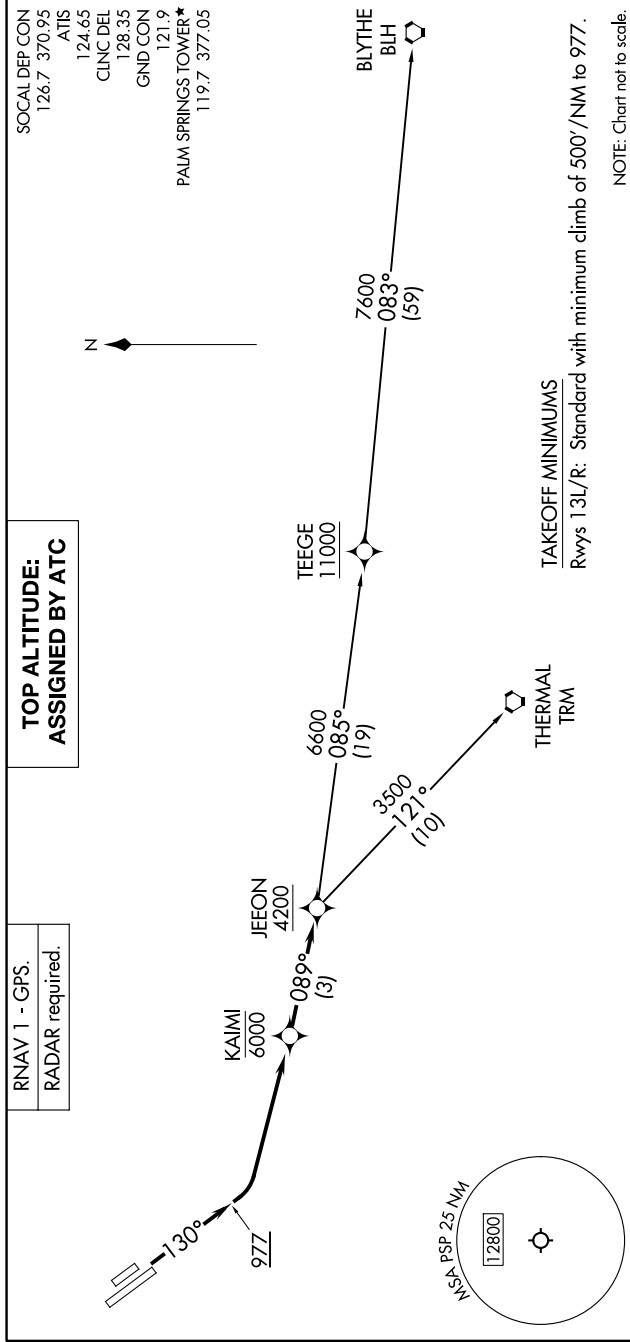


SW-3, 14 MAY 2026 to 11 JUN 2026



DEPARTURE ROUTE DESCRIPTION

TAKEOFF RUNWAYS 13L/R: Climb on heading 130° to 977, then left turn direct KAIMI at or below 6000, thence then on track 089° to cross JEEON at or above 4200, then on assigned (transition). Maintain ATC assigned altitude, expect filed altitude 10 minutes after departure.

BLYTHE TRANSITION (JEEON1.BLH)
THERMAL TRANSITION (JEEON1.TRM)

SW-3, 14 MAY 2026 to 11 JUN 2026