

# RDBUL ONE ARRIVAL (RNAV)

AL-545 (FAA)

PALM SPRINGS, CALIFORNIA

SW-3, 14 MAY 2026 to 11 JUN 2026

### ARRIVAL ROUTE DESCRIPTION

- CURIV TRANSITION (CURIV.RDBUL1)
- PARKER TRANSITION (PKE.RDBUL1)
- YORRK TRANSITION (YORRK.RDBUL1)
- ZELMA TRANSITION (ZELMA.RDBUL1)

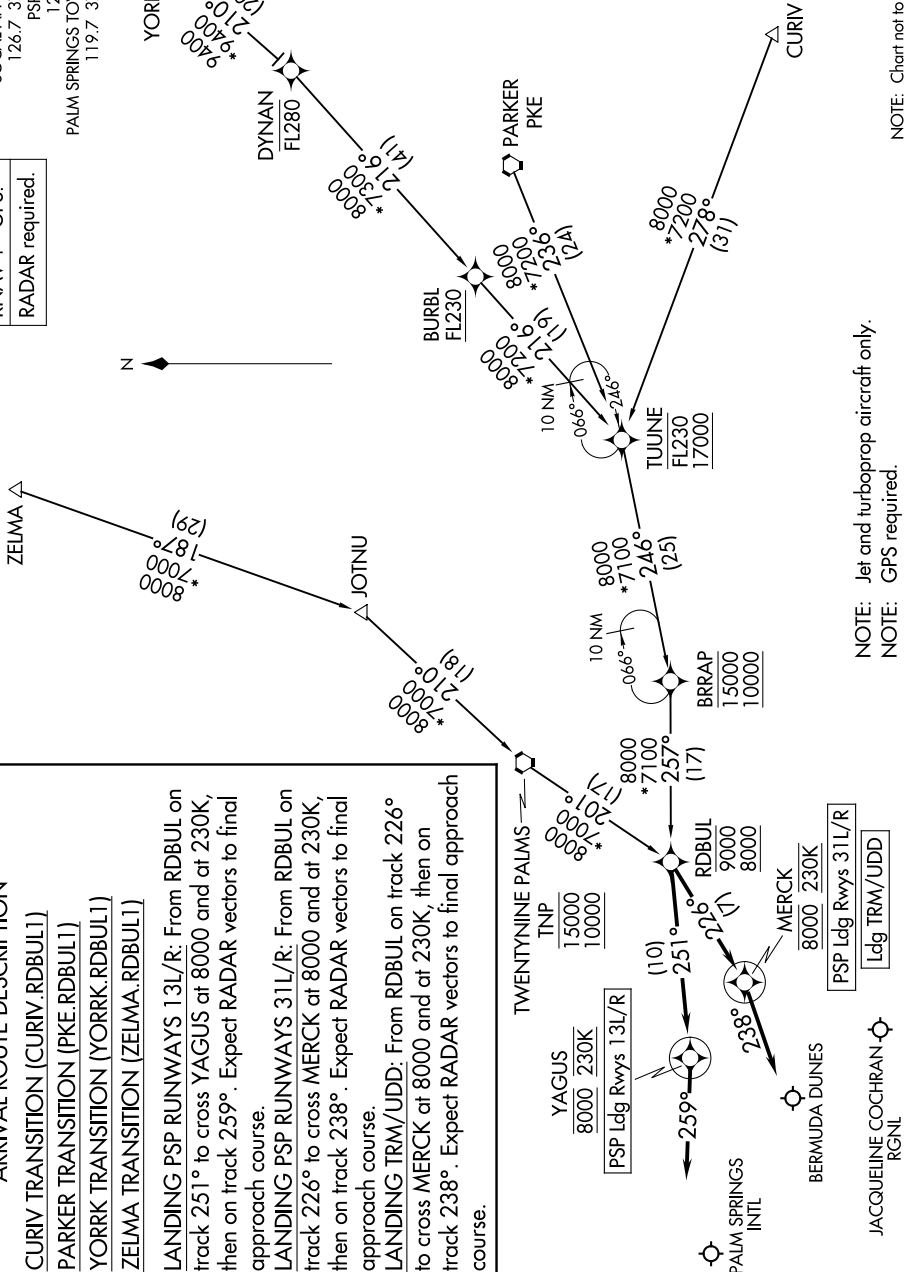
**LANDING PSP RUNWAYS 13L/R:** From RDBUL on track 251° to cross YAGUS at 8000 and at 230K, then on track 259°. Expect RADAR vectors to final approach course.

**LANDING PSP RUNWAYS 31L/R:** From RDBUL on track 226° to cross MERCK at 8000 and at 230K, then on track 238°. Expect RADAR vectors to final approach course.

**LANDING TRM/UDD:** From RDBUL on track 226° to cross MERCK at 8000 and at 230K, then on track 238°. Expect RADAR vectors to final approach course.

SOCAL APP CON  
126.7 370.95  
PSP ATIS  
124.65  
PALM SPRINGS TOWER\*  
119.7 377.05

RNAV 1 - GPS.
RADAR required.



NOTE: Chart not to scale.

NOTE: Jet and turboprop aircraft only.  
NOTE: GPS required.

SW-3, 14 MAY 2026 to 11 JUN 2026

# RDBUL ONE ARRIVAL (RNAV)

(RDBUL.RDBUL1) 12JUN25

PALM SPRINGS, CALIFORNIA