

APP CRS	Rwy Ldg	<b>6857</b>
<b>130°</b>	TDZE	<b>451</b>
	Apt Elev	<b>477</b>

# RNAV (RNP) Z RWY 13R

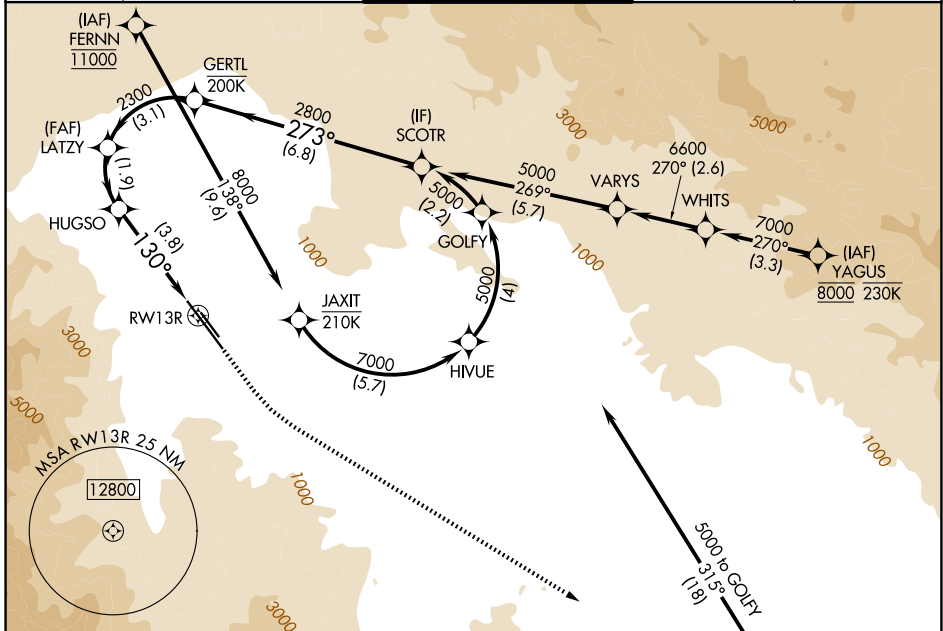
PALM SPRINGS INTL (PSP)

RNP AR APCH-GPS, RF, min RNP 0.50. Authorization required.

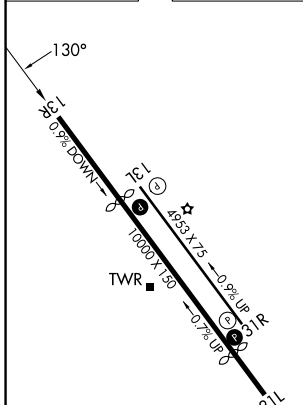
MISSED APPROACH: Climb to 900 then climbing left turn to 4000 direct TRM VORTAC and hold.

▼ For uncompensated Baro-VNAV systems, procedure NA below 4°C or above 54°C.

ATIS <b>124.65</b>	SOCAL APP CON <b>126.7 370.95</b> <b>135.275 251.1</b>	PALM SPRINGS TOWER * <b>119.7 (CTAF) 0 377.05</b>	GND CON <b>121.9</b>	UNICOM <b>122.95</b>
-----------------------	--	--	-------------------------	-------------------------



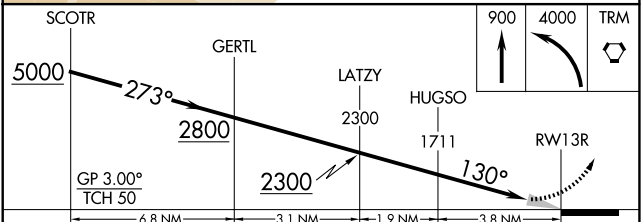
ELEV 477	<b>D</b>	TDZE 451
----------	----------	----------



HIRL Rwy 13R-31L  
MIRL Rwy 13L-31R  
REIL Rws 13R and 31L  
REIL Rws 13L and 31R

Procedure NA for arrival on TRM VORTAC airway radials 263 CW 021.

(IAF) THERMAL TRM 4 NM



CATEGORY	A	B	C	D
RNP 0.10 DA		749- <sup>7</sup> / <sub>8</sub>	298 (300- <sup>7</sup> / <sub>8</sub> )	
RNP 0.30 DA		882-1 <sup>1</sup> / <sub>4</sub>	431 (500-1 <sup>1</sup> / <sub>4</sub> )	

**AUTHORIZATION REQUIRED**

SW-3, 14 MAY 2026 to 11 JUN 2026

SW-3, 14 MAY 2026 to 11 JUN 2026