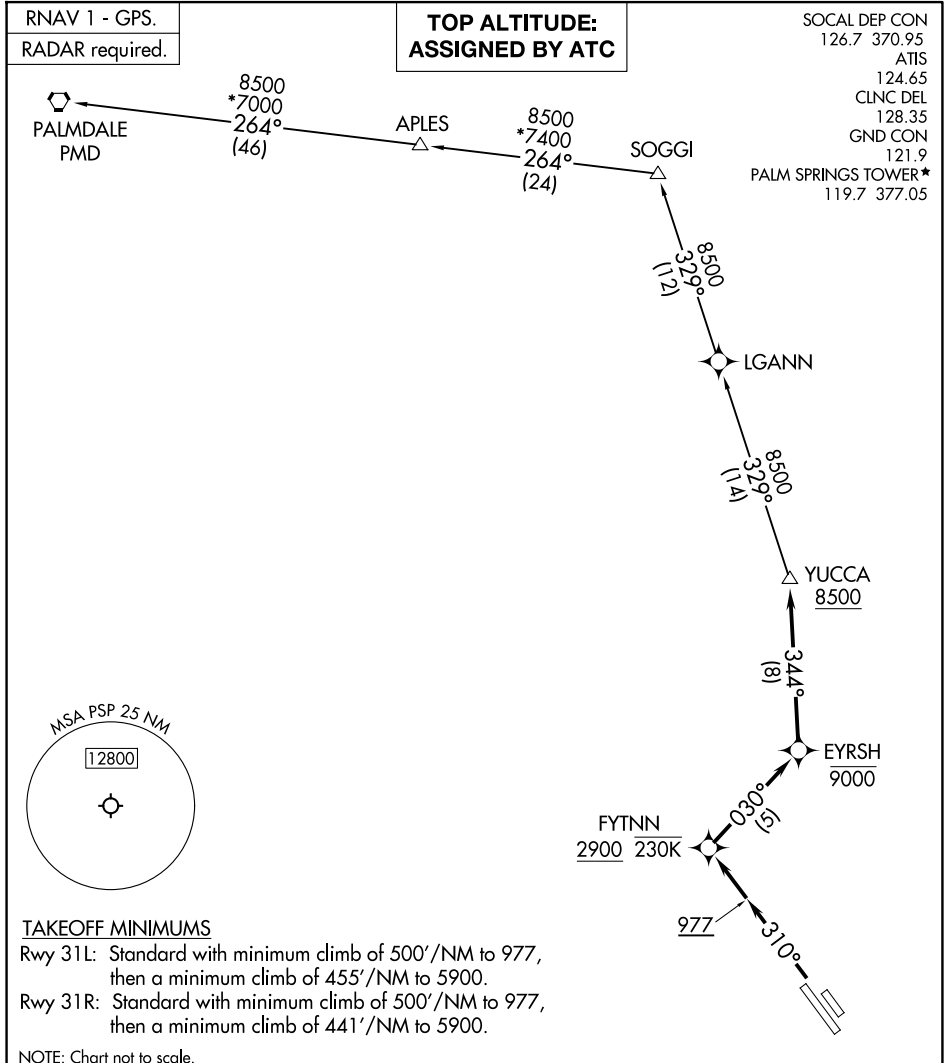


(YUCCA1.YUCCA) 25163

YUCCA ONE DEPARTURE (RNAV)

AL-545 (FAA)

PALM SPRINGS INTL (PSP)
PALM SPRINGS, CALIFORNIA



SW-3, 14 MAY 2026 to 11 JUN 2026

SW-3, 14 MAY 2026 to 11 JUN 2026

TAKEOFF MINIMUMS

- Rwy 31L: Standard with minimum climb of 500'/NM to 977, then a minimum climb of 455'/NM to 5900.
- Rwy 31R: Standard with minimum climb of 500'/NM to 977, then a minimum climb of 441'/NM to 5900.

NOTE: Chart not to scale.

DEPARTURE ROUTE DESCRIPTION

TAKEOFF RUNWAYS 31L/R: Climb on heading 310° to 977, then direct FYTNN at or above 2900 at or below 230K, thence

. . . .on track 030° to cross EYRSH at or below 9000, then on track 344° to cross YUCCA at or above 8500, then on assigned (transition). Maintain ATC assigned altitude, expect filed altitude 10 minutes after departure.

PALMDALE TRANSITION (YUCCA1.PMD)

YUCCA ONE DEPARTURE (RNAV)

(YUCCA1.YUCCA) 12JUN25

PALM SPRINGS, CALIFORNIA
PALM SPRINGS INTL (PSP)