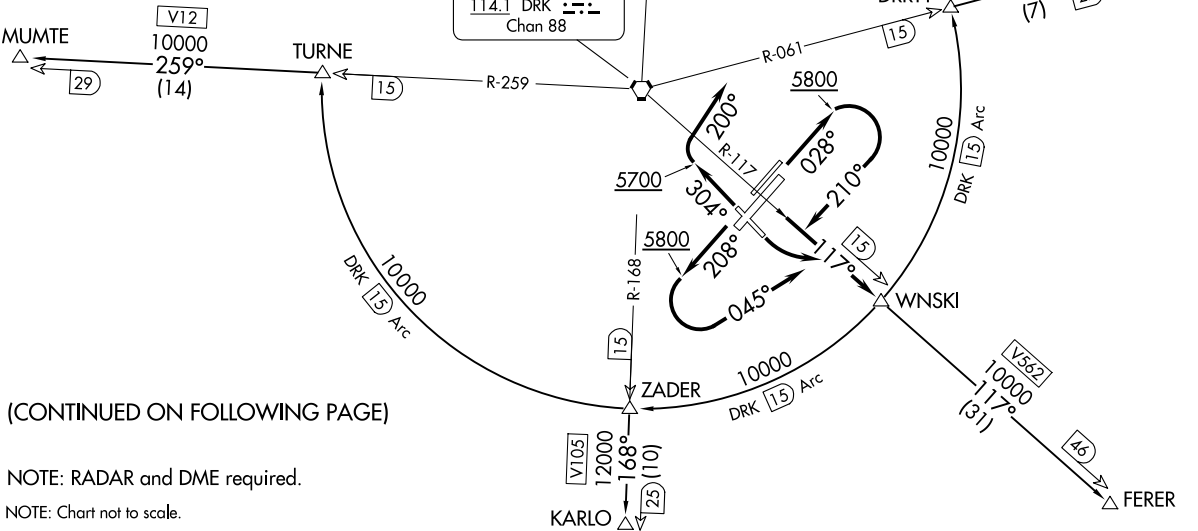


TOP ALTITUDE:
KACEE, KARLO TRANSITIONS: 12000
FERER, JUWSO, MUMTE
TRANSITIONS: 10000

TAKEOFF MINIMUMS

- Rwy 3L: Standard with minimum climb of 330' per NM to 6800.
- Rwy 3R: Standard with minimum climb of 340' per NM to 6800.
- Rwy 12: Standard with minimum climb of 500' per NM to 7100.
- Rwys 21L: Standard with minimum climb of 335' per NM to 7000.
- Rwys 21R: Standard with minimum climb of 335' per NM to 7100.
- Rwy 30: Standard with minimum climb of 400' per NM to 6900.



(CONTINUED ON FOLLOWING PAGE)

NOTE: RADAR and DME required.

NOTE: Chart not to scale.

PHOENIX DEP CON
 133.575 281.55
 ATIS
 127.2
 CLNC DEL
 119.25
 GND CON
 121.7
 PRESCOTT TOWER★
 125.3 257.9

FLAGSTAFF
 113.85 FLG
 Chan 85(Y)

DRAKE
 114.1 DRK
 Chan 88

WNSKI TWO DEPARTURE
 (WNSKI2.WNSKI) 20JUN19

PRESCOTT, ARIZONA
 PRESCOTT RGNL/ERNEST A LOVE FLD (PRC)

(WNSKI2.WNSKI) 24305
 WNSKI TWO DEPARTURE

AL-546 (FAA)

PRESCOTT RGNL/ERNEST A LOVE FLD (PRC)
 PRESCOTT, ARIZONA



DEPARTURE ROUTE DESCRIPTION

TAKEOFF RUNWAYS 3L/R: Climb on heading 028° to 5800, then climbing right turn to heading 210° to intercept DRK VORTAC R-117 to WNSKI, thence. . . .

TAKEOFF RUNWAY 12: Climbing left turn to intercept DRK VORTAC R-117 to WNSKI, thence. . . .

TAKEOFF RUNWAYS 21L/R: Climb on heading 208° to 5800, then climbing left turn heading 045° to intercept DRK VORTAC R-117 to WNSKI, thence. . . .

TAKEOFF RUNWAY 30: Climb on heading 304° to 5700, then climbing right turn to heading 200° to intercept DRK VORTAC R-117 to WNSKI, thence. . . .

. . . .on transition. FERER, JUWSO, MUMTE, transitions maintain 10000. KACEE, KARLO, transitions maintain 12000. Expect filed altitude 5 minutes after departure.

FERER TRANSITION (WNSKI2.FERER): From over WNSKI on DRK R-117 to FERER.

JUWSO TRANSITION (WNSKI2.JUWSO): From over WNSKI on DRK 15 DME Arc CCW to DRRTY, then on DRK R-061 to JUWSO.

KACEE TRANSITION (WNSKI2.KACEE): From over WNSKI on DRK 15 DME Arc CCW to PHYLE, then on DRK R-349 to KACEE.

KARLO TRANSITION (WNSKI2.KARLO): From over WNSKI on DRK 15 DME Arc CW to ZADER, then on DRK R-168 to KARLO.

MUMTE TRANSITION (WNSKI2.MUMTE): From over WNSKI on DRK 15 DME Arc CW to TURNE, then on DRK R-259 to MUMTE.

SW-4, 14 MAY 2026 to 11 JUN 2026

SW-4, 14 MAY 2026 to 11 JUN 2026