

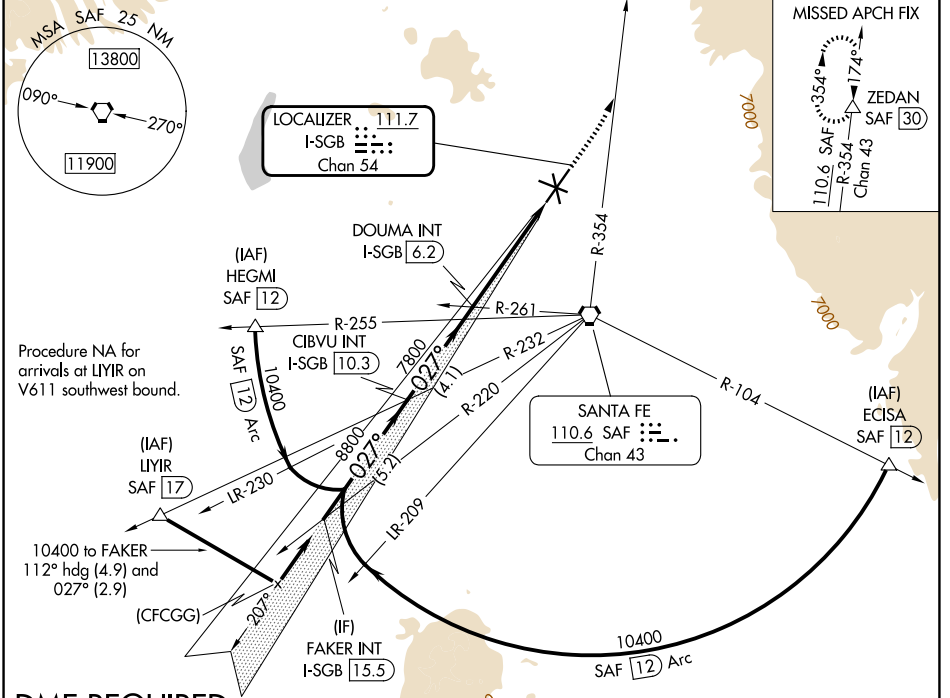
LOC/DME I-SGB	APP CRS	Rwy Ldg	8366
111.7	027°	TDZE	6303
Chan 54		Apt Elev	6349

ILS or LOC RWY 2

SANTA FE RGNL (SAF)

DME required. MISSED APPROACH: Climb to 7300 then climbing left turn to 11000 on SAF VORTAC R-354 to ZEDAN/SAF 30 DME and hold.

ATIS 128.55	ALBUQUERQUE CENTER 132.8 346.35	SANTA FE TOWER ★ 119.5 (CTAF) 239.3	GND CON 121.7	UNICOM 122.95
-----------------------	---	---	-------------------------	-------------------------



SW-1, 14 MAY 2026 to 11 JUN 2026

SW-1, 14 MAY 2026 to 11 JUN 2026

DME REQUIRED

ELEV 6349 TDZE 6303	
REIL Rwy 10, 15, 20 and 33 MIRL Rwy 2-20 and 15-33	
VGSi and ILS glidepath not coincident (VGSi Angle 3.00/TCH 69) FAKER INT I-SGB 15.5 CIBVU INT I-SGB 10.3 DOUMA INT I-SGB 6.2 7300 11000 ZEDAN SAF R-354 *LOC only	
10400 027° 8800 7800 GS 3.00° TCH 53 5.2 NM 4.1 NM 3.4 NM 1.2	
CATEGORY	A B C D
S-ILS 2	6503-¾ 200 (200-¾)
S-LOC 2	6740-1 437 (400-1) 6740-1¼ 437 (400-1¼)
CIRCLING	6800-1 451 (500-1) 6920-1 571 (600-1) 7340-3 991 (1000-3) 7660-3 1311 (1400-3)

