

(TAFOY3.TAFOY) 23334

TAFOY THREE DEPARTURE

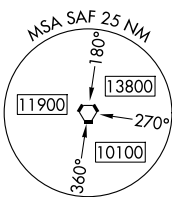
AL-548 (FAA)

SANTA FE RGNL (SAF)

SANTA FE, NEW MEXICO

ALBUQUERQUE CENTER
 132.8 346.35
 ATIS
 128.55
 GND CON
 121.7
 SANTA FE TOWER *
 119.5 239.3

**TOP ALTITUDE:
 ASSIGNED BY ATC**



FORT UNION
 117.3 FTI
 Chan 120

SANTA FE
 110.6 SAF
 Chan 43

TAKEOFF MINIMUMS

Rwys 15, 20, 33: Standard.
 Rwy 2: Standard with minimum climb of
 256' per NM to 8000.

CAUTION: Mountainous terrain all quadrants.

NOTE: Pilots must notify SAF air traffic control tower or
 Albuquerque air route traffic control center prior
 to flying this departure procedure.

NOTE: Chart not to scale.

TAFOY

ANTON CHICO
 117.8 ACH
 Chan 125

DEPARTURE ROUTE DESCRIPTION

TAKEOFF RUNWAY 2: Climbing left turn direct SAF VORTAC, then on SAF VORTAC R-104 to TAFOY, thence. . . .

TAKEOFF RUNWAY 15: Climb on heading 159° direct SAF VORTAC, then on SAF VORTAC R-104 to TAFOY, thence. . . .

TAKEOFF RUNWAY 20: Climbing left turn on heading 160° to intercept SAF VORTAC R-284 to SAF VORTAC, then on SAF VORTAC R-104 to TAFOY, thence. . . .

TAKEOFF RUNWAY 33: Climbing right turn direct SAF VORTAC, then on SAF VORTAC R-104 to TAFOY, thence. . . .

. . . . on assigned transition. Maintain ATC assigned altitude. Expect further clearance to filed altitude ten minutes after departure.

ANTON CHICO TRANSITION (TAFOY3.ACH): From over TAFOY on ACH R-285 to ACH VORTAC.

FORT UNION TRANSITION (TAFOY3.FTI): From over TAFOY on FTI R-215 to FTI VORTAC.

TAFOY THREE DEPARTURE

(TAFOY3.TAFOY) 15JUN23

SANTA FE, NEW MEXICO
 SANTA FE RGNL (SAF)

SW-1, 14 MAY 2026 to 11 JUN 2026

SW-1, 14 MAY 2026 to 11 JUN 2026