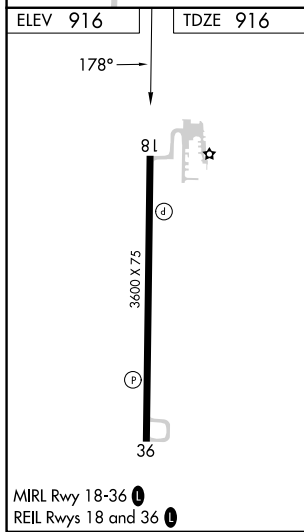
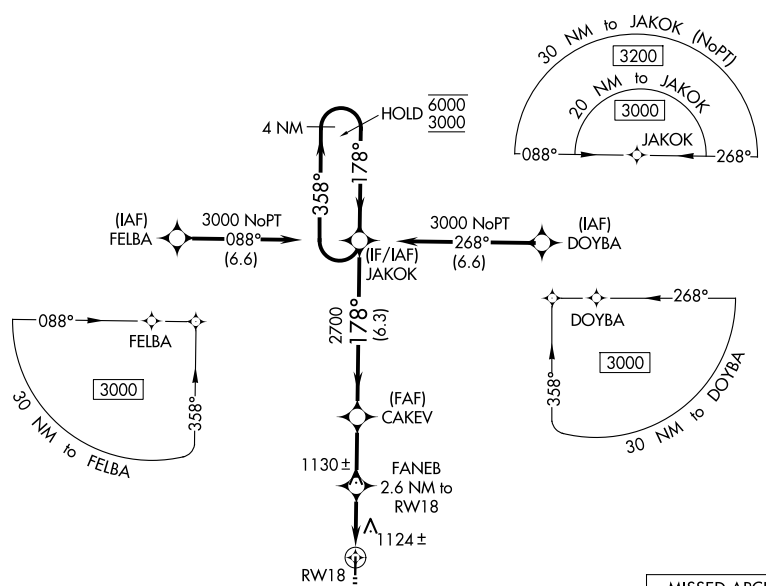


| | | |
|-------------|----------|-------------|
| APP CRS | Rwy Ldg | 3600 |
| 178° | TDZE | 916 |
| | Apt Elev | 916 |

RNAV (GPS) RWY 18

GOULD PETERSON MUNI (K57)

| | | |
|--|--|---|
| RNP APCH - GPS. | | MISSED APPROACH: Climb to 4000 direct IDOYE and hold, continue climb-in-hold to 4000. |
| ▽ Rwy 18 helicopter visibility reduction below 1 SM NA. ▲ NA Use Shenandoah altimeter setting; when not received, use Clarinar altimeter setting and increase all MDAs 20 feet and visibility LNAV Cat C ½ SM. Straight-in Rwy 18 NA at night, Circling Rwy 18 NA at night. | | |
| SDA AWOS-3 125.525 | MINNEAPOLIS CENTER 119.6 290.4 | CTAF 122.9 |



| | | | | |
|---|-----------------------|----------------------------|-------------------------|----|
| 4000 IDOYE | | JAKOK 4 NM Holding Pattern | | |
| FANEB 2.6 NM to RW18 CAKEV RW18 3.25° TCH 40 178° 1840 2700 358° → 6000 ← 178° 3000 | | | | |
| 2.6 NM | | 2.5 NM 6.3 NM | | |
| CATEGORY | A | B | C | D |
| LNAV MDA | 1440-1 | 524 (600-1) | 1440-1½ 524 (600-1½) | NA |
| CIRCLING | 1520-1 604 (700-1) | 1540-1 624 (700-1) | 1680-2¼ 764 (800-2¼) | NA |

NC-3, 14 MAY 2026 to 11 JUN 2026

NC-3, 14 MAY 2026 to 11 JUN 2026