

APP CRS	Rwy Ldg	<b>3600</b>
<b>358°</b>	TDZE	<b>916</b>
	Apt Elev	<b>916</b>

# RNAV (GPS) RWY 36

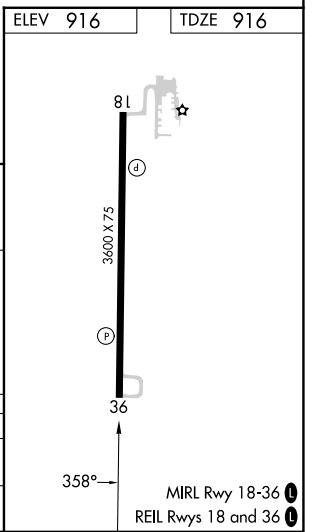
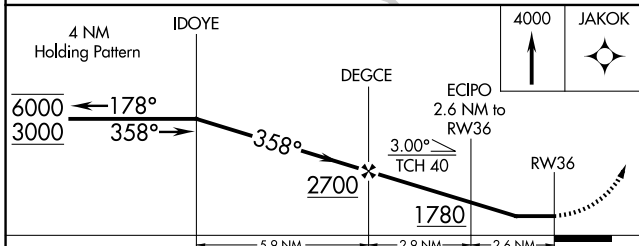
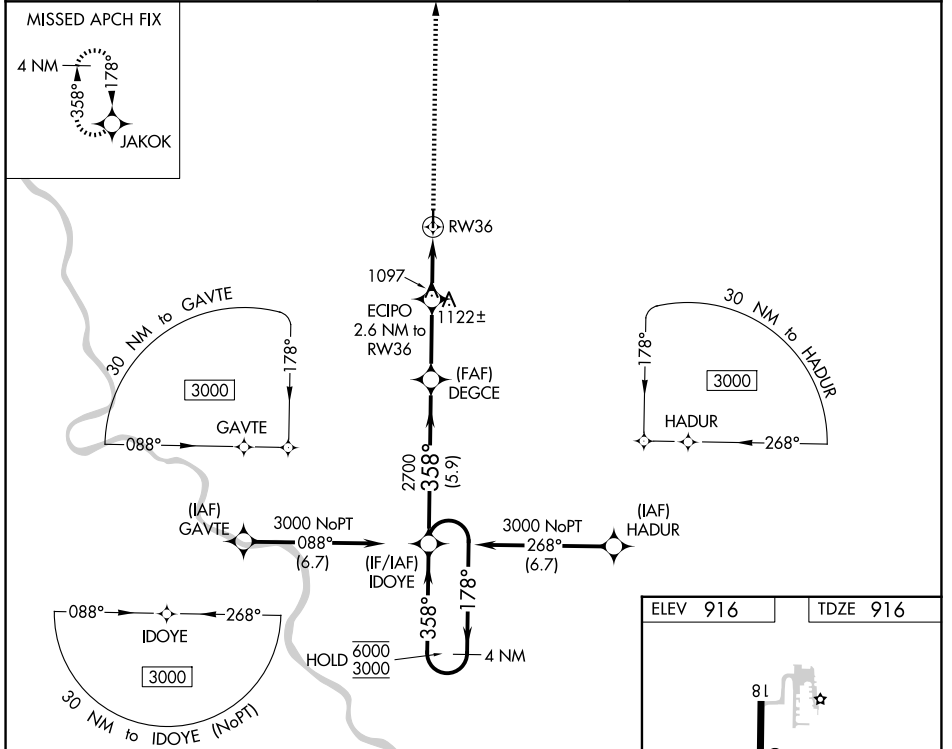
GOULD PETERSON MUNI (K57)

RNP APCH - GPS.

**NA** Rwy 36 helicopter visibility reduction below 3/4 SM NA.  
 Circling Rwy 18 NA at night.  
 Use Shenandoah altimeter setting; when not received, use Clarinda altimeter setting and increase all MDAs 20 feet.

MISSED APPROACH: Climb to 4000 direct JAKOK and hold, Continue climb-in-hold to 4000

SDA AWOS-3 <b>125.525</b>	MINNEAPOLIS CENTER <b>119.6 290.4</b>	CTAF <b>122.9 0</b>
------------------------------	--	------------------------



CATEGORY	A	B	C	D
LNVA MDA	1460-1	544 (600-1)	1460-1 1/8 544 (600-1 1/8)	NA
CIRCLING	1520-1 604 (700-1)	1540-1 624 (700-1)	1680-2 1/4 764 (800-2 1/4)	NA

NC-3, 14 MAY 2026 to 11 JUN 2026

NC-3, 14 MAY 2026 to 11 JUN 2026