

SPOKANE, WASHINGTON

ILS RWY 5 (CAT II)

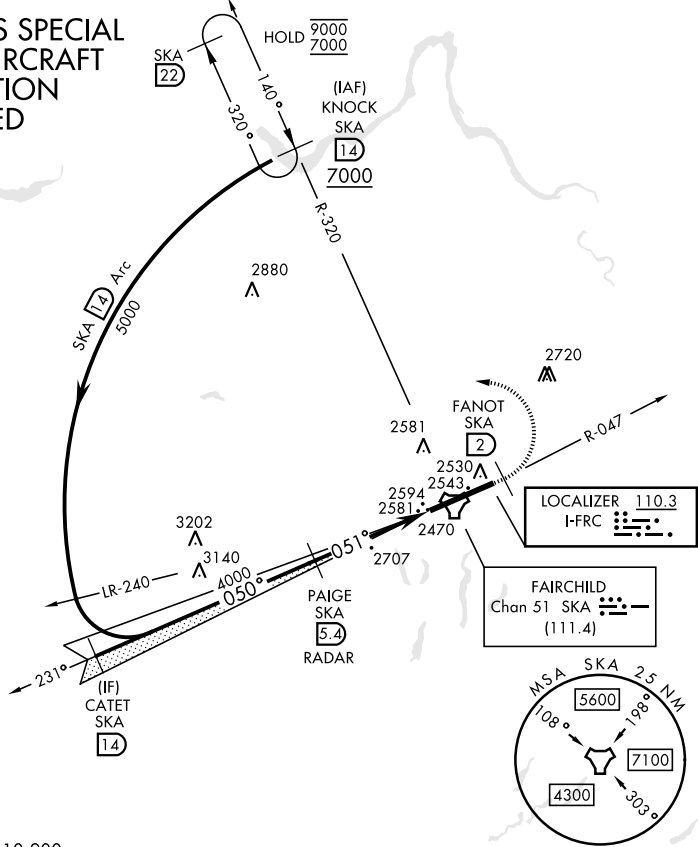
LOC I-FRC 110.3	APCH CRS 051°	Rwy Idg 13,899 TDZE 2462 Arpt Elev 2462
---------------------------	-------------------------	--

[USAF]

FAIRCHILD AFB (KSKA)

RADAR required for KNOCK holding.		ALSF-2	MISSED APPROACH: Climb to 7000 via SKA TACAN R-047. At FANOT turn left hdg 275° to intcp SKA R-320 to KNOCK and hold, continue climb in hold to 7000.	
ATIS 257.625	SPOKANE APP CON 123.75 282.25 (208° - 028°) 133.35 263.0 (029° - 207°)		TOWER 120.35 233.7	GND CON 123.6 275.8

CATEGORY II ILS SPECIAL AIRCREW & AIRCRAFT CERTIFICATION REQUIRED



EMERG SAFE ALT 100 NM 10,900

CATET SKA 14 Intcp Lcwr		PAIGE SKA 5.4 RADAR		7000 SKA R-047	FANOT SKA 2	hdg 275°	SKA R-320	ELEV 2462	TDZE 2462
5000		4000		4.6 NM		1192'		2569	
GS 3.00° TCH 58		050°		051°		13,899 x 150		2685	
CATEGORY A		B		C		D		E	
S-ILS 5		RA 98/12		100		DA 2562		HIRL Rwy 5-23 TDZL/RCLS Rwy 5	

SPOKANE, WASHINGTON

47°37'N-117°39'W

FAIRCHILD AFB (KSKA)

Amtd 2 03NOV22

ILS RWY 5 (CAT II)

NW-1, 14 MAY 2026 to 11 JUN 2026

NW-1, 14 MAY 2026 to 11 JUN 2026