

SPOKANE, WASHINGTON

# ILS or LOC RWY 23

LOC I-SKA <b>110.3</b>	APCH CRS <b>231°</b>	Rwy Idg <b>13,899</b> TDZE <b>2423</b> Arprt Elev <b>2462</b>
---------------------------	-------------------------	---

[USAF]

FAIRCHILD AFB (KSKA)

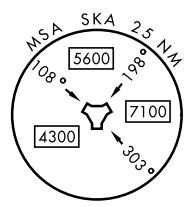
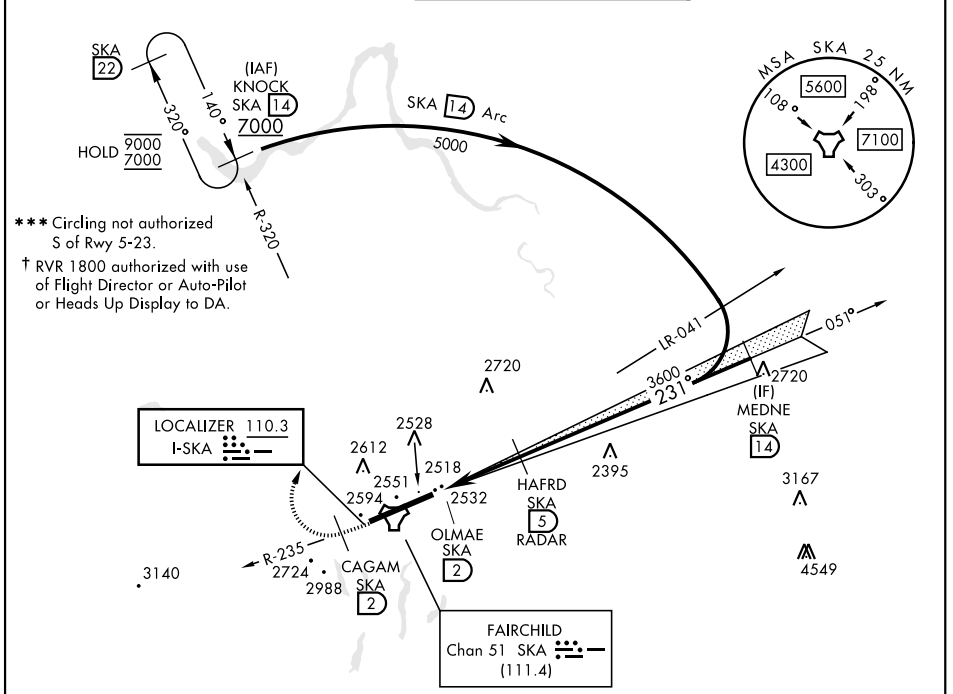
DME or RADAR reqrd for LOC. RADAR reqrd for KNOCK holding.

ALSF-1

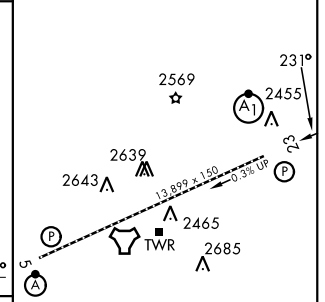
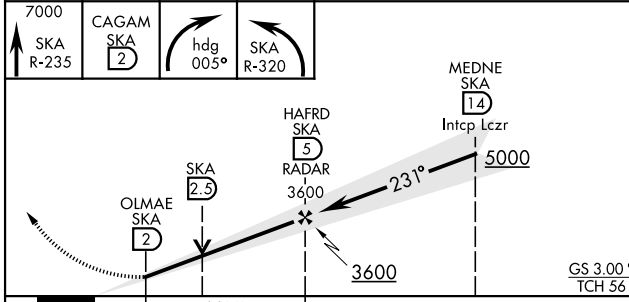
MISSED APPROACH: Climb to 7000 via SKA R-235. At CAGAM, turn right heading 005° to intcp SKA R-320 to KNOCK and hold, cont climb in hold to 7000.

\*\*\* When ALS inop, increase RVR to 40 and vis to ¼ mile.  
\*\* When ALS inop, increase RVR to 55 and vis to 1 mile.

ATIS <b>257.625</b>	SPOKANE APP CON <b>123.75 282.25</b> (208° - 028°) <b>133.35 263.0</b> (029° - 207°)	TOWER <b>120.35 233.7</b>	GND CON <b>123.6 275.8</b>
------------------------	--	------------------------------	-------------------------------



EMERG SAFE ALT 100 NM 10,900	ELEV 2462	TDZE 2423
------------------------------	-----------	-----------



CATEGORY	A	B	C	D	E	HIRL Rwy 5-23 TDZL/RCLS Rwy 5
S-ILS 23 *†	2623/24		200	(200-½)		
S-LOC 23 **	2800/24	377 (400-½)	2800/35	377	(400-¾)	FAF to MAP 3.0 NM
CIRCLING ***	2900-1	2920-1	3040-1½	3040-2	3600-3	Knots 60 90 120 150 180
	438 (500-1)	458 (500-1)	578 (600-1½)	578 (600-2)	1138 (1200-3)	Min:Sec 3:00 2:00 1:30 1:12 1:00

SPOKANE, WASHINGTON 47°37'N-117°39'W FAIRCHILD AFB (KSKA)

Amdt 4 03NOV22

# ILS or LOC RWY 23

NW-1, 14 MAY 2026 to 11 JUN 2026

NW-1, 14 MAY 2026 to 11 JUN 2026