


SPOKANE, WASHINGTON

# RNAV (GPS) RWY 23

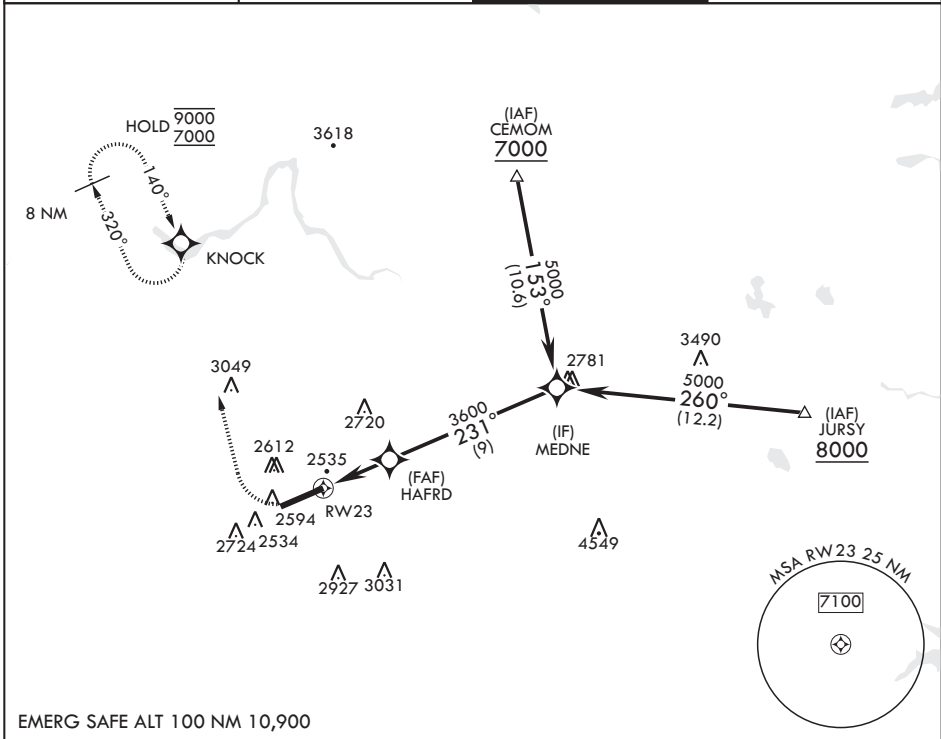
APCH CRS	Rwy ldg	<b>13,899</b>
231°	TDZE	<b>2423</b>
	Arprt Elev	<b>2462</b>

(USAF)

FAIRCHILD AFB (KSKA)

RNP APCH	ALSIF-1 	MISSED APPROACH: Climb to 3000, then climbing right turn to 7000 direct to KNOCK and hold, continue climb in hold to 7000.
RADAR required for KNOCK holding.		
* When ALS inop, increase CAT AB RVR to 55 and vis to 1 mile, CAT CDE vis to 1 1/4 miles. ** Circling S of Rwy 5-23 NA.		


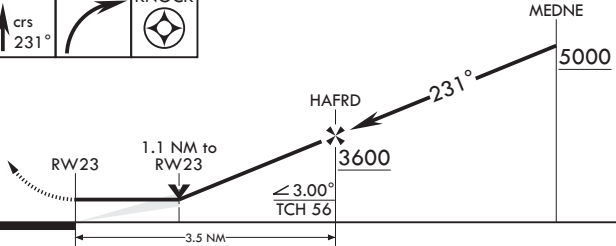
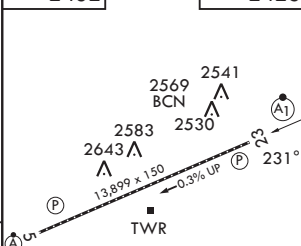
ATIS <b>257.625</b>	SPOKANE APP CON <b>123.75 282.25 (208°-028°)</b> <b>133.35 263.0 (029°-207°)</b>	TOWER <b>120.35 233.7</b>	GND CON <b>123.6 275.8</b>
------------------------	--	------------------------------	-------------------------------



NW-1, 14 MAY 2026 to 11 JUN 2026

NW-1, 14 MAY 2026 to 11 JUN 2026

EMERG SAFE ALT 100 NM 10,900

3000 crs 231° KNOCK 	7000 MEDNE 5000	ELEV 2462	TDZE 2423		
					
CATEGORY	A	B	C	D	E
RNAV MDA*	2820/24	397 (400-1/2)	2820/35	397	(400-5/8)
CIRCLING**	2900-1 438 (500-1)	2920-1 458 (500-1)	3040-1 1/2 578 (600-1 1/2)	3040-2 578 (600-2)	3600-3 1138 (1200-3)
HIRL all rwys TDZL/CL Rwy 5					

SPOKANE, WASHINGTON

47°37'N - 117°39'W

FAIRCHILD AFB (KSKA)

Amdt 2 03NOV22

# RNAV (GPS) RWY 23