

SPOKANE, WASHINGTON

# RNAV (GPS) RWY 5

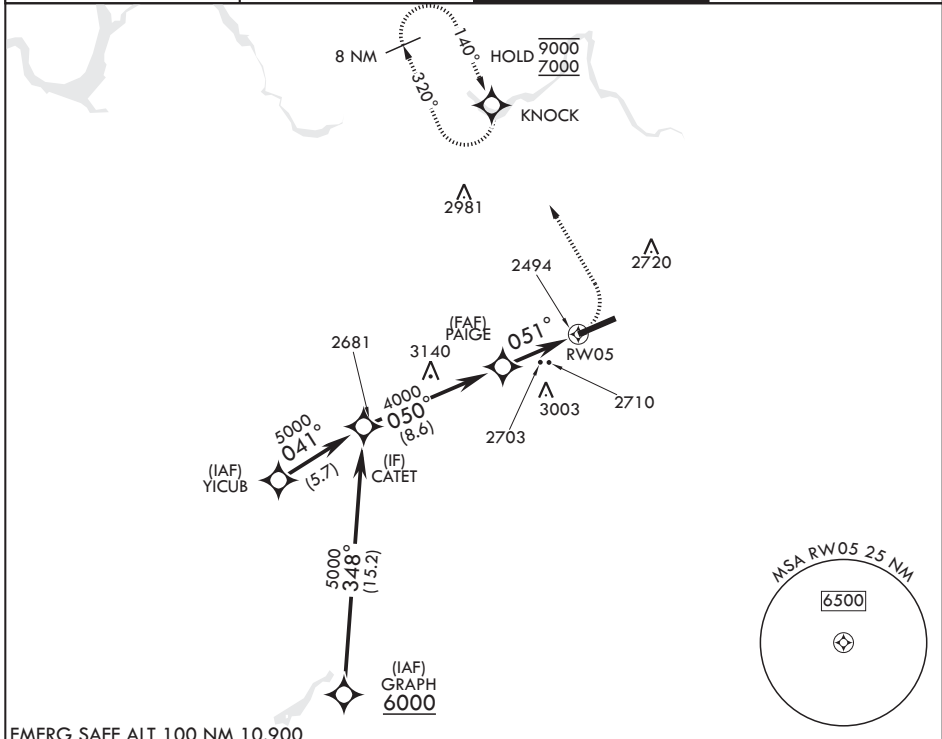
APCH CRS <b>051°</b>	Rwy Idg <b>13,899</b>
	TDZE <b>2462</b>
	Arprt Elev <b>2462</b>

(USAF)

FAIRCHILD AFB (KSKA)

RNP APCH	ALSF-2	MISSED APPROACH: Climbing left turn to 7000 direct KNOCK and hold, continue climb in hold to 7000.
RADAR required for KNOCK holding.		
<p>▼ *When ALS inop, increase CAT A RVR to 55, vis to 1 mile, CAT B RVR to 60, vis to 1 1/4 miles, and CAT CDE vis to 2 1/2 miles.</p> <p>** Circling S of RWY 5-23 NA.</p>		

ATIS <b>257.625</b>	SPOKANE APP CON <b>123.75 282.25 (208°-028°)</b> <b>133.35 263.0 (029°-207°)</b>	TOWER <b>120.35 233.7</b>	GND CON <b>123.6 275.8</b>
------------------------	--	------------------------------	-------------------------------



EMERG SAFE ALT 100 NM 10,900

CATET 5000		PAIGE 4000		RWY 5 2703		ELEV 2462	TDZE 2462
050°		051°		051°		2612	
3.00° ≥ TCH 58		1.8 NM to RWY 5		4.6 NM		BCN 2643 2583 13,899 x 150 0.3% DOWN TWR 2491	
CATEGORY	A	B	C	D	E		
LNAY MDA*	3100/24	638 (700-1/2)	3100-1%	638	(700-1%)		
CIRCLING**	3100-1	638 (700-1)	3100-1 3/4 638 (700-1%)	3100-2 638 (700-2)	3600-3 1138 (1200-3)	HIRL all rwys TDZL/CL Rwy 5	

SPOKANE, WASHINGTON  
Amdt 2 03NOV22

47°37'N - 117°39'W

FAIRCHILD AFB (KSKA)

# RNAV (GPS) RWY 5

NW-1, 14 MAY 2026 to 11 JUN 2026

NW-1, 14 MAY 2026 to 11 JUN 2026