

SPOKANE, WASHINGTON

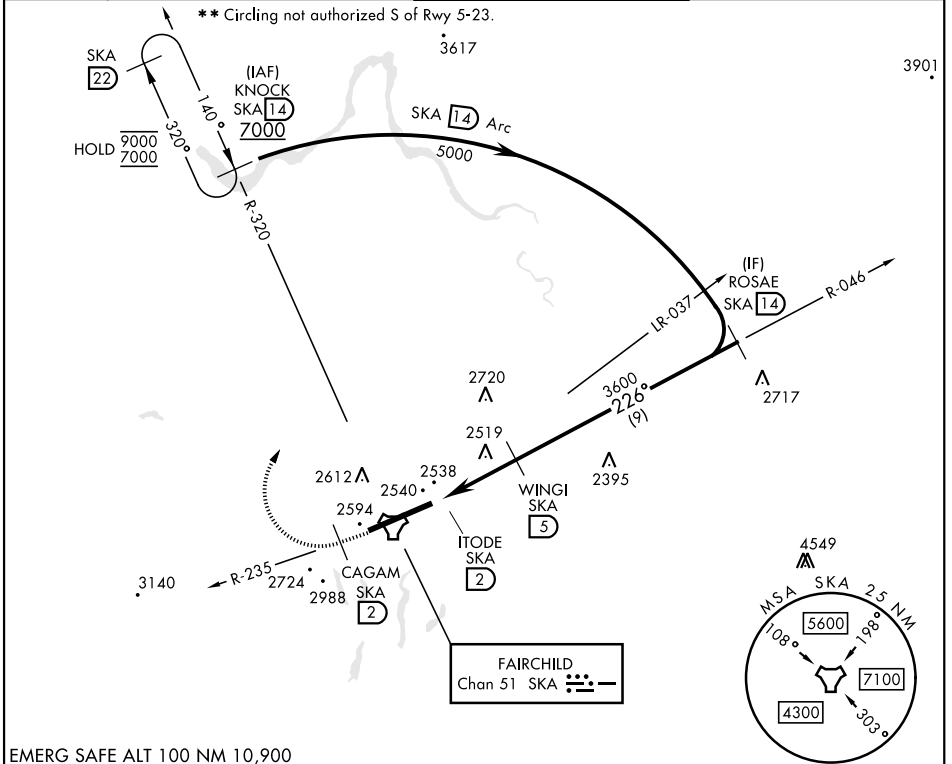
# TACAN RWY 23

TACAN SKA Chan <b>51</b>	APCH CRS <b>226°</b>	Rwy Idg <b>13,899</b> TDZE <b>2423</b> Arprt Elev <b>2462</b>
--------------------------	----------------------	---

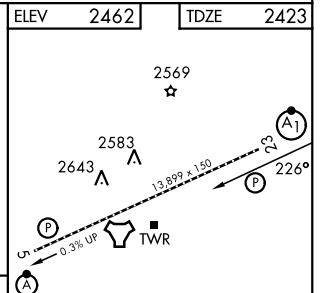
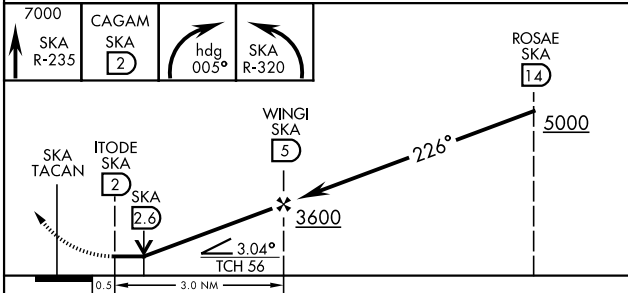
[USAF]

FAIRCHILD AFB (KSKA)

RADAR required for KNOCK holding.		ALSIF-1	MISSED APPROACH: Climb to 7000 via SKA TACAN R-235. At CAGAM, turn right hdg 005° to intcp SKA R-320 to KNOCK and hold, cont climb in hold to 7000.	
▼ * When ALS inop, increase CAT AB RVR to 55 and vis to 1 mile, CAT CDE RVR to 60, vis to 1½ miles.		(A1)		
ATIS <b>257.625</b>	SPOKANE APP CON <b>123.75 282.25</b> <b>133.35 263.0</b> (208° - 028°) (029° - 207°)	TOWER <b>120.35 233.7</b>	GND CON <b>123.6 275.8</b>	



EMERG SAFE ALT 100 NM 10,900



CATEGORY	A	B	C	D	E
S-23 *	2820/24	397 (400-½)	2820/35	397	(400-¾)
CIRCLING **	2900-1 438 (500-1)	2920-1 458 (500-1)	3040-1½ 578 (600-1½)	3040-2 578 (600-2)	3600-3 1138 (1200-3)

ELEV <b>2462</b>	TDZE <b>2423</b>
HIRL Rwy 5-23 TDZL/RCLS Rwy 5	

SPOKANE, WASHINGTON  
Amdt 4 03NOV22

47°37'N-117°39'W

FAIRCHILD AFB (KSKA)

# TACAN RWY 23

NW-1, 14 MAY 2026 to 11 JUN 2026

NW-1, 14 MAY 2026 to 11 JUN 2026