

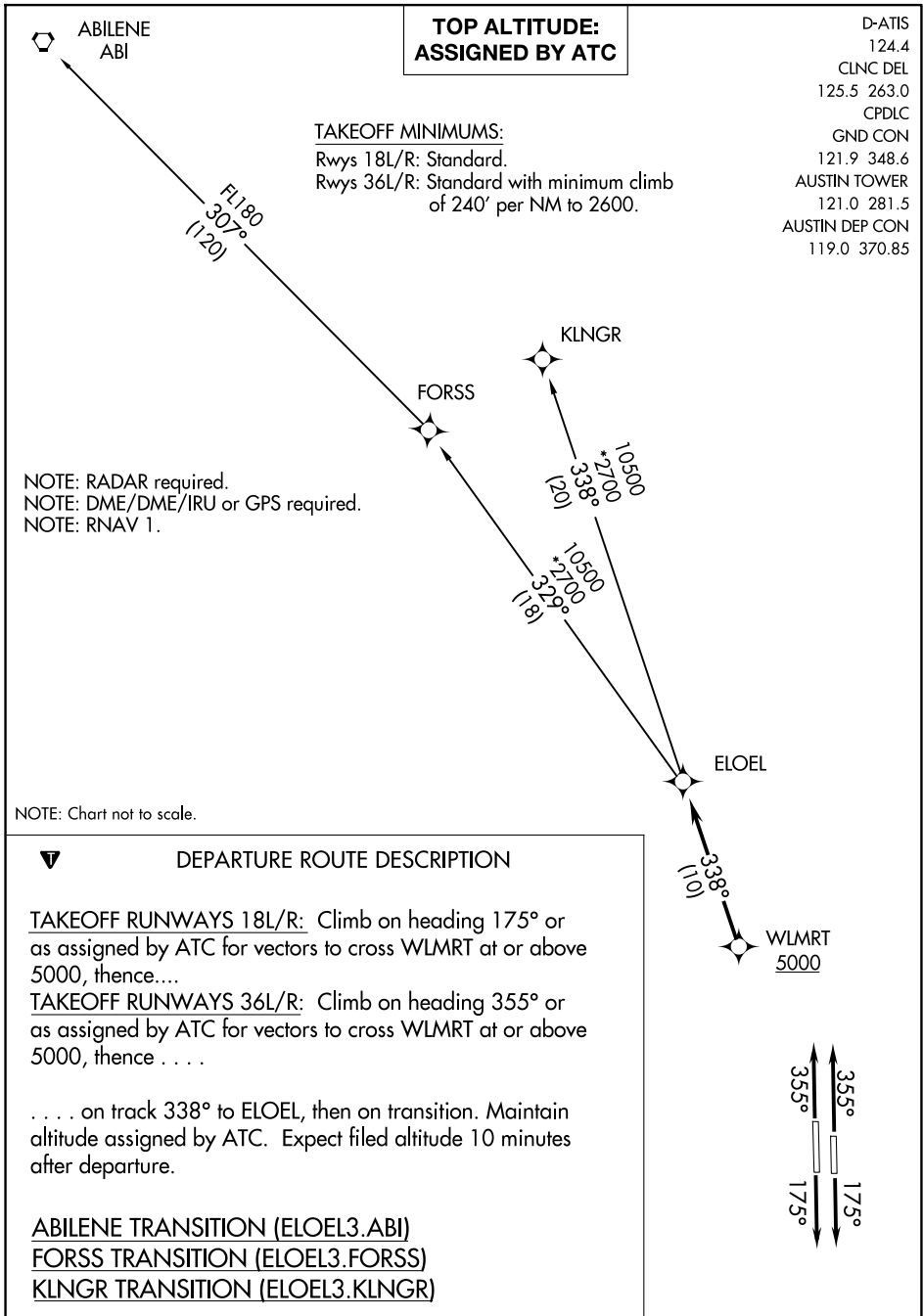
(ELOEL3.ELOEL) 21112

AUSTIN-BERGSTROM INTL (AUS)

# ELOEL THREE DEPARTURE (RNAV)

AL-556 (FAA)

AUSTIN, TEXAS



**TOP ALTITUDE:  
ASSIGNED BY ATC**

TAKEOFF MINIMUMS:  
Rwys 18L/R: Standard.  
Rwys 36L/R: Standard with minimum climb  
of 240' per NM to 2600.

- D-ATIS 124.4
- CLNC DEL 125.5 263.0
- CPDLC
- GND CON 121.9 348.6
- AUSTIN TOWER 121.0 281.5
- AUSTIN DEP CON 119.0 370.85

NOTE: RADAR required.  
NOTE: DME/DME/IRU or GPS required.  
NOTE: RNAV 1.

NOTE: Chart not to scale.

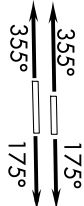
**DEPARTURE ROUTE DESCRIPTION**

TAKEOFF RUNWAYS 18L/R: Climb on heading 175° or as assigned by ATC for vectors to cross WLMRT at or above 5000, thence....

TAKEOFF RUNWAYS 36L/R: Climb on heading 355° or as assigned by ATC for vectors to cross WLMRT at or above 5000, thence . . . .

. . . . on track 338° to ELOEL, then on transition. Maintain altitude assigned by ATC. Expect filed altitude 10 minutes after departure.

ABILENE TRANSITION (ELOEL3.ABI)  
FORSS TRANSITION (ELOEL3.FORSS)  
KLNGR TRANSITION (ELOEL3.KLNGR)



SC-3, 14 MAY 2026 to 11 JUN 2026

SC-3, 14 MAY 2026 to 11 JUN 2026

ELOEL THREE DEPARTURE (RNAV)  
(ELOEL3.ELOEL) 22APR21

AUSTIN, TEXAS  
AUSTIN-BERGSTROM INTL (AUS)