

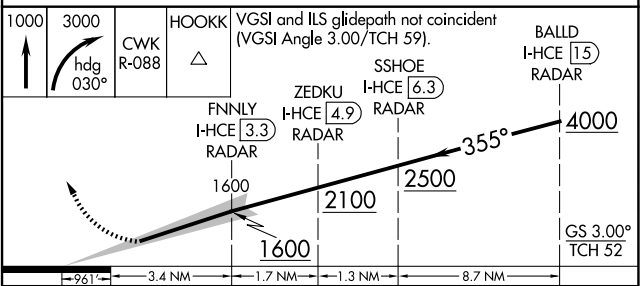
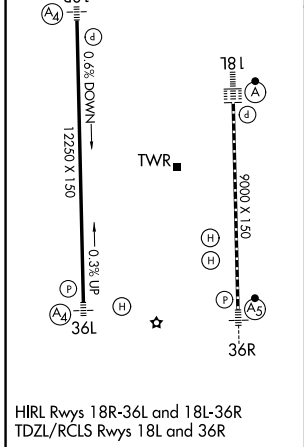
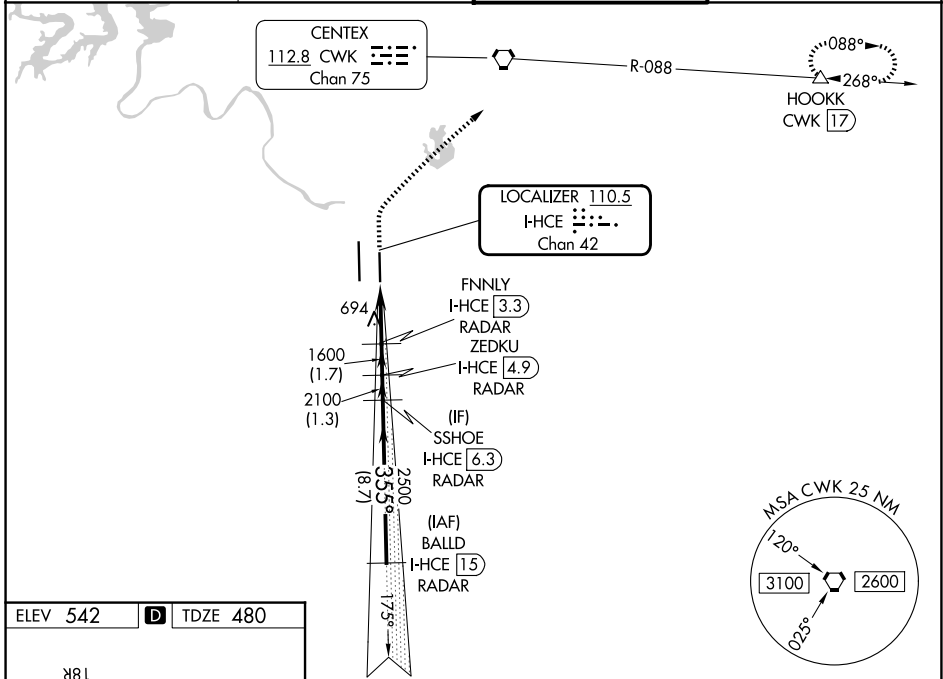
LOC/DME I-HCE <b>110.5</b> Chan <b>42</b>	APP CRS <b>355°</b>	Rwy Ldg <b>9000</b> TDZE <b>480</b> Apt Elev <b>542</b>
---	------------------------	---

# ILS RWY 36R (SA CAT I & II)

AUSTIN-BERGSTROM INTL (AUS)

DME required. RADAR required for procedure entry.	MALSR 	MISSED APPROACH: Climb to 1000 then climbing right turn to 3000 on heading 030° and CWK VORTAC R-088 to HOOKK/CWK 17 DME and hold.
<p>Simultaneous approach authorized.</p> <p>SA CAT I: Requires specific OPSPEC, MSPEC or LOA approval.</p> <p>SA CAT II: Requires specific OPSPEC, MSPEC or LOA approval.</p>		

D-ATIS <b>124.4</b>	AUSTIN APP CON <b>127.225 317.65 (E)</b> <b>120.875 270.25 (S)</b> <b>119.0 370.85 (W)</b>	AUSTIN TOWER <b>121.0 281.5</b>	GND CON <b>121.9 348.6</b>
------------------------	---	------------------------------------	-------------------------------



	961'	3.4 NM	1.7 NM	1.3 NM	C	D
CATEGORY	A	B	C	D		
S-ILS 36R	SA CAT I RA 185/14 150 DA 630					
S-ILS 36R	SA CAT II RA 110/12 100 DA 580					

**SA CATEGORY I & II ILS - SPECIAL AIRCREW & AIRCRAFT CERTIFICATION REQUIRED**