

LOC/DME I-VNK 110.5 Chan 42	APP CRS 175°	Rwy Ldg 9000 TDZE 492 Apt Elev 542
------------------------------------------	------------------------	------------------------------------------------------------------------

ILS or LOC RWY 18L

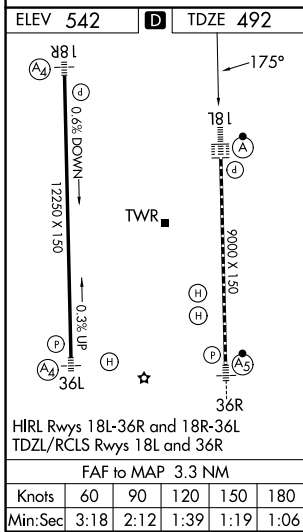
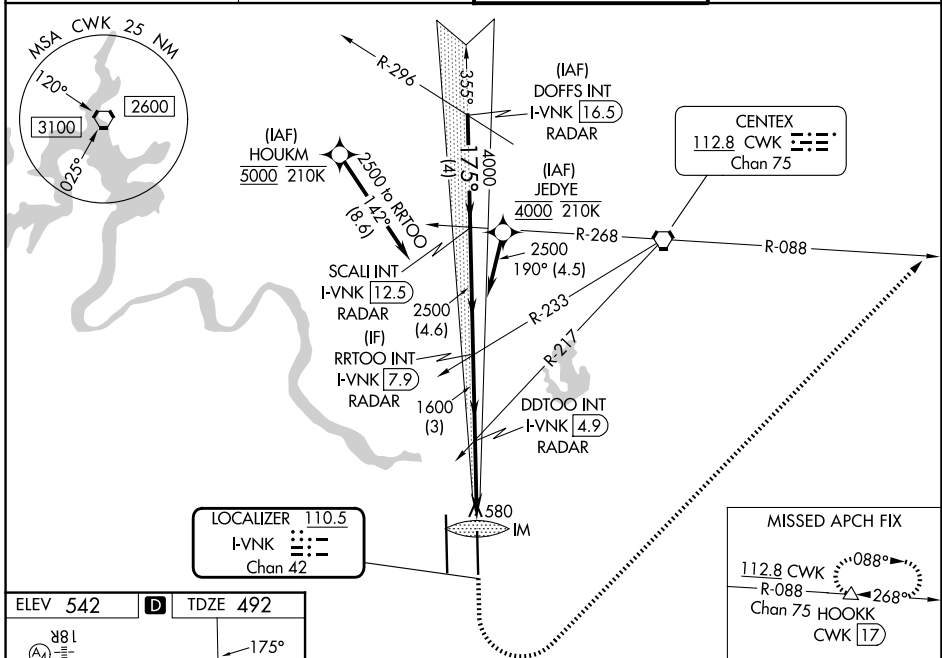
AUSTIN-BERGSTROM INTL (AUS)

RNP APCH-GPS. From HOUKM or JEDYE.
 RADAR required for procedure entry from DOFFS. DME required.
 Simultaneous approach authorized. For inop ALS, increase S-ILS-18L Cat E visibility to RVR 4000, and S-LOC-18L Cats C, D, and E visibility to RVR 5500.



MISSED APPROACH: Climb to 1000 then climbing left turn to 3000 on heading 040° and CWK VORTAC R-088 to HOOKK/CWK 17 DME and hold.

D-ATIS 124.4	AUSTIN APP CON 127.225 317.65 (E) 120.875 270.25 (S) 119.0 370.85 (W)	AUSTIN TOWER 121.0 281.5	GND CON 121.9 348.6
------------------------	-----------------------------------------------------------------------------------------------------	------------------------------------	-------------------------------



VGSI and ILS glidepath not coincident (VGSI Angle 3.00/TCH 74).

DOFFS INT I-VNK 16.5 RADAR	SCALI INT I-VNK 12.5 RADAR	RRTOO INT I-VNK 7.9 RADAR	DDTOO INT I-VNK 4.9 RADAR	I-VNK 2.5	I-VNK 1.6
5000	4000	2500	1600	1600	IM
GS 3.00° TCH 61		↑ hdg 040°			
4 NM		4.6 NM		3 NM	
2.4 NM		0.8 NM		0.1 NM	
CATEGORY	A	B	C	D	E
S-ILS 18L	692/18 200 (200-½)				
S-LOC 18L	840/24	348 (300-½)	840/30	348 (300-¾)	
CIRCLING	1040-1 498 (500-1)	1120-1 578 (600-1)	1200-1¾ 658 (700-1¾)	1200-2 658 (700-2)	NA

SC-3, 14 MAY 2026 to 11 JUN 2026

SC-3, 14 MAY 2026 to 11 JUN 2026