

LOC/DME I-GFQ <b>110.95</b> Chan <b>46(Y)</b>	APP CRS <b>175°</b>	Rwy Ldg <b>12250</b> TDZE <b>542</b> Apt Elev <b>542</b>
---	------------------------	--

# I LS or LOC RWY 18R

AUSTIN-BERGSTROM INTL (AUS)

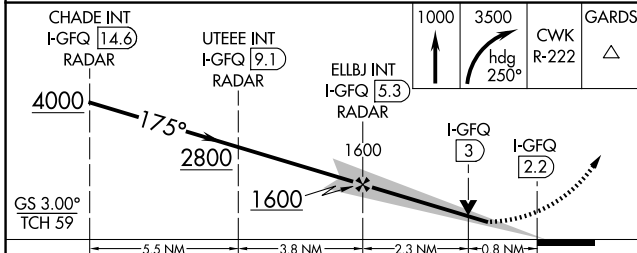
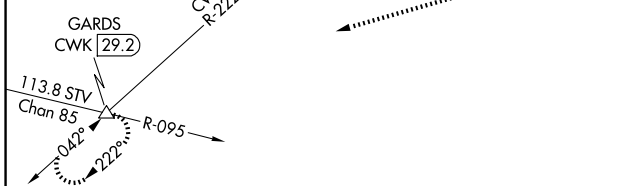
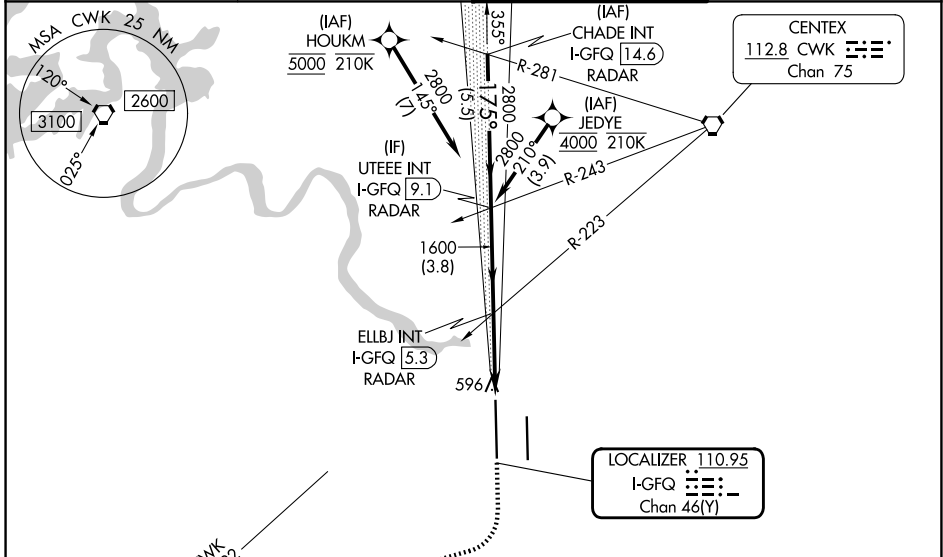
RNAV 1-GPS or RADAR required for procedure entry.  
From HOUKM, JEDYE: RNAV 1-GPS required.

Simultaneous approach authorized. Inop table does not apply to S-ILS 18R. For inop ALS, increase S-LOC-18R Cats C, D and E visibility to RVR 4500.

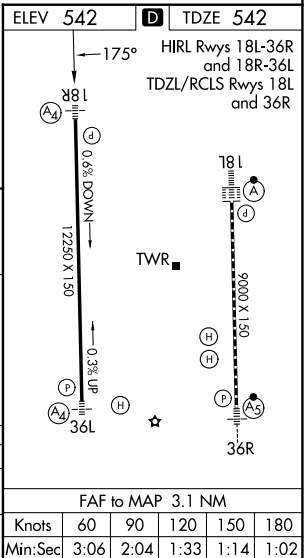
MALS  $\text{A4} \text{---}$

MISSED APPROACH: Climb to 1000 then climbing right turn to 3500 on heading 250° and CWK VORTAC R-222 to GARDS INT/CWK 29.2 DME and hold.

D-ATIS <b>124.4</b>	AUSTIN APP CON <b>127.225 317.65 (E)</b> <b>120.875 270.25 (S)</b> <b>119.0 370.85 (W)</b>	AUSTIN TOWER <b>121.0 281.5</b>	GND CON <b>121.9 348.6</b>
------------------------	---	------------------------------------	-------------------------------



CATEGORY	A	B	C	D	E
S-ILS 18R		742/40	200 (200-¾)		
S-LOC 18R		860/40	318 (400-¾)		



SC-3, 14 MAY 2026 to 11 JUN 2026

SC-3, 14 MAY 2026 to 11 JUN 2026