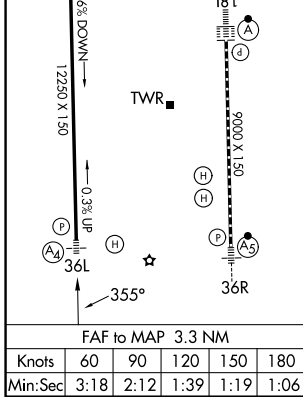
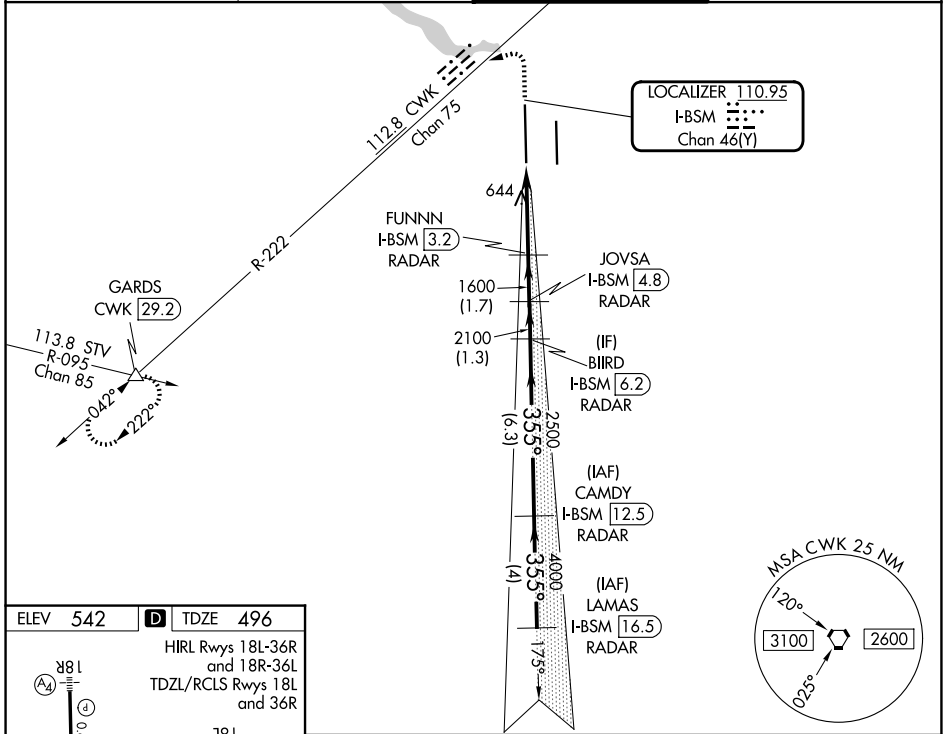


LOC/DME I-BSM 110.95 Chan 46(Y)	APP CRS 355°	Rwy Ldg 12250 TDZE 496 Apt Elev 542
---	------------------------	--

ILS or LOC RWY 36L

AUSTIN-BERGSTROM INTL (AUS)

DME or RADAR required.		MALS	MISSED APPROACH: Climb to 1000 then climbing left turn to 3500 on heading 250° and CWK VORTAC R-222 to GARDS INT/CWK 29.2 DME and hold.
▼ Simultaneous approach authorized. For inop ALS, increase S-LOC 36L Cats C/D/E visibility to RVR 6000. Inop table does not apply to S-ILS 36L all Cats.		 (A4)	
D-ATIS 124.4	AUSTIN APP CON 127.225 317.65 (E) 120.875 270.25 (S) 119.0 370.85 (W)	AUSTIN TOWER 121.0 281.5	GND CON 121.9 348.6



1000	3500	CWK R-222	GARDS	VGSi and ILS glidepath not coincident (VGSi Angle 3.00/TCH 60).		LAMAS I-BSM [16.5] RADAR
↑	hdg 250°			BIIRD I-BSM [6.2] RADAR	CAMDY I-BSM [12.5] RADAR	
		I-BSM DME ANTENNA	FUNNN I-BSM [3.2] RADAR	JOVSA I-BSM [4.8] RADAR		
		I-BSM [0.2]	I-BSM [0.9]	1600	2100	2500
				1600	4000	5000
						GS 3.00° TCH 54
						1.1 NM 2.2 NM 1.7 NM 1.3 NM 6.3 NM 4 NM
CATEGORY	A	B	C	D	E	
S-ILS 36L	696/40 200 (200-¾)					
S-LOC 36L	900/40	404 (400-¾)	900/50 404 (400-1)			

SC-3, 14 MAY 2026 to 11 JUN 2026

SC-3, 14 MAY 2026 to 11 JUN 2026