

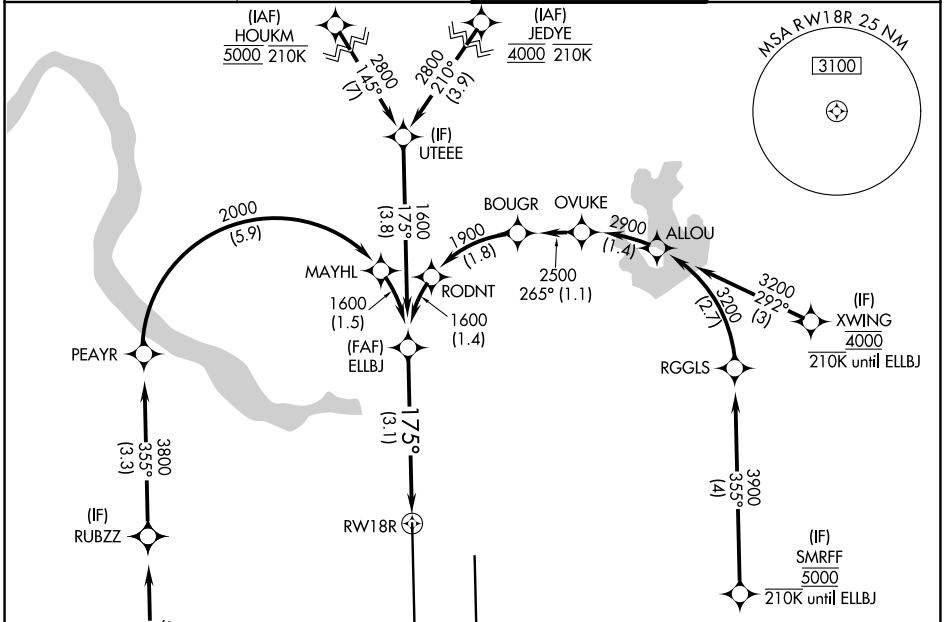
RNAV (RNP) Z RWY 18R

AUSTIN-BERGSTROM INTL (AUS)

APP CRS	Rwy Ldg	12250
175°	TDZE	542
	Apt Elev	542

RNP AR APCH-GPS. RADAR required.	MALS	MISSED APPROACH: Climb to 1000 then climbing right turn to 3500 direct GARDS and hold.
Simultaneous approach authorized. For uncompensated Baro-VNAV systems, procedure NA below -5°C or above 54°C.		

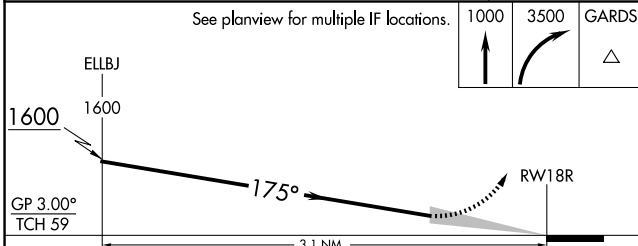
D-ATIS 124.4	AUSTIN APP CON 127.225 317.65 (E) 120.875 270.25 (S) 119.0 370.85 (W)	AUSTIN TOWER 121.0 281.5	GND CON 121.9 348.6
------------------------	---	------------------------------------	-------------------------------



SC-3, 14 MAY 2026 to 11 JUN 2026

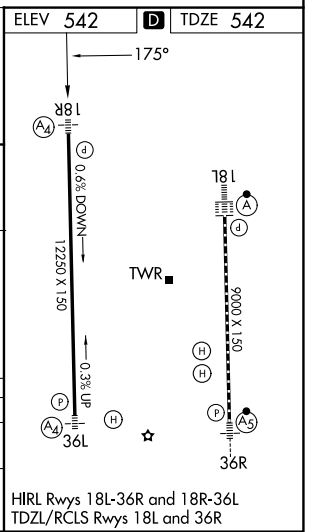
SC-3, 14 MAY 2026 to 11 JUN 2026

MISSED APCH FIX	ELEV 542	D TDZE 542
	GARDS	
	042°	222°
	6 NM	



CATEGORY	A	B	C	D
RNP 0.30 DA		883/40	341 (400-3/4)	

AUTHORIZATION REQUIRED



HIRL Rwy 18L-36R and 18R-36L
TDZL/RCLS Rwy 18L and 36R