



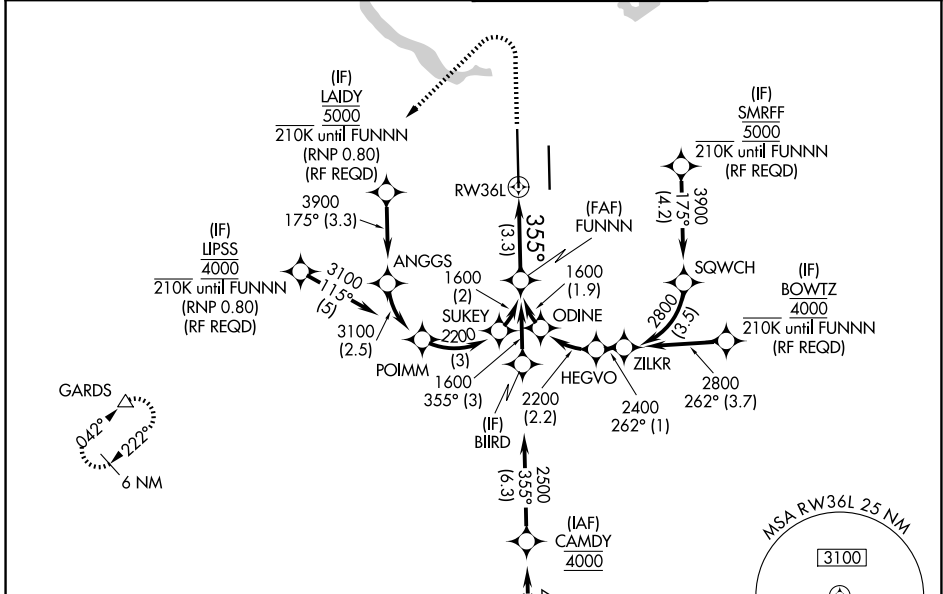
| | | |
|-------------|----------|--------------|
| APP CRS | Rwy Ldg | 12250 |
| 355° | TDZE | 496 |
| | Apt Elev | 542 |

RNAV (RNP) Z RWY 36L

AUSTIN-BERGSTROM INTL (AUS)

| | | |
|---|--|---|
| RNP AR APCH. RADAR required. | MALS  | MISSED APPROACH: Climb to 1700 then climbing left turn to 3500 direct GARDS and hold. |
| <p>▼ Simultaneous approach authorized. For uncompensated Baro-VNAV systems, procedure NA below -5°C or above 54°C. For inop ALS, increase RNP 0.11 all Cats visibility to RVR 4500 and RNP 0.30 all Cats visibility to RVR 5500.</p> |  | |

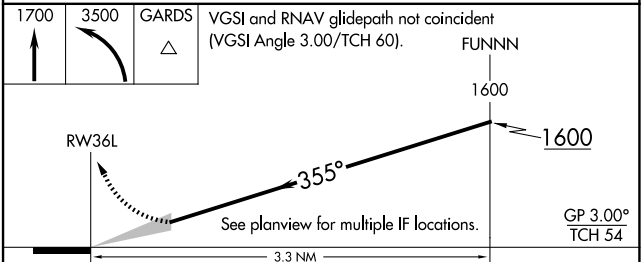
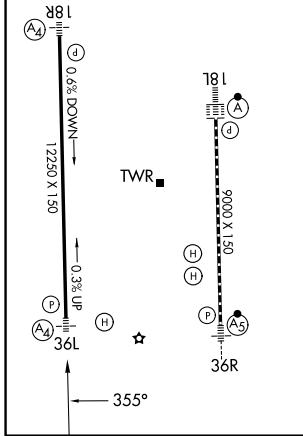
| | | | |
|------------------------|---|------------------------------------|-------------------------------|
| D-ATIS 124.4 | AUSTIN APP CON 127.225 317.65 (E) 120.875 270.25 (S) 119.0 370.85 (W) | AUSTIN TOWER 121.0 281.5 | GND CON 121.9 348.6 |
|------------------------|---|------------------------------------|-------------------------------|



SC-3, 14 MAY 2026 to 11 JUN 2026

SC-3, 14 MAY 2026 to 11 JUN 2026

| | |
|---|-------------------|
| ELEV 542 | D TDZE 496 |
| HIRL Rwy 18L-36R and 18R-36L TDZL/RCLS Rwy 18L and 36R | |



| CATEGORY | A | B | C | D |
|-------------|---|--------|-------------|---|
| RNP 0.11 DA | | 758/40 | 262 (300-¾) | |
| RNP 0.30 DA | | 858/40 | 362 (400-¾) | |

AUTHORIZATION REQUIRED