

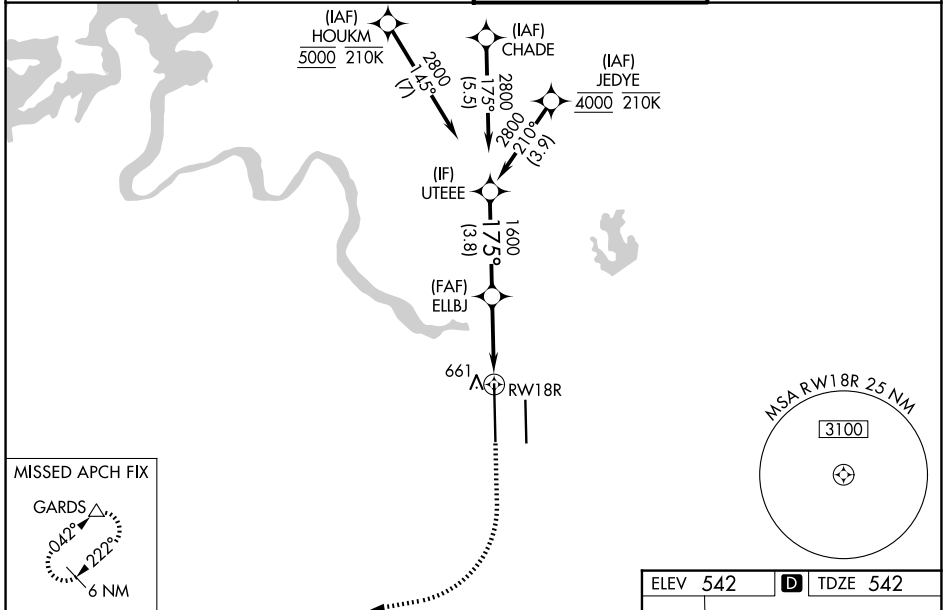
WAAS CH 77530 W18B	APP CRS 175°	Rwy Ldg 12250 TDZE 542 Apt Elev 542
--	------------------------	--

RNAV (GPS) Y RWY 18R

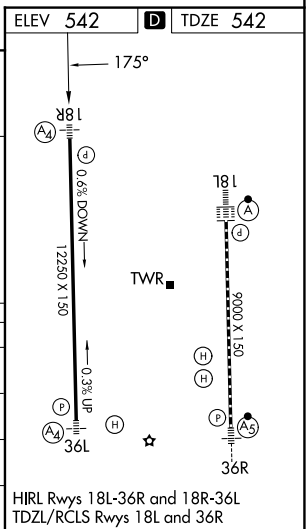
AUSTIN-BERGSTROM INTL (AUS)

RNP APCH-GPS.	MALS	MISSED APPROACH: Climb to 1000 then climbing right turn to 3500 direct GARDS and hold.
<p>Simultaneous approach authorized. LNAV procedure NA during simultaneous operations. For uncompensated Baro-VNAV systems, LNAV/VNAV NA below -5°C or above 54°C. Use of FD or AP required during simultaneous operations. Inop table does not apply to LPV. For inop ALS, increase LNAV/VNAV all Cats visibility to RVR 4500; increase LNAV Cat E visibility to RVR 5500.</p>		

D-ATIS 124.4	AUSTIN APP CON 127.225 317.65 (E) 120.875 270.25 (S) 119.0 370.85 (W)	AUSTIN TOWER 121.0 281.5	GND CON 121.9 348.6
------------------------	---	------------------------------------	-------------------------------



	UTEEE	ELLBJ			
	2800	1600	0.9 NM to RWY 18R		
	GP 3.00°	1600			
	TCH 59				
	3.8 NM	2.2 NM	0.9 NM		
CATEGORY	A	B	C	D	E
LPV DA		742/40	200 (200-¾)		
LNAV/VNAV DA		834/40	292 (300-¾)		
LNAV MDA		900/40	358 (400-¾)		
CIRCLING	1040-1 498 (500-1)	1120-1 578 (600-1)	1200-1¾ 658 (700-1¾)	1200-2 658 (700-2)	NA



SC-3, 14 MAY 2026 to 11 JUN 2026

SC-3, 14 MAY 2026 to 11 JUN 2026