

LOC/DME I-CIC <b>111.3</b> Chan 50	APP CRS <b>131°</b>	Rwy Ldg TDZE <b>240</b> Apt Elev <b>240</b>	<b>6724</b>
--	------------------------	---	-------------

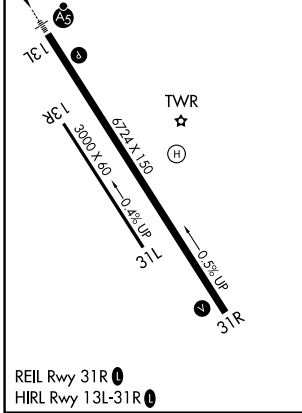
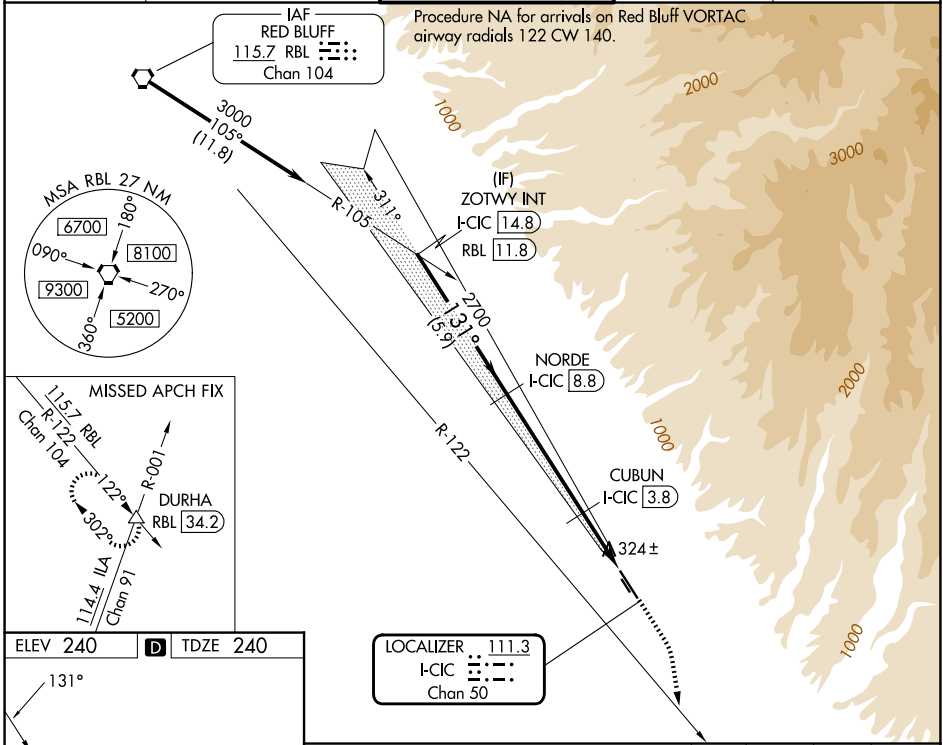
# ILS or LOC RWY 13L

CHICO RGNL (CIC)

DME required.  
 Circling NA east of Rwy 13L/31R.

MAJRS  
 MISSED APPROACH: Climb to 1000 then climbing right turn to 6000 on heading 155° and RBL R-122 to DURHA INT/ RBL 34.2 DME and hold, continue climb-in-hold to 6000.

ATIS <b>119.675</b>	OAKLAND CENTER <b>132.2 350.3</b>	CHICO TOWER ★ <b>121.0 (CTAF) 239.3</b>	GND CON <b>121.9</b>	UNICOM <b>122.95</b>
------------------------	--------------------------------------	--	-------------------------	-------------------------



ZOTWY INT I-CIC 14.8	NORDE I-CIC 8.8	CUBUN I-CIC 3.8	DURHA RBL R-122
3000	2700	1000	6000
131°	2700	*I-CIC 2.2	I-CIC 1.3
*LOC only			
GS 3.00° TCH 52			
5.9 NM	5.1 NM	1.6 NM	0.9 NM
CATEGORY	A	B	C
S-ILS 13L	440-½		200 (200-½)
S-LOC 13L	580-½		340 (400-½)
CIRCLING	640-1 400 (400-1)	700-1 460 (500-1)	700-1½ 460 (500-1½)
			800-2 560 (600-2)

SW-2, 14 MAY 2026 to 11 JUN 2026

SW-2, 14 MAY 2026 to 11 JUN 2026