

LOC/DME I-VIS <b>108.5</b> Chan 22	APP CRS <b>301°</b>	Rwy Ldg TDZE Apt Elev	<b>5635</b> <b>293</b> <b>293</b>
--	------------------------	-----------------------------	---

# ILS or LOC RWY 30

VISALIA MUNI (VIS)

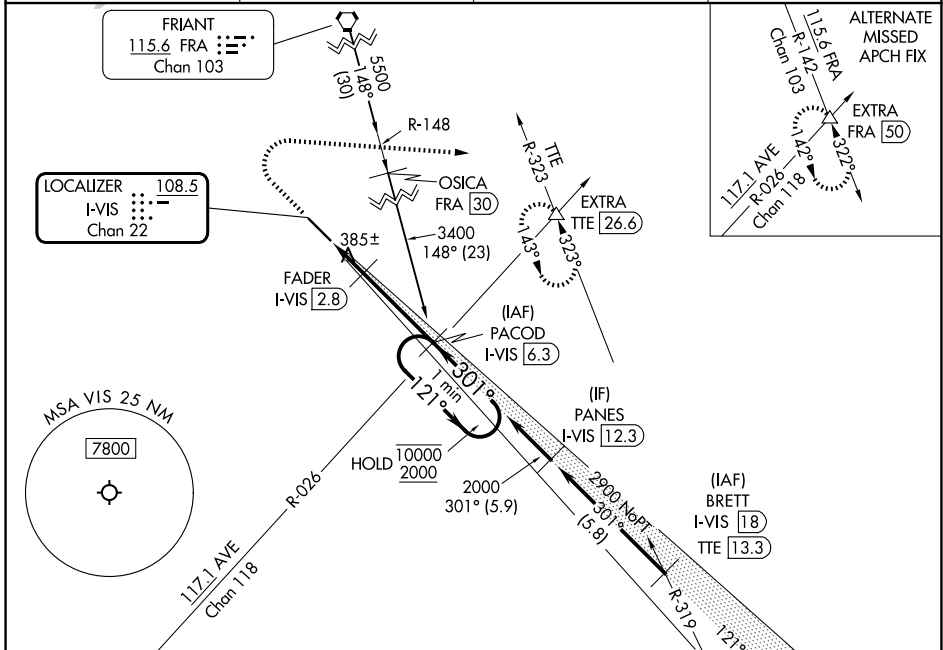
DME required.

**▼** For inop ALS, increase S-LOC 30  
**▲** Cat C/D visibility to 1 SM.

**MALSR**

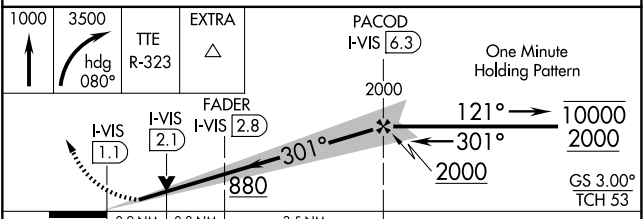
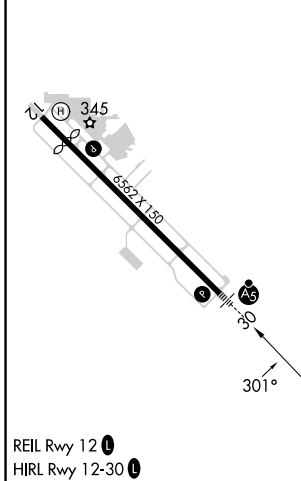
**MISSED APPROACH:** Climb to 1000 then climbing right turn to 3500 on heading 080° and on TTE VOR/DME R-323 to EXTRA INT/TTE 26.6 DME and hold, continue climb-in-hold to 3500.

AWOS-3PT <b>119.925</b>	FRESNO APP CON <b>118.5</b>	CLNC DEL <b>118.5</b>	UNICOM <b>123.05</b> (CTAF) <b>0</b>
----------------------------	--------------------------------	--------------------------	---



ELEV 293	<b>D</b>	TDZE 293
----------	----------	----------

Procedure NA for arrivals at TTE VOR/DME on V165-459 southeast bound.



CATEGORY	A	B	C	D
S-ILS 30	500-½ 207 (300-½)			
S-LOC 30	640-½ 347 (400-½)		640-⅝ 347 (400-⅝)	
CIRCLING	740-1 447 (500-1)	760-1 467 (500-1)	760-1½ 467 (500-1½)	940-2 647 (700-2)