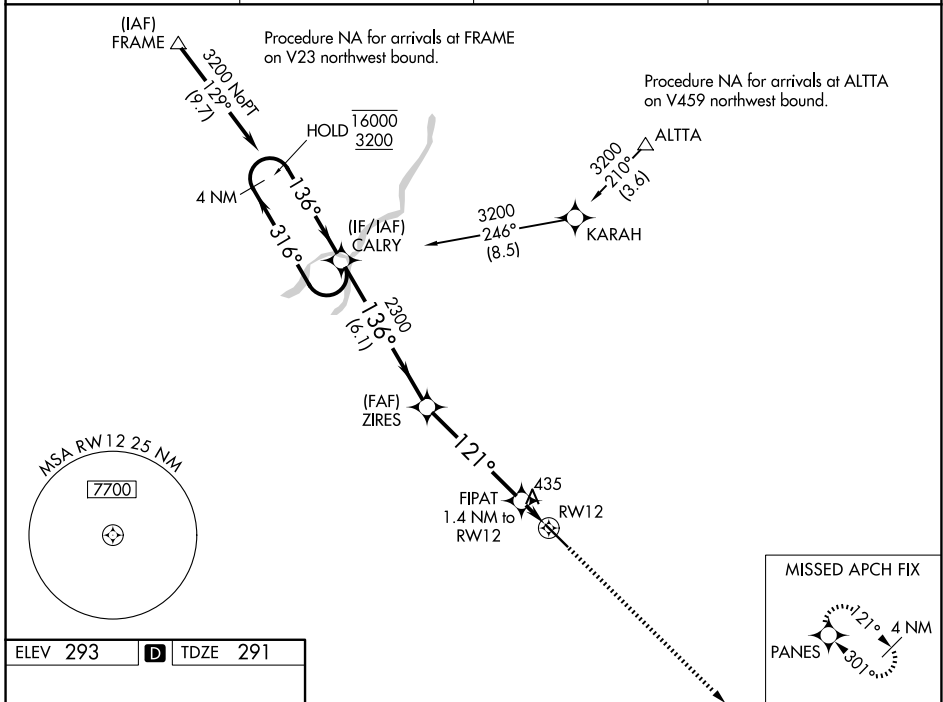


WAAS CH 82423 W12A	APP CRS 121°	Rwy Ldg TDZE Apt Elev	5635 291 293
--	------------------------	-----------------------------	---

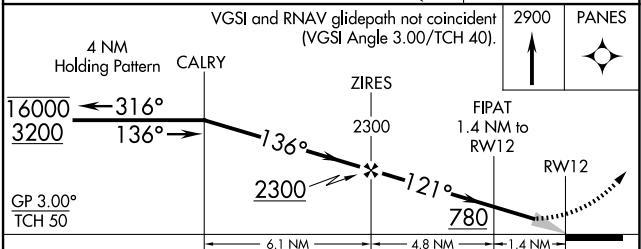
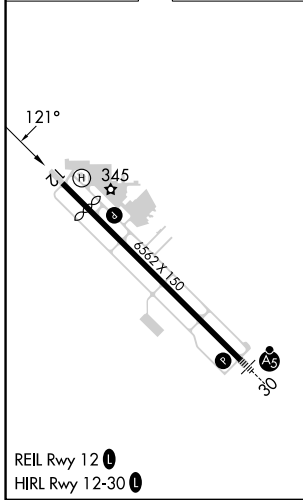
RNAV (GPS) RWY 12

VISALIA MUNI (VIS)

RNP APCH - GPS.		MISSED APPROACH: Climb to 2900 direct PANES and hold.	
<p>▼ For uncompensated Baro-VNAV systems, LNAV/VNAV NA below -15°C or above 54°C.</p> <p>▲</p>			
AWOS-3PT 119.925	FRESNO APP CON 118.5	CINC DEL 118.5	UNICOM 123.05 (CTAF) 0



ELEV 293	D	TDZE 291
----------	----------	----------



CATEGORY	A	B	C	D
LPV DA	541-3/4		250 (300-3/4)	
LNAV/VNAV DA	700-1 1/8		409 (500-1 1/8)	
LNAV MDA	700-1	409 (500-1)	700-1 1/8	409 (500-1 1/8)
CIRCLING	740-1 447 (500-1)	760-1 467 (500-1)	760-1 1/2 467 (500-1 1/2)	940-2 647 (700-2)

SW-2, 14 MAY 2026 to 11 JUN 2026

SW-2, 14 MAY 2026 to 11 JUN 2026