

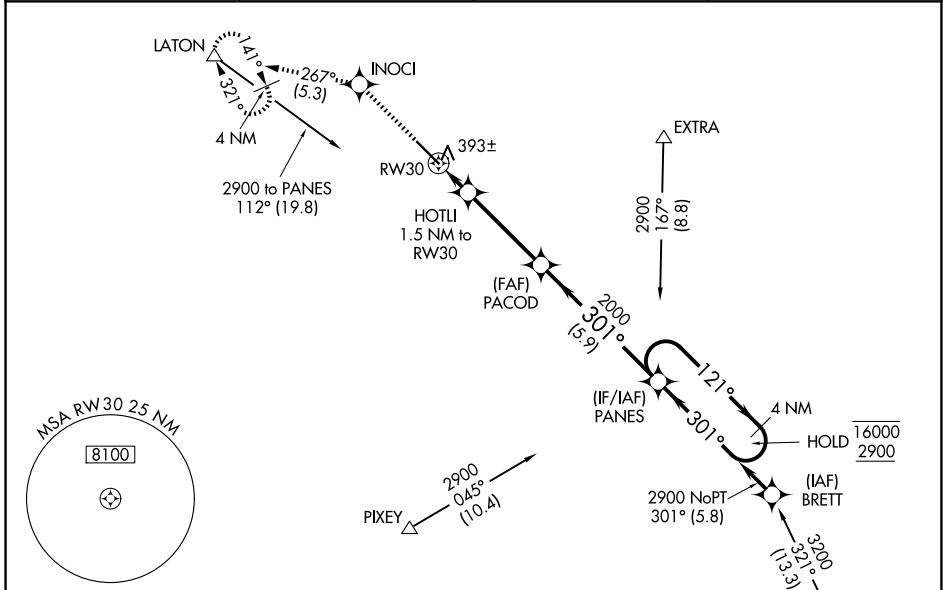
WAAS CH 77623 W30A	APP CRS 301°	Rwy Ldg TDZE 293 Apt Elev 293
--	------------------------	---

RNAV (GPS) RWY 30

VISALIA MUNI (VIS)

RNP APCH - GPS.	MALSR	MISSED APPROACH: Climb to 3000 direct INOCI and on track 267° to LATON and hold, continue climb-in-hold to 3000.
<p>⚠ For uncompensated Baro-VNAV systems, LNAV/VNAV NA below -15°C or above 54°C. For inop ALS, increase LNAV/VNAV all Cats visibility to 1 SM, and LNAV Cats C/D to 1 SM.</p>		

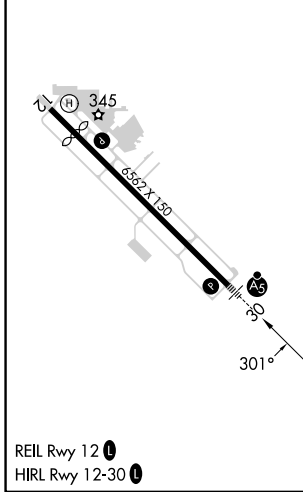
AWOS-3PT 119.925	FRESNO APP CON 118.5	CLNC DEL 118.5	UNICOM 123.05 (CTAF) 📻
----------------------------	--------------------------------	--------------------------	---



SW-2, 14 MAY 2026 to 11 JUN 2026

SW-2, 14 MAY 2026 to 11 JUN 2026

ELEV 293	D	TDZE 293
----------	----------	----------



3000	INOCI	LATON	PANES	4 NM Holding Pattern
↑	✦	tr 267°	△	
	HOTLI 1.5 NM to RW30	PACOD 2000	PANES 2000	
	820	301°	121°	16000
	1.5 NM	3.7 NM	5.9 NM	2900
				GP 3.00°
				TCH 53
CATEGORY	A	B	C	D
LPV DA		500-½	207 (300-½)	
LNAV/VNAV DA		656-⅝	363 (400-⅝)	
LNAV MDA	660-½	367 (400-½)	660-⅝	367 (400-⅝)
CIRCLING	740-1 447 (500-1)	760-1 467 (500-1)	760-1½ 467 (500-1½)	940-2 647 (700-2)