

| | | | |
|--|------------------------|---|-------------|
| WAAS CH 82101 W05A | APP CRS 049° | Rwy Ldg TDZE 12 Apt Elev 13 | 5580 |
|--|------------------------|---|-------------|

RNAV (GPS) RWY 5

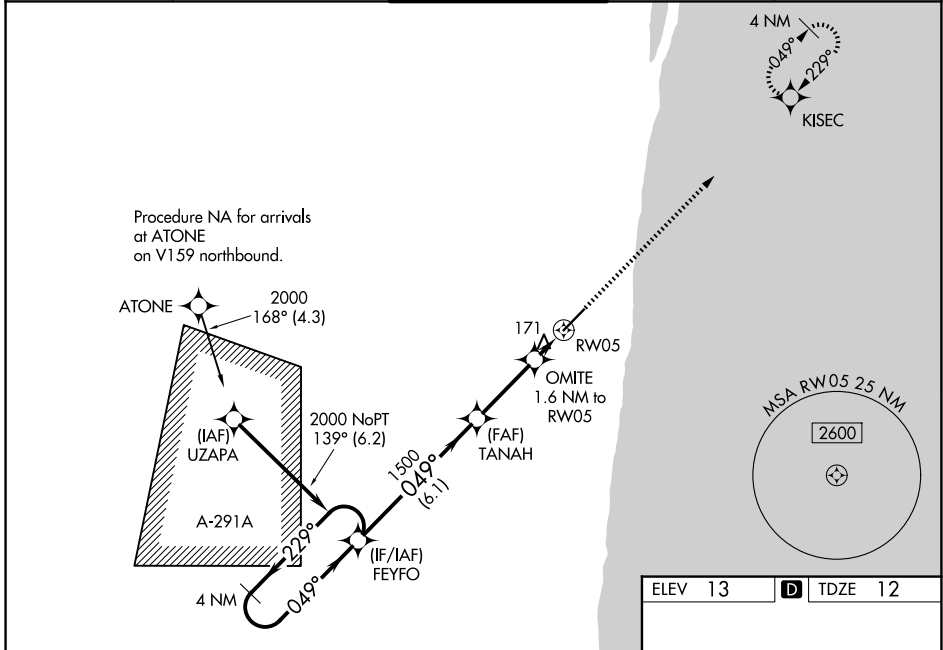
BOCA RATON (BCT)

RNP APCH-GPS.

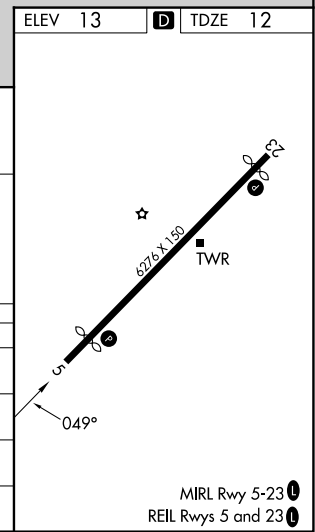
▼ Baro-VNAV NA when using Palm Beach Intl altimeter setting. For uncompensated Baro-VNAV systems, LNAV/VNAV NA below -15°C or above 54°C. When local altimeter setting not received, use Palm Beach Intl altimeter setting: increase LPV DA to 326 feet; increase LNAV/VNAV DA to 501 feet; increase all MDAs 60 feet and visibility LNAV Cats C and D 1/4 SM and Circling Cats C and D 1/4 SM. In minimum visibility conditions bright lights on highway 1/4 mile north of airport may be mistaken for runway lights. Rwy 3 helicopter visibility reduction below 3/4 SM NA.

MISSED APPROACH: Climb to 2000 direct KISEC and hold.

| | | | | |
|--------------------------|---|--|-------------------------|----------------------|
| D-ATIS 121.125 | PALM BEACH APP CON 127.35 343.6 | BOCA RATON TOWER ★ 118.425 (CTAF) 0 | GND CON 121.8 | GCO 127.35 |
|--------------------------|---|--|-------------------------|----------------------|



| | | | | | |
|----------------------|-------|--|------------------------------|------------------------------|-------|
| 4 NM Holding Pattern | | VGSI and RNAV glidepath not coincident (VGSI Angle 3.25/TCH 46). | | 2000 | KISEC |
| ← 229° / 049° → | | FEYFO | | ↑ | ✧ |
| 2000 | | TANAH 1500 | | OMITE 1.6 NM to RW05 | |
| GP 3.00° / TCH 40 | | 1500 | | RW05 | |
| | | 6.1 NM | | 3 NM | |
| | | 560 | | 1.6 NM | |
| CATEGORY | A | B | C | D | |
| LPV DA | | 283-7/8 | 271 (300-7/8) | | |
| LNAV/VNAV DA | | 458-13/8 | 446 (500-13/8) | | |
| LNAV MDA | 440-1 | 428 (500-1) | 440-1 1/4 | 428 (500-1 1/4) | |
| CIRCLING | 680-1 | 667 (700-1) | 680-1 1/4 667 (700-1 1/4) | 880-2 3/4 867 (900-2 3/4) | |



SE-3, 14 MAY 2026 to 11 JUN 2026

SE-3, 14 MAY 2026 to 11 JUN 2026