

CAMP SPRINGS, MARYLAND

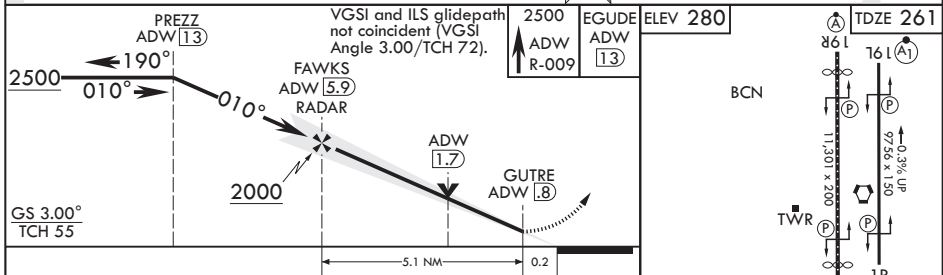
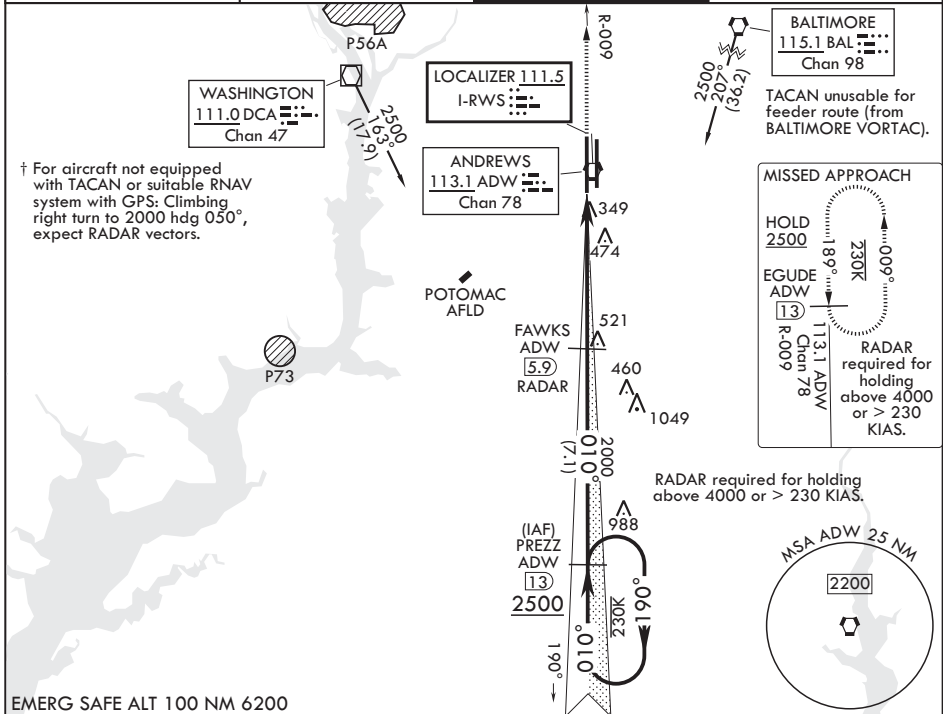
ILS or LOC RWY 1L

LOC I-RWS 111.5	APCH CRS 010°	Rwy Idg TDZE Arpt Elev	10,310 261 280
---------------------------	-------------------------	------------------------------	---

(USAF) JOINT BASE ANDREWS (ANDREWS AFB) (KADW)

RADAR or DME required		ALSIF-2	† MISSED APPROACH: Climbing to 2500, intercept ADW VORTAC R-009 to EGUDE and hold.
<p>▼ * When ALS inop increase RVR to 40, vis to 3/4 mile. When TDZL/CL inop, increase RVR to 24. ** When ALS inop, increase CAT AB RVR to 55, vis to 1 mile, CAT CDE RVR to 60, vis to 1 1/8 miles. *** Circling not authorized W of Rwy 1L-19R.</p>			

ATIS 133.675 251.05	POTOMAC APP CON 128.0 335.5	TOWER 118.4 349.0	GND CON 121.8 275.8
-------------------------------	---------------------------------------	-----------------------------	-------------------------------



CATEGORY	A	B	C	D	E	HIRL all rws TDZL/CL Rws 1L and 19R
S-ILS 1L*	461/18		200	(200-½)		
S-LOC 1L**	680/24	419 (400-½)	680/40	419	(400-¾)	
CIRCLING***	780-1	500 (500-1)	780-1½ 500 (500-1½)	840-2	560 (600-2)	

FAF to MAP 5.1 NM					
Knots	60	90	120	150	180
Min:Sec	5:06	3:24	2:33	2:02	1:42

CAMP SPRINGS, MARYLAND

38°49'N - 76°52'W JOINT BASE ANDREWS (ANDREWS AFB) (KADW)

Amdt 7 06OCT22

ILS or LOC RWY 1L

NE-3, 14 MAY 2026 to 11 JUN 2026

NE-3, 14 MAY 2026 to 11 JUN 2026