

25219

JEFNSN TWO DEPARTURE (RNAV) (JEFNSN2.JEFNSN)

JOINT BASE ANDREWS (ANDREWS AFB) (KADW)
CAMP SPRINGS, MARYLAND

ATIS 133.675 251.05

RNAV1-GPS

[USAF]

TOP ALTITUDE:

RADAR required

3000

GND CON
121.8 275.8

ANDREWS TOWER

118.4 349.0

POTOMAC DEP CON
(E) 125.65 348.725

(W) 118.95 257.2

Max 250 KIAS until JEFNSN

Prohibited (P56) 1.5NM north of
DCA avoid surface to FL800.



P568



RONALD REAGAN
WASHINGTON INTL

FLMOR
3000

271°
(111)

800

010°
(2.6)

POLKK

230°
(8.4)

LINCN

313°
(9.2)

TURBOJETS ONLY

204°
(12.9)

JEFNSN
250K

288°
(13.7)

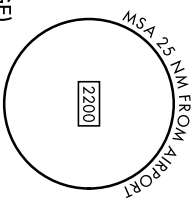
NIKLE

274°
(1.3)

TYLER

257°
(2.4)

218°



(Page 1 of 2)

(TRANSITIONS CONTINUED ON THE FOLLOWING PAGE)

DEPARTURE ROUTE DESCRIPTION

▶ TAKEOFF RWY 1L/R: Climb on heading 010° to 800, then climbing left turn to 3000 direct FLMOR. Then via depicted route to JEFNSN, hence...

TAKEOFF RWY 19L/R: Climb direct TYLER then via depicted route to JEFNSN, hence...

... on assigned transition. Maintain 3000, expect further clearance to filed alt within ten (10) minutes after departure.

FLASK TRANSITION (JEFNSN2.FLASK)

GLANC TRANSITION (JEFNSN2.GLANC)

MAULS TRANSITION (JEFNSN2.MAULS)

MELTN TRANSITION (JEFNSN2.MELTN)

RRSIN TRANSITION (JEFNSN2.RRSIN)

JEFNSN TWO DEPARTURE (RNAV) (JEFNSN2.JEFNSN)

Orig 31OCT24

CAMP SPRINGS, MARYLAND
JOINT BASE ANDREWS (ANDREWS AFB) (KADW)

25219

JEFNSN TWO DEPARTURE (RNAV) (JEFNSN2.JEFNSN)

JOINT BASE ANDREWS (ANDREWS AFB) (KADW)
CAMP SPRINGS, MARYLAND

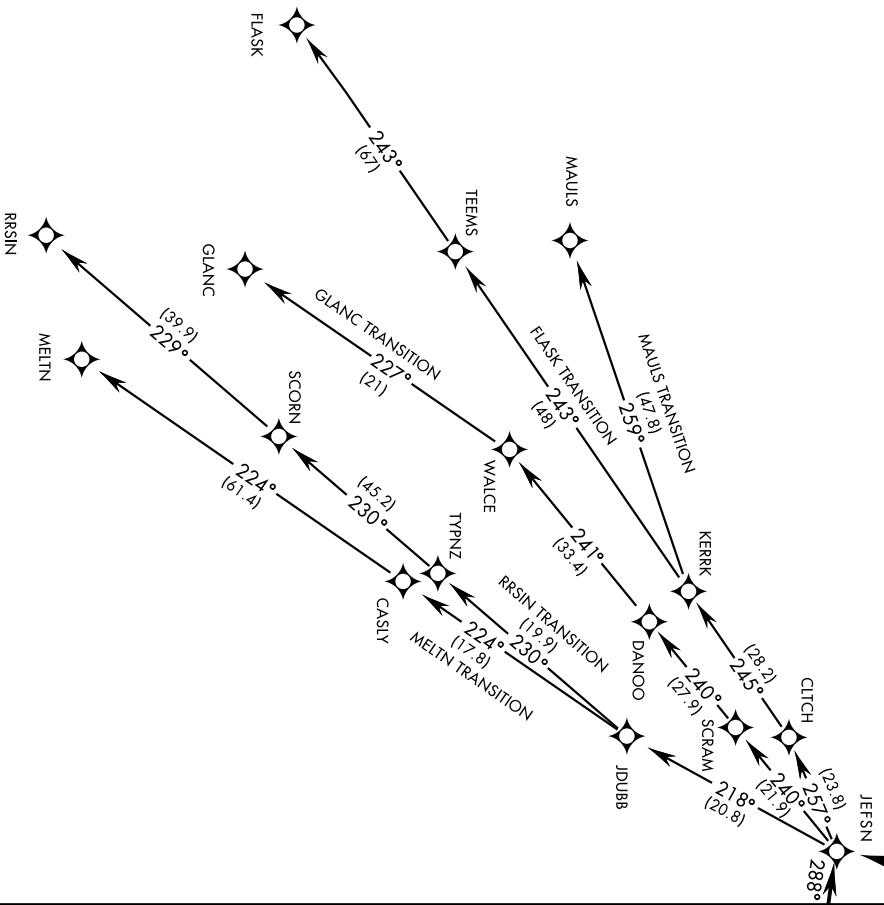
TOP ALTITUDE:

3000

RNAV-GPS

RADAR required

[USAF]



NE-3, 14 MAY 2026 to 11 JUN 2026

(Page 2 of 2)

NOTE: Chart not to scale

TURBOJET ONLY

JEFNSN TWO DEPARTURE (RNAV) (JEFNSN2.JEFNSN)

Orig 31 OCT 24

CAMP SPRINGS, MARYLAND
JOINT BASE ANDREWS (ANDREWS AFB) (KADW)