

LINCN TWO DEPARTURE (RNAV) (LINCN2.LINCN)

CAMP SPRINGS, MARYLAND

ATIS 133.675 251.05
 CPDLC
 GND CON
 121.8 275.8
 ANDREWS TOWER
 118.4 349.0
 POTOMAC DEP CON
 (E) 125.65 348.725
 (W) 118.95 257.2

RNAV1-GPS
 RADAR required

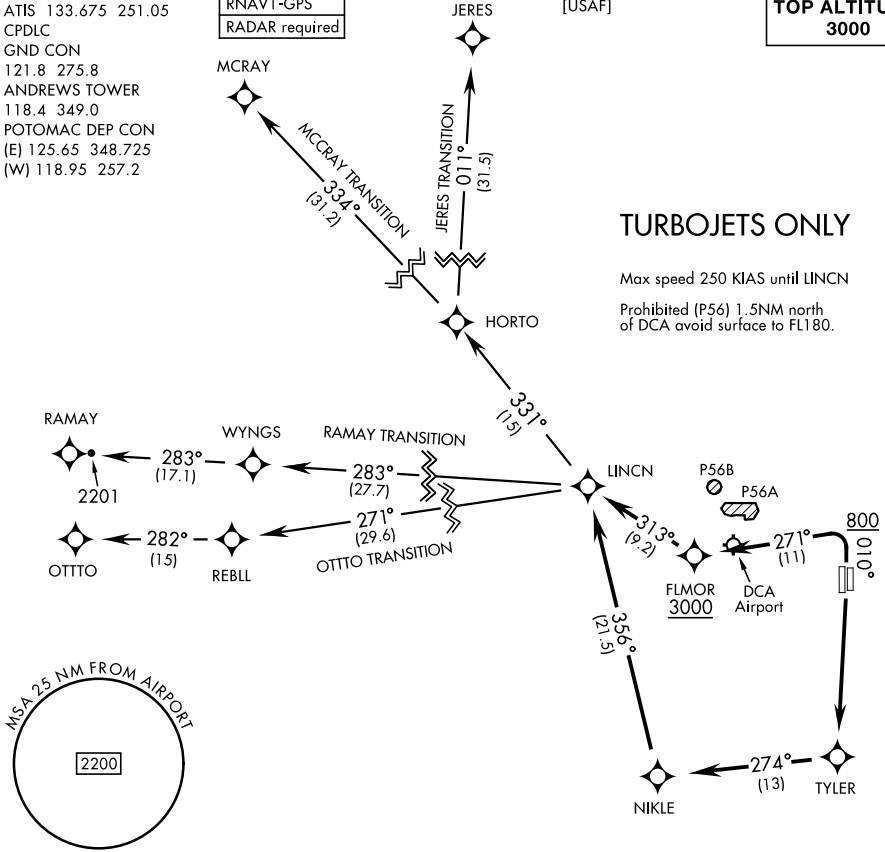
[USAF]

**TOP ALTITUDE:
3000**

TURBOJETTS ONLY

Max speed 250 KIAS until LINCN

Prohibited (P56) 1.5NM north of DCA avoid surface to FL180.



NE-3, 14 MAY 2026 to 11 JUN 2026

NE-3, 14 MAY 2026 to 11 JUN 2026

DEPARTURE ROUTE DESCRIPTION

TAKEOFF RWY 01L/R: Climb heading 010° to 800, then climbing left turn to 3000 direct FLMOR. Then via depicted route to LINCN, thence...

TAKEOFF RWY 19L/R: Climb direct TYLER then via depicted route to LINCN, thence...

...on assigned transition. Maintain 3000, expect further clearance to filed alt within ten (10) minutes after departure.

JERES TRANSITION (LINCN2.JERES)

MCCRAY TRANSITION (LINCN2.MCCRAY)

OTTO TRANSITION (LINCN2.OTTO)

RAMAY TRANSITION (LINCN2.RAMAY)

LINCN TWO DEPARTURE (RNAV) (LINCN2.LINCN)

CAMP SPRINGS, MARYLAND