

CAMP SPRINGS, MARYLAND

RNAV (GPS) RWY 1R

(USAF) JOINT BASE ANDREWS (ANDREWS AFB) (KADW)

WAAS CH 52206 W01B	APCH CRS 010°	Rwy ldg TDZE 265 Arprt Elev 280
--------------------------	------------------	---------------------------------------

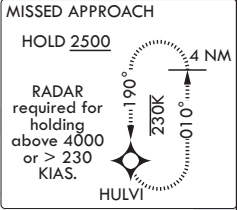
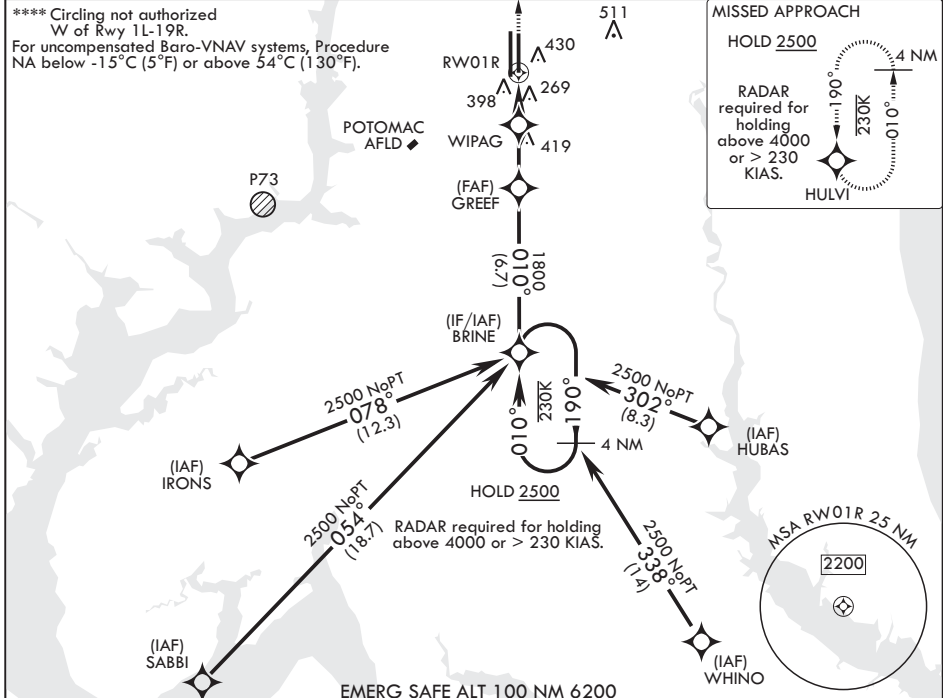
DME/DME RNP-0.3 NA

▼ * When ALS inop, increase RVR to 40, vis to 3/4 mile.
 ** When ALS inop, increase RVR to 60, vis to 1 1/8 miles.
 *** When ALS inop, increase CAT AB RVR to 55, vis to 1 mile;
 CAT CDE RVR to 60, vis to 1 1/8 miles.

ALSF-1 MISSED APPROACH: Climb to 2500 direct HULVI and hold.

ATIS 133.675 251.05	POTOMAC APP CON 128.0 335.5	TOWER 118.4 349.0	GND CON 121.8 275.8
------------------------	--------------------------------	----------------------	------------------------

**** Circling not authorized W of Rwy 1L-19R.
 For uncompensated Baro-VNAV systems, Procedure NA below -15°C (5°F) or above 54°C (130°F).



NE-3, 14 MAY 2026 to 11 JUN 2026

NE-3, 14 MAY 2026 to 11 JUN 2026

4 NM Holding Pattern 2500 ← 190° 010° →	BRINE 010°	GREEF 1800	WIPAG 960	1.1 NM to RWY 1R	2500 HULVI ELEV 280	TDZE 265
GP 3.00° TCH 47					BCN	
			2.6 NM	2.1 NM	TWR	
CATEGORY	A	B	C	D	E	
LPV DA*		465/24	200	(200-½)		
LNAV/VNAV DA**		660/35	395	(400-%)		
LNAV MDA***	660/24	395 (400-½)	660/35	395 (400-%)		
CIRCLING****	780-1	500 (500-1)	780-1½ 500 (500-1½)	840-2	560 (600-2)	
						HIRL all rwys TDZL/CL Rwys 1L and 19R

CAMP SPRINGS, MARYLAND

38°49'N - 76°52'W JOINT BASE ANDREWS (ANDREWS AFB) (KADW)

Amdt 3 18MAY23

RNAV (GPS) RWY 1R