

CAMP SPRINGS, MARYLAND

RNAV (RNP) Y RWY 1L

APCH CRS	Rwy Idg	10,310
010°	TDZE	261
	Arprt Elev	280

(USAF) JOINT BASE ANDREWS (ANDREWS AFB) (KADW)

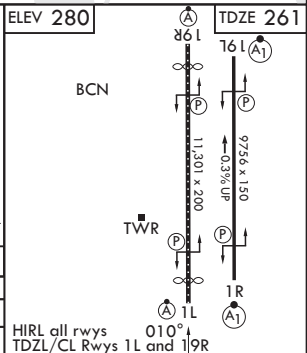
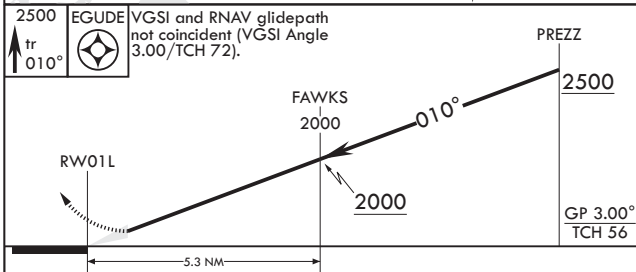
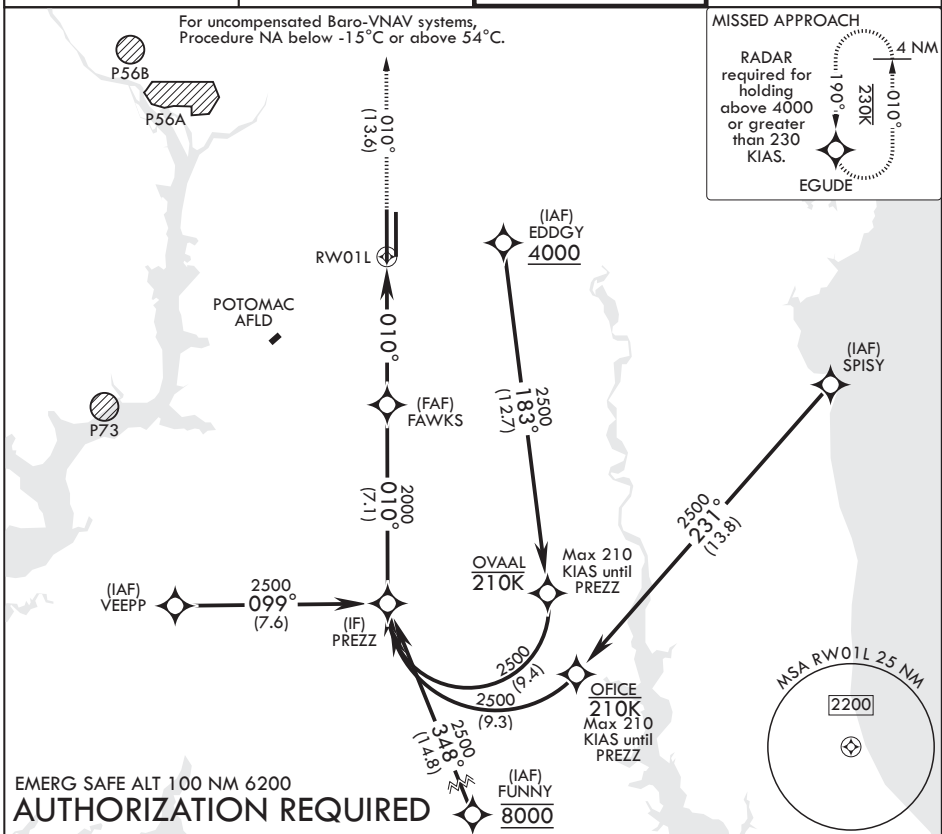
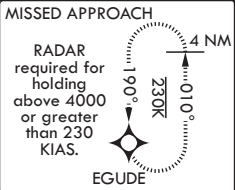
RNP AR APCH. From SPISY, EDDGY: RF.

ALSIF-2 MISSED APPROACH: Climb to 2500 on track 010° to EGUDE and hold.

* When ALS inop, increase RVR to 55, vis to 1 mile.
 ** When ALS inop, increase vis to 1 3/8 miles.

ATIS 133.675 251.05	POTOMAC APP CON 128.0 335.5	TOWER 118.4 349.0	GND CON 121.8 275.8
------------------------	--------------------------------	----------------------	------------------------

For uncompensated Baro-VNAV systems,
 Procedure NA below -15°C or above 54°C.



CATEGORY	A	B	C	D
RNP 0.15 DA*	641/35	380	(400-5%)	
RNP 0.30 DA**	717/45	456	(500-7%)	

HIRL all rwwys
 TDZL/CL Rwwys 1L and 19R

CAMP SPRINGS, MARYLAND

38°49'N - 76°52'W JOINT BASE ANDREWS (ANDREWS AFB) (KADW)

Amdt 2 18MAY23

RNAV (RNP) Y RWY 1L

NE-3, 14 MAY 2026 to 11 JUN 2026

NE-3, 14 MAY 2026 to 11 JUN 2026