

CAMP SPRINGS, MARYLAND

TACAN RWY 19L

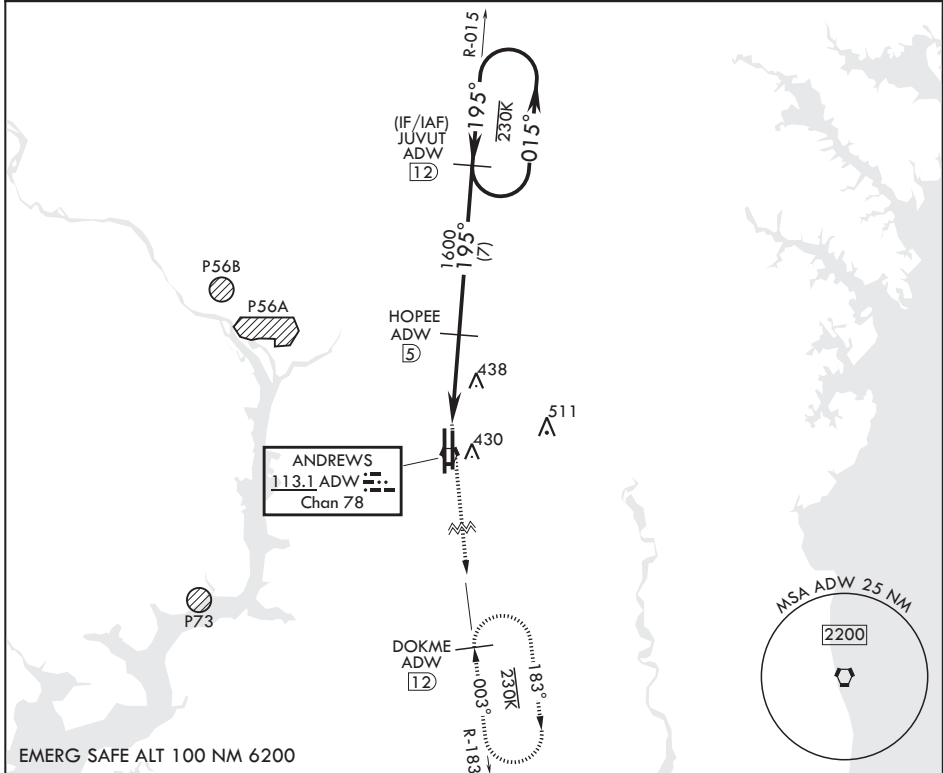
VORTAC ADW 113.1 Chan 78	APCH CRS 195°	Rwy ldg TDZE 279	Arprt Elev 280
--------------------------------	------------------	---------------------	-------------------

(USAF) JOINT BASE ANDREWS (ANDREWS AFB) (KADW)

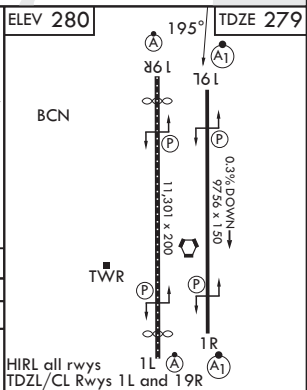
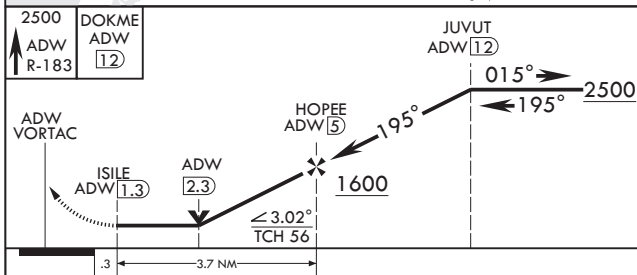
RADAR required	ALSF-1 A1	MISSED APPROACH: Climbing to 2500 via ADW VORTAC R-183 to DOKME and hold.
----------------	--------------	---

* When ALS inop, increase CAT AB RVR to 55, vis to 1 mile, CAT CDE vis to 1 3/8 miles.
** Circling not authorized W of Rwy 1L-19R.

ATIS 133.675 251.05	POTOMAC APP CON 128.0 335.5	TOWER 118.4 349.0	GND CON 121.8 275.8
------------------------	--------------------------------	----------------------	------------------------



EMERG SAFE ALT 100 NM 6200



CATEGORY	A	B	C	D	E
S-19L*	740/24	461 (500-½)	740/50	461	(500-1)
CIRCLING**	780-1	501 (600-1)	780-1½ 501 (600-1½)	840-2	561 (600-2)

CAMP SPRINGS, MARYLAND

38°49'N - 76°52'W JOINT BASE ANDREWS (ANDREWS AFB) (KADW)

Amdt 3 18MAY23

TACAN RWY 19L

NE-3, 14 MAY 2026 to 11 JUN 2026

NE-3, 14 MAY 2026 to 11 JUN 2026

HIRL all rwys
TDZL/CL Rws 1L and 19R