

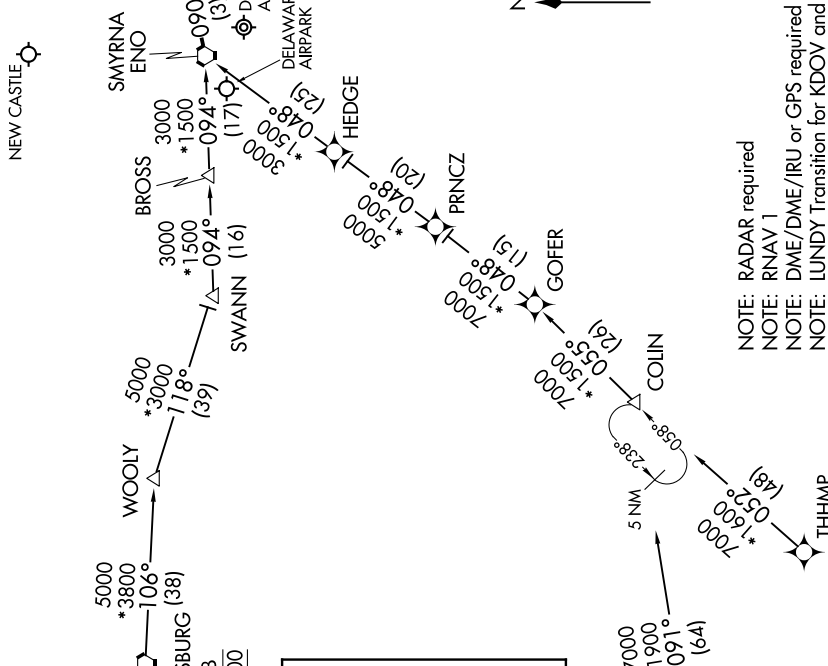
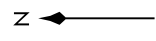
# ARLFT TWO ARRIVAL (RNAV)

DOVER/CHESWOLD, DELAWARE

DOVER APP CON  
132.425 257.875  
33N AWOS-3  
120.125  
IIG ATIS  
123.95  
KDOV D-ATIS  
127.825 273.5

NEW CASTLE

SMYRNA ENO  
3000  
\*1500  
094°  
ARLFT  
090°  
DOVER AFB  
DELAWARE AIRPARK  
LDG 33N, KDOV and KILG



- NOTE: RADAR required
- NOTE: RNAV 1
- NOTE: DME/DME/IRU or GPS required
- NOTE: LUNDDY Transition for KDOV and 33N arrivals only
- NOTE: BUBBI Transition ATC assigned only

**BUBBI TRANSITION (BUBBI.ARLFT2)**  
**LUNDDY TRANSITION (LUNDDY.ARLFT2)**  
**MAULS TRANSITION (MAULS.ARLFT2)**  
**THHMP TRANSITION (THHMP.ARLFT2)**

**LANDING KDOV/33N/KILG:** From ENO VORTAC on track 090° to ARLFT, then on heading 090° or as assigned by ATC. Expect RADAR vectors to final approach course.

NE-3, 14 MAY 2026 to 11 JUN 2026

NE-3, 14 MAY 2026 to 11 JUN 2026

# ARLFT TWO ARRIVAL (RNAV)

DOVER/CHESWOLD, DELAWARE

NOTE: Chart not to scale.