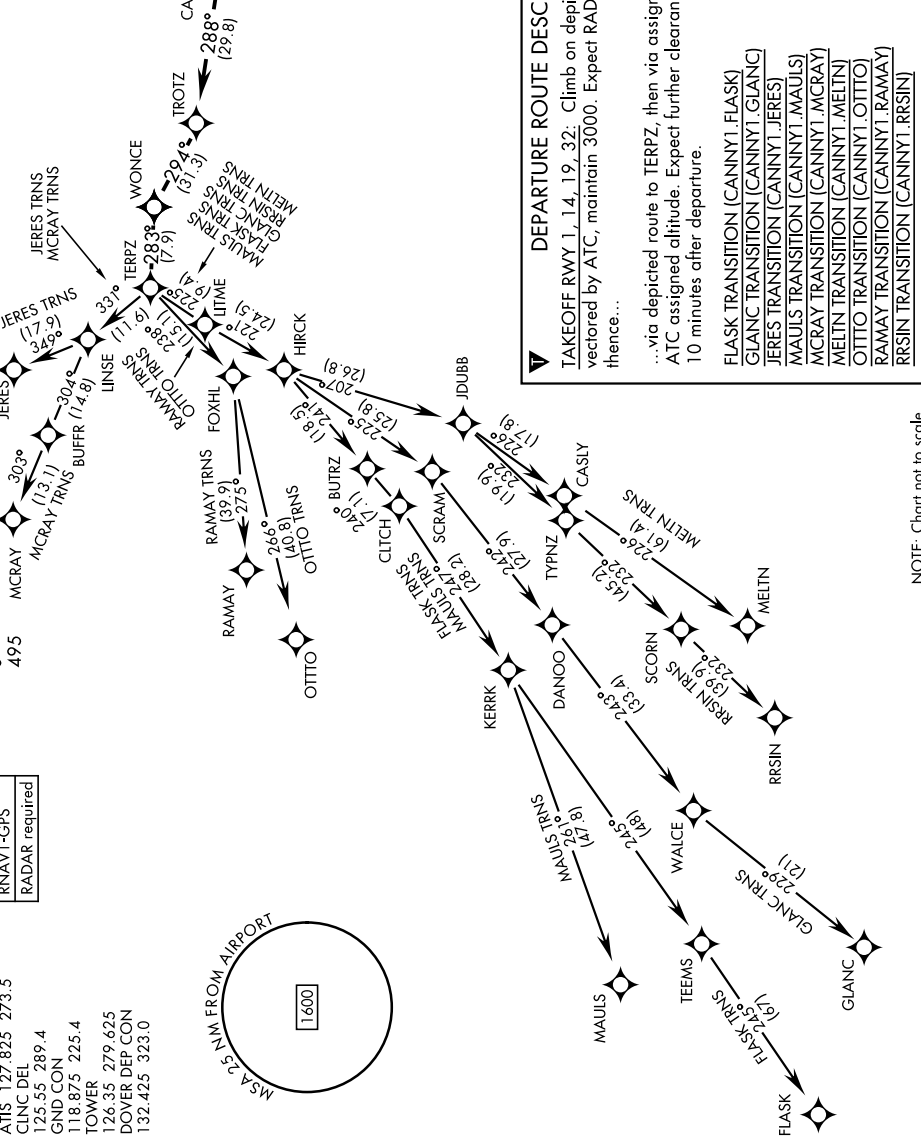
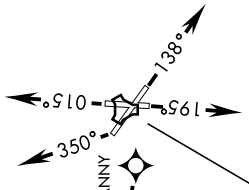


CANNY ONE DEPARTURE (RNAV)(CANNY1.CNY)

[USAF]

TOP ALTITUDE
3000



RNAV1-GPS
RADAR required

ATIS 127.825 273.5
CLNC DEL 125.55 289.4
GND CON 118.875 225.4
TOWER 126.35 279.625
DOVER DEP CON 132.425 323.0

MSA 2.5 NM FROM AIRPORT
1600

DEPARTURE ROUTE DESCRIPTION

TAKEOFF RWY 1, 14, 19, 32: Climb on depicted heading until vectored by ATC, maintain 3000. Expect RADAR vectors to CANNY, thence...

...via depicted route to TERPZ, then via assigned transition. Maintain ATC assigned altitude. Expect further clearance to filed altitude within 10 minutes after departure.

- FLASK TRANSITION (CANNY1.FLASK)
- GLANC TRANSITION (CANNY1.GLANC)
- JERES TRANSITION (CANNY1.JERES)
- MAULS TRANSITION (CANNY1.MAULS)
- MCRAY TRANSITION (CANNY1.MCRAY)
- MELTN TRANSITION (CANNY1.MELTN)
- OTTTO TRANSITION (CANNY1.OTTTO)
- RAMAY TRANSITION (CANNY1.RAMAY)
- RRSIN TRANSITION (CANNY1.RRSIN)

NOTE: Chart not to scale

NE-3, 14 MAY 2026 to 11 JUN 2026

NE-3, 14 MAY 2026 to 11 JUN 2026

CANNY ONE DEPARTURE (RNAV)(CANNY1.CNY)

Amtd 3 11JUL24