

DOVER, DELAWARE

# ILS RWY 1 (CAT II)

DOVER AFB (KDOV)

LOC I-DOV <b>109.95</b>	APCH CRS <b>015°</b>	Rwy Idg TDZE Arprt Elev <b>9602</b> <b>25</b> <b>29</b>
----------------------------	-------------------------	--

[USAF]

RNAV1-GPS or RADAR required for procedure entry.

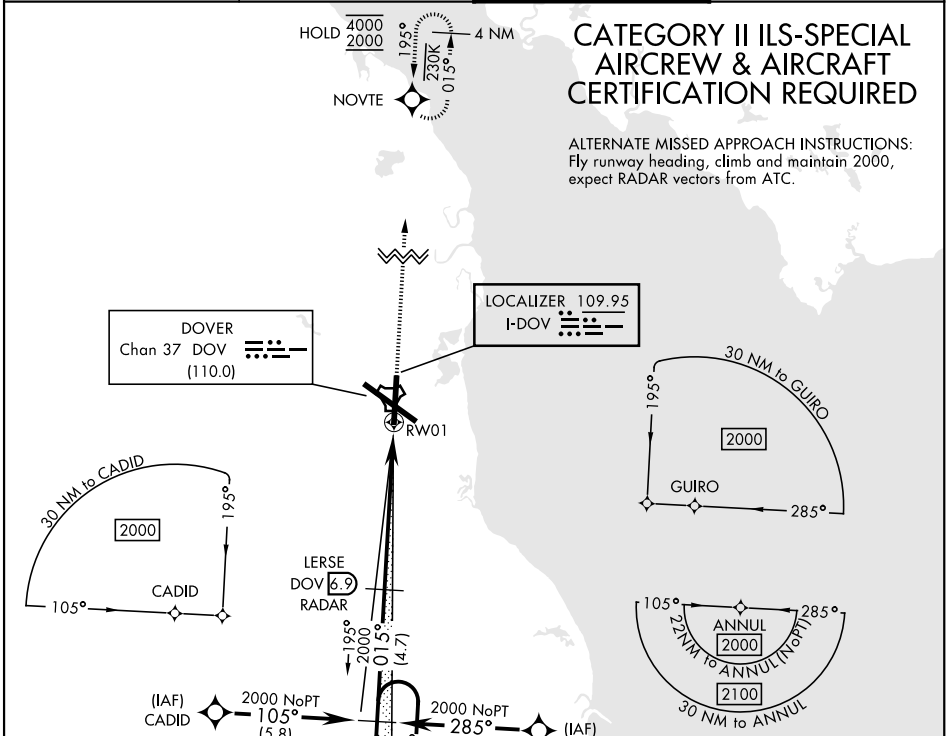


MISSED APPROACH: Climb to 2000 direct NOVTE and hold.

ATIS <b>127.825 273.5</b>	APP CON <b>132.425 257.875</b>	TOWER <b>126.35 279.625</b>	GND CON <b>118.875 225.4</b>
------------------------------	-----------------------------------	--------------------------------	---------------------------------

## CATEGORY II ILS-SPECIAL AIRCREW & AIRCRAFT CERTIFICATION REQUIRED

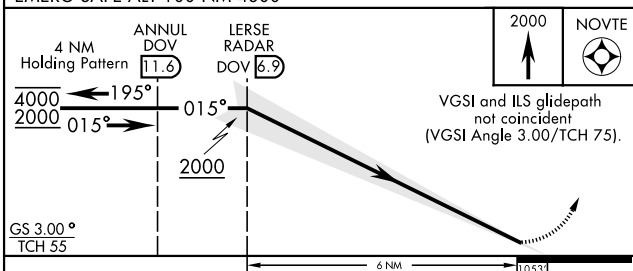
ALTERNATE MISSED APPROACH INSTRUCTIONS: Fly runway heading, climb and maintain 2000, expect RADAR vectors from ATC.



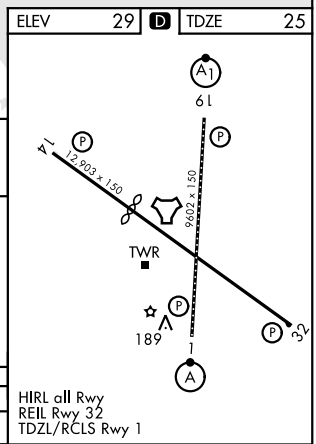
NE-3, 14 MAY 2026 to 11 JUN 2026

NE-3, 14 MAY 2026 to 11 JUN 2026

ELEV 29	TDZE 25
---------	---------



CATEGORY	A	B	C	D	E
S-ILS 1		RA 98/12	100	DA 125	



HIRL all Rwy  
REIL Rwy 32  
TDZL/RCLS Rwy 1

DOVER, DELAWARE

39°08'N-75°28'W

DOVER AFB (KDOV)

Amdt 1 26DEC24

# ILS RWY 1 (CAT II)