

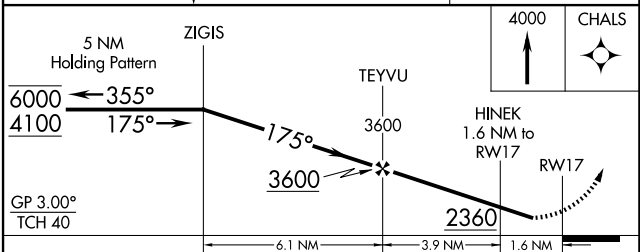
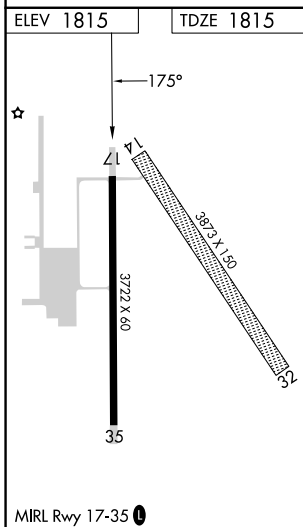
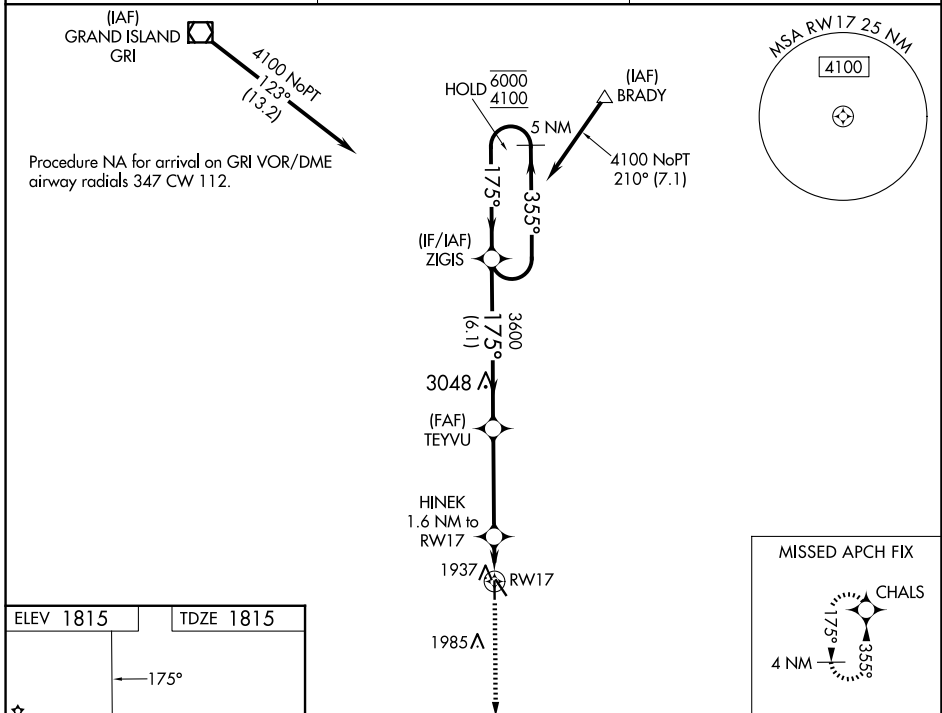
WAAS CH <b>99631</b> <b>W17A</b>	APP CRS <b>175°</b>	Rwy Idg TDZE Apt Elev	<b>3722</b> <b>1815</b> <b>1815</b>
--	------------------------	-----------------------------	---

# RNAV (GPS) RWY 17

HARVARD STATE (Ø8K)

RNP APCH - GPS.	<p>MISSED APPROACH: Climb to 4000 direct CHALS and hold.</p>
<p>▼ Rwy 17 helicopter visibility reduction below ¼ SM NA. Baro-VNAV NA. ▲ NA Use AUH altimeter setting; when not received, use GRI altimeter setting; increase LPV DA to 2121 feet and LNAV/VNAV DA to 2136 feet; increase all MDAs 20 feet.</p>	

AUH AWOS-3 <b>121.225</b>	MINNEAPOLIS CENTER <b>119.4 278.8</b>	CTAF <b>122.90</b>
------------------------------	--	-----------------------



CATEGORY	A	B	C	D
LPV DA	2102-1	287 (300-1)		NA
LNAV/VNAV DA	2117-1	302 (400-1)		NA
LNAV MDA	2280-1	465 (500-1)		NA

NC-2, 14 MAY 2026 to 11 JUN 2026

NC-2, 14 MAY 2026 to 11 JUN 2026