

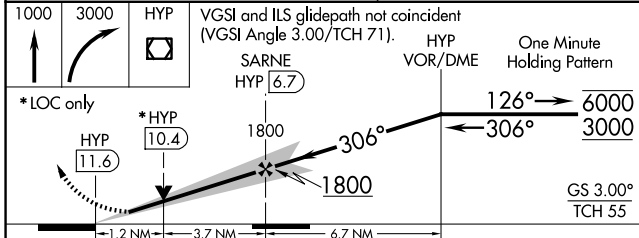
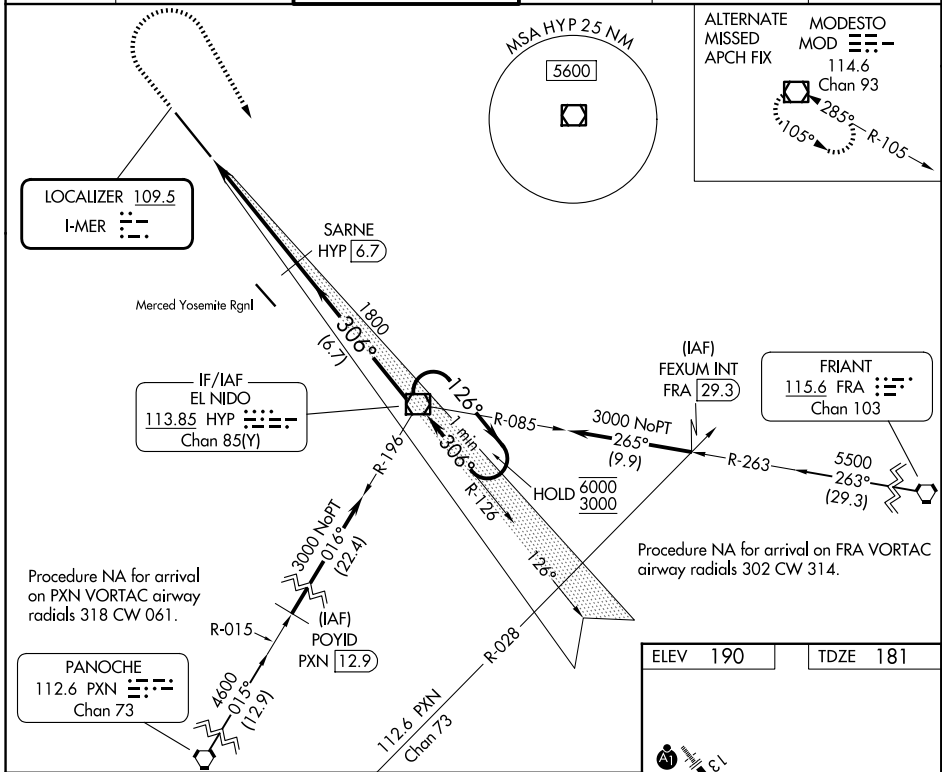
LOC I-MER <b>109.5</b>	APP CRS <b>306°</b>	Rwy Ldg <b>11802</b> TDZE <b>181</b> Apt Elev <b>190</b>
---------------------------	------------------------	--

# ILS or LOC RWY 31

CASTLE (MER)

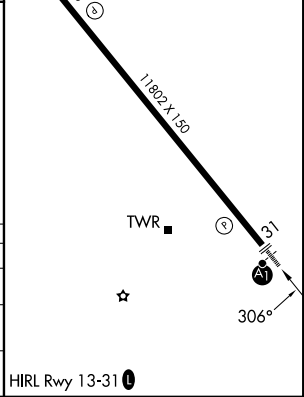
DME required for LOC only.	ALSF-1 	MISSED APPROACH: Climb to 1000 then climbing right turn to 3000 direct HYP VOR/DME and hold.
Circling NA southwest of Rwy 13-31. DME from HYP VOR/DME.		
Simultaneous reception of I-MER and HYP DME required.		

ATIS <b>124.475</b>	NORCAL APP CON <b>120.95 269.45</b>	CASTLE TOWER * <b>118.175 (CTAF) 235.775</b>	GND CON <b>133.575</b>	UNICOM <b>122.95</b>	<b>123.0</b>
------------------------	--	---	---------------------------	-------------------------	--------------



ELEV <b>190</b>	TDZE <b>181</b>
-----------------	-----------------

CATEGORY	A	B	C	D
S-ILS 31	381-½		200 (200-½)	
S-LOC 31	620-½ 439 (500-½)		620-¾ 439 (500-¾)	
CIRCLING	660-1 470 (500-1)		720-1½ 800-2 530 (600-1½) 610 (700-2)	



SW-2, 14 MAY 2026 to 11 JUN 2026

SW-2, 14 MAY 2026 to 11 JUN 2026