

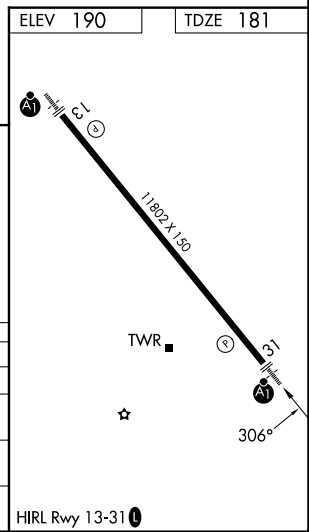
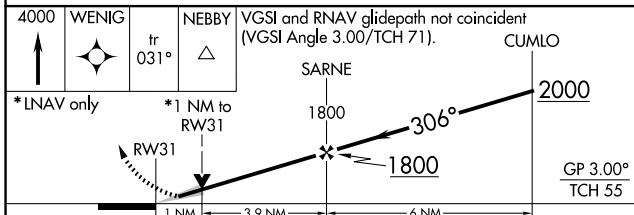
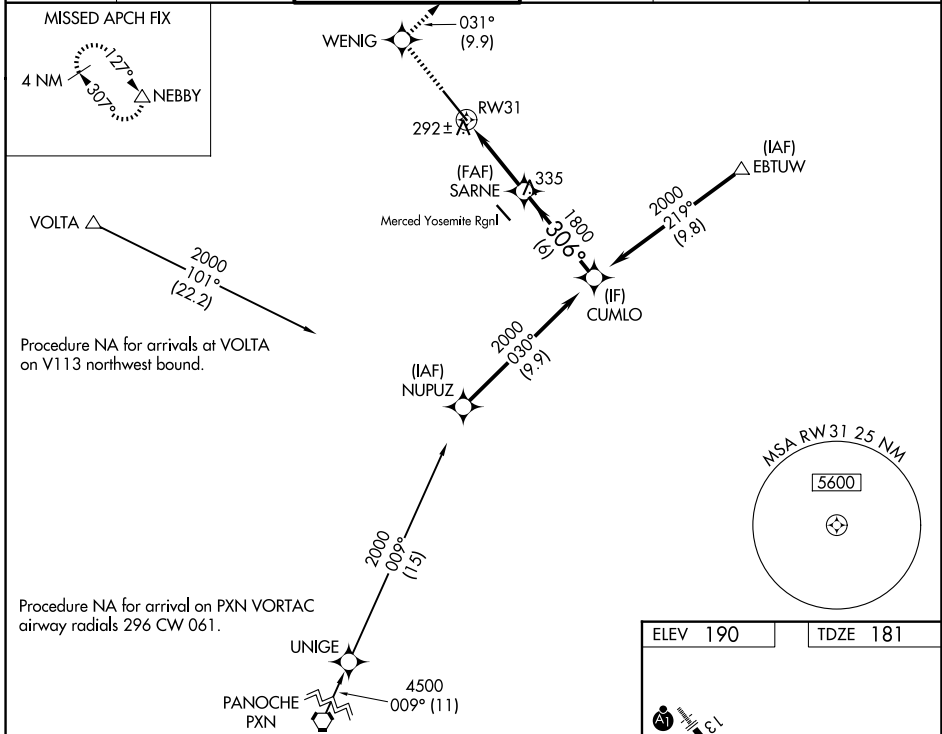
WAAS CH 87110 W31A	APP CRS 306°	Rwy Ldg 11802 TDZE 181 Apt Elev 190
--	------------------------	--

RNAV (GPS) RWY 31

CASTLE (MER)

RNP APCH.	ALSF-1 	MISSED APPROACH: Climb to 4000 direct WENIG and on track 031° to NEBBY and hold, continue climb-in-hold to 4000.
<p>▼ Circling NA southwest of Rwy 13-31. For uncompensated Baro-VNAV systems, LNAV/VNAV NA below -15°C or above 54°C. For inoperative ALS, increase LNAV/VNAV all Cats visibility to ½ SM and LNAV Cats C/D visibility to 1 SM.</p>		

ATIS 124.475	NORCAL APP CON 120.95 269.45	CASTLE TOWER ★ 118.175 (CTAF) 235.775	GND CON 133.575	UNICOM 122.95	123.0
------------------------	--	---	---------------------------	-------------------------	--------------



CATEGORY	A	B	C	D
LPV DA		381-½	200 (200-½)	
LNAV/VNAV DA		498-½	317 (400-½)	
LNAV MDA	560-½	379 (400-½)	560-⅝	379 (400-⅝)
CIRCLING	660-1	470 (500-1)	720-1½ 530 (600-1½)	800-2 610 (700-2)

SW-2, 14 MAY 2026 to 11 JUN 2026

SW-2, 14 MAY 2026 to 11 JUN 2026