


LOC I-HFE 111.7	APP CRS 281°	Rwy Ldg 10102 TDZE 1174 Apt Elev 1203
---------------------------	------------------------	--

ILS RWY 28R (SA CAT I & II)

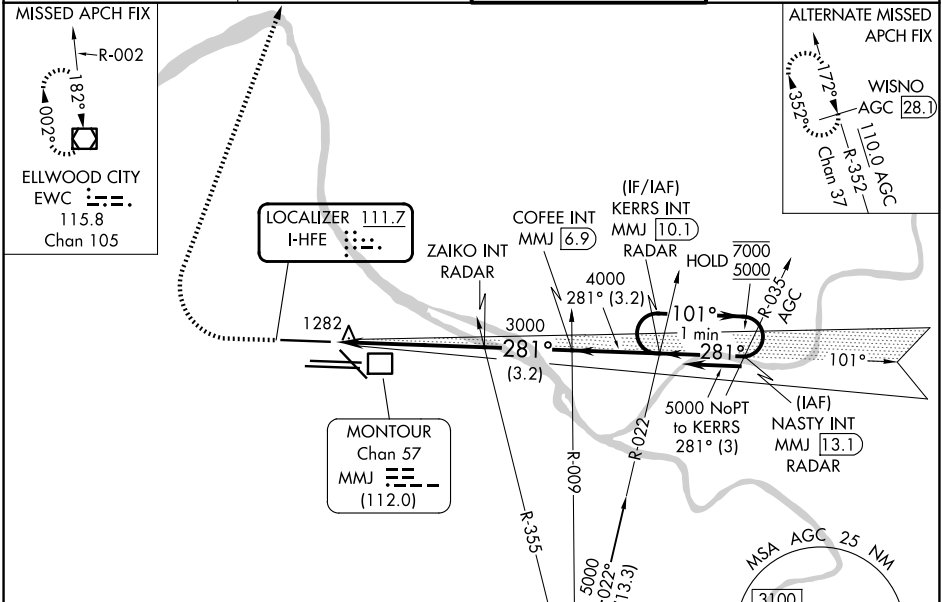
PITTSBURGH INTL (PIT)

From NASTY: Radar required for procedure entry.

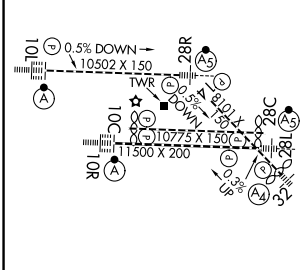
Simultaneous approach authorized. DME from MMJ DME. Simultaneous reception of I-HFE and MMJ DME required. SA CAT I: Requires specific OPSPEC, MSPEC, or LOA approval and use of HUD to DH. SA CAT II: Reduced lighting: requires specific OPSPEC, MSPEC, or LOA approval and use of autoland or HUD to touchdown.

MALSR  MISSED APPROACH: Climb to 1800 then climbing right turn to 5000 direct EWVC VOR/DME and hold.

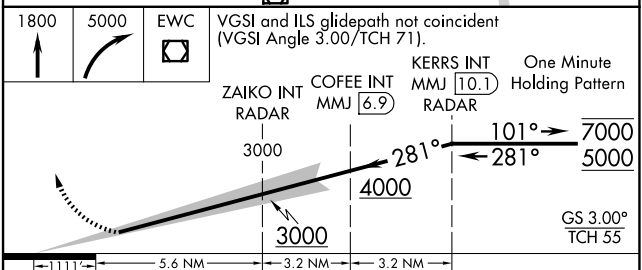
D-ATIS 127.25	PITTSBURGH APP CON 123.95 360.8	PITTSBURGH TOWER 128.3 291.7	GND CON SOUTH 121.9 348.6 NORTH 127.8 348.6
-------------------------	---	--	---



ELEV 1203	D	TDZE 1174
------------------	----------	------------------



REIL Rwy 10C HIRL all rwy's TDZL/RCLS Rwy's 10L, 10R, 28L, 28R, 28C, and 32



CATEGORY	A	B	C	D
S-ILS 28R	SA CAT I RA 192/14 150 DA 1324			
S-ILS 28R	SA CAT II RA 116/12 100 DA 1274			

SA CATEGORY I & II ILS - SPECIAL AIRCREW & AIRCRAFT CERTIFICATION REQUIRED

NE-4, 14 MAY 2026 to 11 JUN 2026

NE-4, 14 MAY 2026 to 11 JUN 2026