

LOC I-HFE 111.7	APP CRS 281°	Rwy Ldg 10102 TDZE 1174 Apt Elev 1203
---------------------------	------------------------	--

ILS or LOC RWY 28R

PITTSBURGH INTL (PIT)

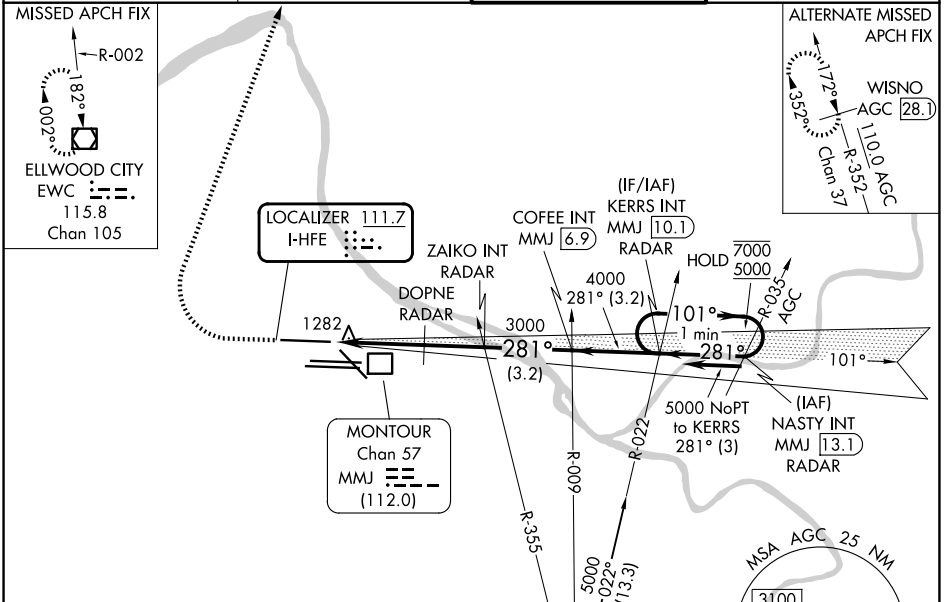
From NASTY: RADAR required for procedure entry.
RADAR required for LOC only.

Simultaneous approach authorized. For inop ALS, increase S-ILS 28R Cat E visibility to RVR 4000 and S-LOC 28R Cats C/D/E visibility to RVR 5500. DME from MMJ DME. Simultaneous reception of I-HFE and MMJ DME required.

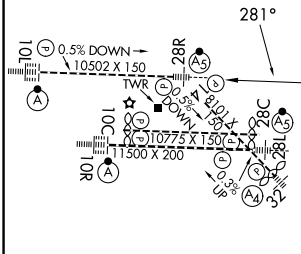


MISSED APPROACH: Climb to 1800 then climbing right turn to 5000 direct EWVC VOR/DME and hold.

D-ATIS 127.25	PITTSBURGH APP CON 123.95 360.8	PITTSBURGH TOWER 128.3 291.7	GND CON SOUTH 121.9 348.6 NORTH 127.8 348.6
-------------------------	---	--	---



ELEV 1203	D	TDZE 1174
-----------	----------	-----------



1800 5000 EWVC

VGSI and ILS glidepath not coincident (VGSI Angle 3.00/TCH 71).

KERRS INT MMJ 10.1 One Minute Holding Pattern

*LOC only.

ZAICO INT RADAR

COFFEE INT MMJ 6.9

DOPNE RADAR

3000 4000 7000 5000

101° 281°

GS 3.00° TCH 55

REIL Rwy 10C HIRL all rws TDZL/RCLS Rws 10L, 10R, 28L, 28R, 28C, and 32	FAF to MAP 5.6 NM					
Knots Min:Sec	60 5:36	90 3:44	120 2:48	150 2:14	180 1:52	
CATEGORY	A	B	C	D	E	
S-ILS 28R	1374/18 200 (200-½)					
S-LOC 28R	1540/24	366 (400-½)	1540/35	366 (400-¾)		
CIRCLING	1700-1	497 (500-1)	1880-2 677 (700-2)	1880-2¼ 677 (700-2¼)	1880-2½ 677 (700-2½)	

NE-4, 14 MAY 2026 to 11 JUN 2026

NE-4, 14 MAY 2026 to 11 JUN 2026